



*Division of Collins Mfg. Co.*

*Quality & Quick Salon Equipment*  
*JeffcoSalonEquipment.com • 800-951-8294*

## Table of Contents

Bowls & Accessories	4 – 5
Dryers & Accelerators	6 – 7
In-Stock Salon Seating	8 – 13
Barbering Equipment	14 – 15
Made-to-Order Salon Seating	16 – 19
Trolleys/Carts & Mats	20 – 21
Java Cabinetry	22 – 25
Elite Cabinetry	26 – 27
School Equipment	28 – 29
Special Order Laminates	30
Special Order Vinyls	31

*All Jeffco made-to-order seating & cabinetry is manufactured in the USA!*



*A Division of Collins Manufacturing Company*

## About Jeffco

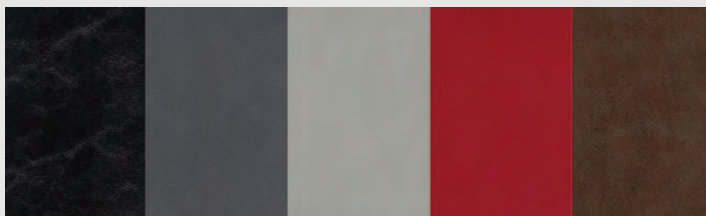
Jeffco Salon Equipment was established in 1965 by Red Harrison in Advance, NC. Collins Manufacturing Company purchased Jeffco in 2010 and it operates as a wholly-owned subsidiary of Collins.

In business since 1983, Collins Manufacturing Company is one of America's leading manufacturers of salon and barber equipment and furnishings. Headquartered in Cookeville, TN, Collins owns and operates a complete manufacturing and warehouse facility with over 132,000 square feet.

Collins and Jeffco have outside sales offices and independent distributors that represent the companies throughout the United States, Canada, and the Caribbean. Call Jeffco at 800-951-8294 or Collins at 800-292-6450.

## Vinyl Upholstery Selections

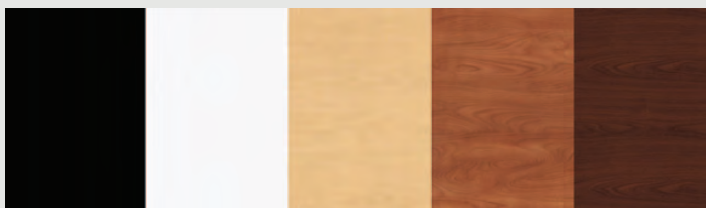
Jeffco Quick Salon Seating is made-to-order in Wallaby Black, Wallaby Charcoal, Wallaby Grey, Wallaby Scarlet, & Wallaby Chocolate (shown L-R). Upholstery can also be special ordered in over 100 additional colors, found on page 31. Special orders incur extra time and cost.



## Cabinetry Laminate Selections

Jeffco Java and Elite cabinetry is made-to-order in five matte finish laminate selections: Black, White, Fusion Maple, Wild Cherry, and Cocoa Maple (shown L-R). The inside of all cabinetry is black. All Jeffco cabinets feature high pressure, laminated exterior surfaces, unless noted otherwise. Unless specified, all electric is by customer. All electrical and plumbing should be done by a licensed professional.

Java and Elite cabinetry can also be special ordered in over 40 additional colors, found on page 30. Special orders incur extra time and cost.



*Printed color swatches are rarely 100% accurate.*

*Contact your distributor or Jeffco for an actual sample when absolute color match is necessary.*



### *Inquiries and Orders*

Inquiries are best answered by your Jeffco distributor, but Jeffco customer service also stands ready to answer questions and provide additional information as needed. Call 800.951.8294 toll-free. Orders are best placed by your Jeffco distributor; all pertinent information such as item numbers, descriptions, quantities, colors, optional features, shipping instructions, addresses, phone numbers, and email addresses should be known and specified at the time of order placement.

### *Order Acknowledgements*

Order acknowledgments are promptly emailed or faxed to the distributor; it is the distributor's responsibility to review the order and insure accuracy regarding items, product descriptions, quantities, and colors. The acknowledgement will indicate the planned or scheduled shipping date. While Jeffco makes every effort to maintain the scheduled date, it cannot be guaranteed. Jeffco assumes no liability for damages should an order be late.

### *Terms of Sale*

While prices are subject to change from time to time, the unit prices billed to the distributor will be those that were in effect when the order was placed. Payment terms are specified on the sales order and subsequent invoice; payment within terms is required. All Jeffco prices are F.O.B. the factory. All sales are final.

### *Color Selections*

Jeffco seating is manufactured in Wallaby Black, Wallaby Charcoal, Wallaby Grey, Wallaby Chocolate, and Wallaby Scarlet upholstery. Jeffco cabinetry is manufactured in the following matte colors: Black, White, Cocoa Maple, Wild Cherry, and Fusion Maple. Custom colors are available and can be special-ordered. Special orders take longer and cost 25% more. Imported items are available only as depicted.

### *Shipping and Handling*

Jeffco salon equipment is packaged for safe shipment directly to the distributor or salon. Some orders are shipped via private carrier, but most orders are shipped via UPS or common carrier truck line, F.O.B. our factory. While freight damage is not a frequent occurrence, no shipment is immune to the risk of loss or damage. It is the sole responsibility of the consignee to inspect the shipment for damage upon receipt and *clearly note any damage on the delivering carrier's bill of lading*. Freight carriers have very limited responsibility for damage that is not promptly reported or noted on the bill of lading; failure to note damage on the bill of lading adversely affects any subsequent claims that may be filed.

### *Installation*

Jeffco equipment is designed for easy assembly and installation. The typically needed fasteners and instructions are included, but Jeffco also recommends that all plumbing and electrical work be done by reputable and licensed professionals who are familiar with the local building codes.

## *Contact Information*

Jeffco Salon Equipment, LLC  
2000 Bowser Road • PO Box 2279  
Cookeville, TN 38506/2

P 800.951.8294 • F 931.528.8074  
[www.JeffcoSalonEquipment.com](http://www.JeffcoSalonEquipment.com)



Jeffco is located near the epicenter of the US population, which translates into less-than-average shipping costs & quicker-than-average transit times from the factory to your salon.

## *Jeffco Product Warranties*

*Jeffco salon equipment is guaranteed against defects in material or workmanship as follows:*

*Shampoo Bowls:* Jeffco bowls & faucets are warranted for 2 years from date of shipment. All other components are warranted for 1 year from date of shipment.

*Hair Dryers & Processors:* Jeffco's Apollo Dryer and Collins' SolAir Dryer are warranted for 2 years from date of shipment from factory. All other dryers, processors, and steamers are warranted for 1 year.

*Hydraulic Bases:* Jeffco's T & T5 Hydraulic Bases are warranted for 5 years from date of shipment. Jeffco's G Base, in-stock All Purpose chair bases, & Barber chair bases are warranted for 2 years from date of shipment.

*Salon Chairs:* Jeffco's chair upholstery & components are warranted for 1 year from date of shipment.

*Salon Cabinetry:* Jeffco's salon cabinetry is warranted for 1 year from date of shipment.

*Customer Returns:* In some cases, Jeffco may elect or require that a product be returned to the factory. In such case, Jeffco will issue a Return Authorization (RA) Number which must be clearly marked on the carton. Unauthorized customer returns will be refused & returned to the sender.

*The guarantees above apply only to the original purchaser & do not apply to damage caused by water or fire, discoloration, fading, or staining of fabrics or laminates, or where there is evidence of improper plumbing or installation, tampering, mishandling, abuse, or misuse of the equipment. The company recommends that all plumbing & electrical work be done by reputable & licensed professionals who are familiar with local codes.*

**Jeffco will provide warranty repair parts to the customer, including shipping, at no charge. Alternatively, if the customer prefers to pay the shipping costs, the Jeffco Service Center will perform warranty repairs, providing both parts and labor at no charge.**



Jeffco Headquarters & Factory  
Cookeville, TN

## Shampoo Bowls



### 8700 Porcelain Tilting Bowl

**8700-570-VB-W White • 8700-570-VB Black**

The 8700 Porcelain tilting backwash bowl tilts 6" with a reliable tilt mechanism, and includes 570 faucet, shampoo hose, hair strainer, drain assembly, flexible tail stock, and vacuum breaker. UPC certified. Complies w/ ASME A112.19.12 & CSA B45.1. 21"W x 24"D x 11"H



All porcelain bowls are available in black & white

### 8200 Porcelain Tilting Bowl

**8200-570-VB-W White • 8200-570-VB Black**

The 8200 Porcelain tilting shampoo bowl is good for sidewash or backwash setups and tilts 6". The 8200 Bowl includes a reliable tilt mechanism, 570 faucet, shampoo hose, hair strainer, drain assembly, flexible tail stock, and vacuum breaker. UPC certified. Complies w/ ASME A112.19.12 & CSA B45.1. 23.5"W x 21.5"D x 9"H



Just 22" front to back. Perfect for stylists with a shorter reach!

### 8100 Porcelain Sidewash Bowl

**8100-570-VB-W White • 8100-570-VB Black**

The 8100 Heart-shaped porcelain sidewash bowl comes with a 570 faucet, shampoo hose, vacuum breaker, drain assembly, hair strainer, and mounting bracket. Bowl does not tilt. UPC certified. Complies w/ ASME A112.19.12 & CSA B45.1. 23"W x 20"D x 10"H



### 8600 Porcelain Tilting Bowl

**8600-570-VB-W White • 8600-570-VB Black**

Includes 570 single-handle faucet, spray hose, vacuum breaker, drain assembly, hair strainer, and flexible tail-stock. Reliable tilt mechanism that lets bowl tilt a full 6". UPC certified. Complies w/ ASME A112.19.12 & CSA B45.1. 20"W x 22"D x 11"H

### 8000 Porcelain Sidewash Bowl

**8000-570-VB-W White • 8000-570-VB Black**

The 8000 square porcelain sidewash bowl comes w/ 570 faucet, shampoo hose, vacuum breaker, drain assembly, hair strainer, & mounting bracket. Bowl does not tilt. UPC certified. Complies w/ ASME A112.19.12 and CSA B45.1. 19"W x 20"D x 10"H



All Jeffco bowls are UPC certified



## ABS Plastic Bowls



### 8300 Standard ABS Bowl

**8300-570** – The industry-standard 8300 ABS bowl comes w/ mounting bracket, 570 faucet, shampoo hose, hair strainer, drain assembly, and tail stock. 388-ASC vacuum breaker is ordered separately. The 8300 can optionally be equipped w/ the two-handle 555 faucet. UPC certified, compliant w/ CSA B45.5 and IAPMO Z124. 19" x 20" x 9.75"



### 8400 Standard ABS Bowl

**8400-570** – The durable 8400 ABS bowl comes complete w/ mounting bracket, 570 faucet, shampoo hose, hair strainer, drain assembly, & tail stock. 388-ASC vacuum breaker ordered separately. UPC certified. Compliant w/ CSA B45.5 and IAPMO Z124. 19" x 19.5" x 9.75"



### 8900 Large Oval ABS Bowl

**8900-570** – The oversized 8900 ABS plastic bowl comes w/ mounting bracket, 570 faucet, shampoo hose, hair strainer, drain assembly, & tail stock. Can be equipped w/ 388-ASC vacuum breaker, ordered separately. UPC certified. Complies w/ CSA B45.5 and IAPMO Z124. 23" x 20.5" x 9"





### 570 Metal Faucet

**570** – Features 24" flexible supply lines and a ceramic cartridge. Meets ASME A112.18.1 & CSA B125.1. UPC & UPC Canada approved. Fits most bowls, not just Jeffco bowls.



### 532 Metal Faucet

**532** – Features 14" flexible stainless steel supply lines and a ceramic cartridge. Meets ASME A112.18.1 & CSA B125.1. UPC & UPC Canada approved. Fits most bowls. Order 532-BVD to fit cast-iron bowls.



### 555 Metal Dual Handle Faucet

**555** – This chrome two handle faucet fits the Jeffco 8300 Bowl and other bowls with 4" centers. Meets ASME A112.18.1M. Handicap rated. 3 3/8" center fit available as a special order.



### 552 Acrylic Faucet

**552** – Features acrylic knob, 8" flexible stainless steel supply lines and a ceramic cartridge. Meets\* ASME A112.18.1 & CSA B125.1. UPC & UPC Canada approved. Fits most bowls, not just Jeffco bowls.



*Two Year Warranty on all Jeffco bowls and faucets!*

### 800 Faucet

**800** – Premium Faucet with built-in spray hose and vacuum breaker.



### 400 Diverter

**400** – Diverter spout diverts water from the shampoo spray hose to the faucet.



### 6600NR Neck Rest

**6600NR** – Adapts to practically any shape bowl and reduces neck fatigue and complaints.



### 572 Drain Assy.

**572** – Strainer Basket Assembly with gaskets, premium locking nut, tail-stock, and hair strainer. Fits 3 1/2" diameter hole.



### 561 Shampoo Hose

**561** – Jeffco spray hose, 48"L. Flexible PVC hose delivers a concentrated needle-point, non-splash spray, unaffected by soap solutions or dyes. Fits Jeffco & most bowls. Black only.



### 662S Drain Assy.

**662S** – Strainer basket assembly for tilting bowls. Heavy-duty construction, premium gaskets, center tightening bolt that clamps bowl, metal hair strainer, & metal tail stock. Fits 3 1/2" diameter hole.



### 20129 Flex Drain Hose

**20129** – Flexible drain hose has smooth interior for efficient flow, great flex for long life, and durability for hot & cold applications. 18" length.



### 388-ASC Vacuum Breaker

**388** – Anti-Siphon Vacuum Breaker for Jeffco Bowls, also fits most brands. Chrome-body vacuum breaker, gasket, brass nipples, and 20" connecting hose. Meets\* ASSE 1001 & CSA B64.1.1; IAPMO listed.



### 388-VB Vacuum Breaker Complete

**388-VB** – Vacuum Breaker package includes anti-siphon vacuum breaker device, brass nipples & jam-nuts, 20" connecting hose, hose receiver plate, keeper, & gaskets. Fits Jeffco 8100, 8200, 8300 & 8700 bowls, and most other brands. Meets\* ASSE 1001 & CSA B64.1.1; IAPMO listed.



### HT-1 Hair Trap

**HT1** – The Quick-Clean Hair Trap is the perfect alternative to the conventional P-Trap. Easily installed, easily cleaned



### 1701 Hair Trap

**1701** – This universal hair trap prevents hair from clogging the shampoo bowl drain and has clean-out. Meets IGC 167-2011ae2, ASME A112.18.2 and CSA B125.2.

### 563 Hose Receiver Plate

**563** – Hose Receiver Plate with gasket & retainer. Fits Jeffco & most shampoo bowls. Accommodates any shampoo hose & most vacuum breakers.



*\*Items listed by vendor.*



## K500 Apollo Dryer

**K500** - Professional Dryer with easy-to-use digital time and temperature settings, reliable temperature control, maintain temperatures up to 150°F, auto-cool cycle, and oversized smoked hood. Measures 12 1/2" x 7" x 24" high. 110 volts, 1400 watts, 13 amps. ETL approved for US and Canada. TWO Year Warranty.



## 2200 SolAir Dryer

**2200 SolAir Ionic Dryer** by Collins

Professional Dryer with *Negative Ion Technology* yielding improved results (see inset). Features easy-to-use digital time and temperature settings, reliable temperature control, maintains temps up to 150°F, auto-cool cycle, and oversized smoked hood. Measures 12 1/2" x 7" x 24" high. 110 volts, 1400 watts, 13 amps. ETL approved.



## Ionic Technology

Collins SolAir dryer with ionic technology generates millions of negative ions, which neutralize positive ions and break down the water molecule. In turn, this process reduces the amount of time to dry hair, seals the hair cuticle, reduces frizziness, and leaves hair shinier.



## 440 EKO Dryer Chair

**EKO Dryer Chair** – Economical box-style dryer chair, stocked in Black but can be ordered in your choice of Grey, Chocolate, Charcoal or Scarlet. Available with or without the K500 Apollo dryer. 21" wide between arms.

**440.2.0 Dryer Chair without dryer**  
**440.2.D Dryer Chair with K500 dryer**



## Wheel & Handle Kit

**WA-300** – Wheel and Handle Kit includes a chrome plated handle for back of dryer cabinet, chrome plated legs, quiet rubber wheels, and all fasteners. Installs easily! WA-300 kit fits SolAir, Apollo, and Highland Dryers.

## Dryer Warranty Info

Collins SolAir motors and hoods are guaranteed for five years. All other components of the SolAir and all components of the Jeffco Apollo dryer are guaranteed for a period of two years from date of purchase.

*This guarantee applies only to the original purchaser and all claims must be made through the authorized distributor from whom the equipment was purchased. These warranties cover replacement-repair parts, not labor, and they do not cover normal wear and tear or damage caused by water or fire, staining, fading, or discoloration of fabrics, laminates, or finishes, or where there is evidence of tampering, mishandling, abuse, or misuse of the equipment.*



## Dryers & Accelerators

310 San Fran Premium Trolley  
In-stock and ready to ship!  
See page 21 for details.



*All Jeffco dryers and processors ship in just a couple days!*



4476S

### 4476 Halo Accelerators

The 360 degree rotary motion of the halo-shaped heat source provides an evenly applied radiant heat and yields a quicker, more even processing of color and perms. The Halo Accelerator also has an adjustable heating zone with fan for the neckline. 110 volts, 1300 watts, 12 amps.

**4476S Portable Dryer with Wheels** – Easily adjusted up and down, easily moved. One Year Warranty.

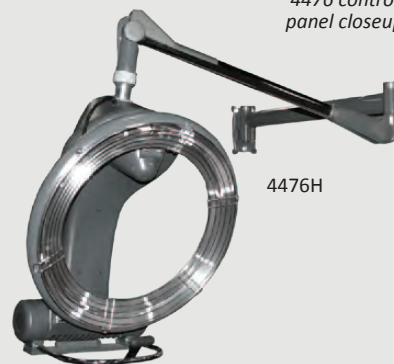
**4476H Wall-Mounted Hood Dryer** – The articulating arm permits Halo to range almost 3 ft. right or 3 ft. left of the center mounting, as well as up and down. Installs 6–6.5 ft. above finished floor. One Year Warranty.



4476 control panel closeup



Halo shown rotating



4476H



2238H



2238S



2238 control panel closeup

### 2238 Climate Control Dryers

Each 2238 dryer has a 60 minute timer, variable heat settings, 1000 watt heating capacity, & 110 volts. **Jeffco advises hair nets be worn when using this device.**

**2238S Portable Dryer with Wheels** – Easily adjusted up and down, easily moved. One Year Warranty.

**2238H Wall-Mounted Hood Dryer** – The articulating arm permits dryer to range almost 3 ft. right or 3 ft. left of the center mounting, as well as up and down. Installs 6 ft. above finished floor. One Year Warranty.

### 2109S Jeffco Steamer

**2109S** – Jeffco's steamer lifts the hair cuticle, allowing the product to penetrate deeply and quickly, and permitting shorter processing times.

Virtually no maintenance! Just fill the water tank with distilled water. Light weight and portable, the 2109S features a water runoff container, 60 minute timer, and hood with 45° adjustment. One Year Warranty.



2109S



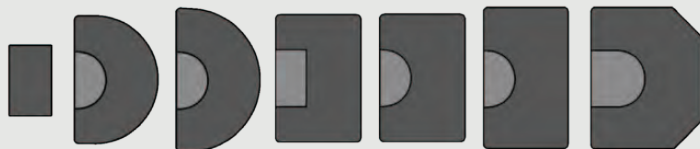
3079.0.G  
Katie Styler



*Katie Styler*

**3079.0.G** – Elegant cupped back cushion, reflective chrome sweeping arms, premium upholstery, and tubular-steel footrest. Standard on the G base; not available on the T5 star base. 19" between the arms, 17.5" high back. Available in Black only.

*Each ComfortZone mat is warranted to the original purchaser for FIVE years from the original date of shipment from the factory. See page 20 for details.*



7009.0.G  
Mezzo Styler



*Mezzo Styler*

**7009.0.G** – Extremely comfortable sculpted cushions, premium upholstery, padded armrests on polished chrome arms, and a V-bar rubber footrest. Available on the G, T, or T5 star base. 19.5" between arms, 17" high back. Available in Black only.



## *In-Stock Seating*



*268 Tram – Economical  
& ships in just a couple  
days! See page 20.*



*New in-stock stools!  
See page 13*



7106.0.G  
Lorenzo Styler

### *Lorenzo Styler*

**7106.0.G** – Encompassing seat back, premium upholstery, durable metal arms with black rubber inserts, and a T-Bar footrest. Available on the G, T, or T5 star base. 19.5" between the arms, 15" high back. Available in Black only.



*Jeffco G Bases  
come with a  
2 Year Warranty!*

### *New EKO Styler*

**7219.0.G** – Durable curved urethane arms, T-bar footrest, and premium upholstery with a window pane design. Available on the G, T, or T5 star base. 20" between the arms, 16" high back. Available in Black only.



7219.0.G  
New Eko Styler

## In-Stock Seating

### Veranna Styler

**7030.0.G** – Simplicity with tubular-steel arms, premium upholstery, V-bar footrest, tubular-steel seat back bracket. Available on the G, T, or T5 star base. 20" between the arms. Black only.



7030.0.G  
Veranna Styling Chair



Jeffco G Bases  
come with a  
2 Year Warranty!



All in-stock seating ships  
in just a couple days!



New in-stock stools!  
See page 13



**1109** – Booster Seat with  
Protective Skirt. Available  
in Black only.

See page 12  
for Raleigh  
AP chair  
information.



3633.0.G  
Raleigh Styler

### Raleigh Styler

**3633.0.G** – Premium upholstery, durable urethane arms, tubular-steel footrest. Standard on the G base; not available on the T5 star base. 19.75" between the arms, 17" high back. Available in Black only. Also available is the matching Raleigh All Purpose chair, see page 12.



*Pizzazz Styler*

**7122.0.G** – Add Pizzazz to your salon! The Pizzazz Styling Chair features premium quilted upholstery, a T-bar footrest, and premium chrome-plated polished-steel arms. The G base is standard, but Pizzazz also looks great on the optional T5 Star base. 20" between the arms, 17" high back. Available in Black only.



7122.0.G  
Pizzazz Styler

*Jazz Styler*

**3101.0.G** – Premium upholstery, padded-upholstered arms, tubular-steel footrest, clearance between cushions to prevent trapping hair. Standard on the G base; not available on the T5 star base. 19.5" between the arms, 17" high back. Available in Black only.

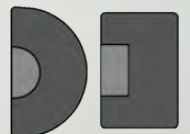


3101.0.G  
Jazz Styler



*These in stock items ship within just a couple days!*

Apollo Dryer • ComfortZone Mats • Wall-Mount Dryer • In-Stock Stools  
In-Stock Styling & Barber Chairs • Porcelain & ABS Shampoo Bowls  
Shampoo Accessories • San Fran Trolley



## In-Stock Seating



6366.1.G  
All Purpose



### Raleigh All Purpose

**6366.1.G** – Gas cylinder controlled reclining back, adjustable-removable headrest, premium upholstery, durable urethane arms. Chrome control lever for back recline is located on the right side of the chair, as pictured. Standard on the G base; not available on the T5 star base. Measures 19.75" between the arms, 17.5"H back. Headrest raises 10". Black only.



Jeffco G, AP, & Barber  
Bases come with a 2  
Year Warranty!

310 San Fran Premium  
Trolley – Ships in just a  
couple days!  
See page 21 for details.



30512.1.DG –  
Nu All Purpose Chair



### Nu All Purpose

**30512.1.DG** – Gas-cylinder controlled reclining back w/ dual-sided controls, retractable headrest, premium upholstery, urethane arms, 4" diameter hydraulic lift. Available only on the AP base, as shown. 20" between the arms, 18" high back, headrest raises 6". Available in Black only.





6017.1.AP  
Hickory AP



### *Hickory II AP*

**6017.1.AP** – The Hickory II All Purpose chair with loop footrest has a gas cylinder controlled reclining back with dual-sided controls, adjustable-removeable headrest, premium upholstery, and urethane arms. Available only on the AP base, as shown. 19.5" between the arms, 17.5" high back. Large 9" tall head rest can be removed or can be extended an additional 7" if needed. Black only.

*All in-stock seating ships in just a couple days!*



### *J98 Stool*

**J98** – Ergo-molded seat with back, pneumatic height adjustment, die-cast aluminum base, premium casters. Seat adjusts from 18" - 24" from floor. Black only.



### *J83 Stool*

**J83** – Comfortable seat with lumbar-support back, pneumatic height adjustment, die-cast aluminum base, premium casters. Seat adjusts from 18" - 24" from floor. Black only.



### *4800 Shampoo Chair*

**4800** – This classic shampoo chair smoothly reclines and offers an outstanding value. Black only. Measures 19.5" between arms, 16.5"H back.



### *J25 Stool*

**J25** – Contoured seat cushion with pneumatic height adjustment, die-cast aluminum base, premium casters. Seat adjusts from 18" - 24" from floor. Black only.



## Mediterranean Barber Station

**1224** – Long an industry standard, the full-featured Mediterranean Barber Station includes a built-in shampoo bowl, behind-the-bowl bottle well, two full-extension drawers, two storage cabinets, two quad-electrical outlets, and two plumbing access doors. Measures 60"W x 26.5"D x 77.5"H as pictured.



## Yukon Barber Chair

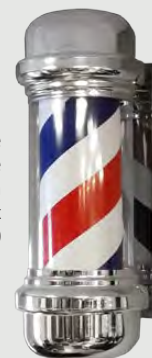
**362** – Economical barber chair with premium upholstery, contemporary urethane arms, gas cylinder controlled reclining back, adjustable headrest, fixed-position platform footrest, and durable chrome AP base. Recline lever on right, as shown. Measures 20.5" between the arms, 19" high back. Available only on the barbering base, as shown.



Barber Chair Bases  
are Warranted  
for 2 Years!

## Barber Pole

**P148** – A classic barber pole with a durable plastic cover. Power switch allows for pole movement and light independent of each other. Plexiglass measures 9" diameter x 16" high. Overall 22"H x 12"W x 12"D. 110 volts. Recommended for indoor use.



## 109EX Barber Chair

**109EX** – Extra-wide 22 1/2" between the arms, 18"H back cushion. Chair total height is 38". Recline lever on right, as shown. Reclining back, adjustable integral headrest for shaves, kick-out leg rest for comfort, chrome plated hydraulic base for longevity. Available only on the Barbering base, as shown. Black only.







*707 Jaguar Barber Chair*

**707.B / 707.R** – The Jeffco Jaguar is a full-featured barber chair that promises to be the industry's best value in barbering. Each Jaguar features all-metal frame, arms, footrest, and base with a bright polished finish, gas-cylinder controlled reclining back, adjustable-removable headrest, kick-out footrest, and roll-over calf pad for shaves. The Jaguar arms and kick-out footrest work in-sync with the reclining back; recline lever on right as shown. Two year warranty on the hydraulic base and gas-cylinder. Measures 20" between the arms, 17" high back cushion, plus 4" headrest. Available for immediate shipment in Red (707.R) or Black (707.B) as pictured.



*Barber Chair Bases  
are Warranted  
for 2 Years!*



*Don't Forget...*



**1109** – Booster Seat with Protective Skirt. Available in Black only.

*Barber Shop Waiting Chairs*



**1050 Winston Waiting Chair**  
Contemporary waiting chair with stylish, flared armrests. Padded seat & back. Black frame only. 19.75"W between arms, 19"H seat to floor. 22.5"W x 32.5"H x 17.5"D

**1042 Classic Reception Sofa**  
Contemporary styling plus expert upholstery & heavily padded cushions make this chair a premium addition to any barber shop. 24"W x 27"D x 35"H



## Quick Seating • Made-to-Order



### 619 Cella

Unique "7" style urethane arms, short back and heavily padded cushions. Very popular Jeffco chair model. 22" between the arms, 15" high back.



619.3.L – Lever-Control Shampoo Chair w/ Gas Lift

Jeffco Made-to-Order Shampoo Chairs are equipped with a gas cylinder to adjust the seat height so as to more comfortably accommodate your clients.

All Shampoo Shuttles are available as a Backwash or Add-On Sidewash. See next page for details.



619.0.G Styling Chair



619.1.G – All Purpose Chair

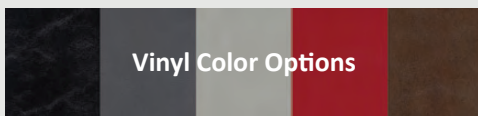


619.2.0 – Dryer Chair Only

619.2.D – Dryer Chair w/ K500



619.8700 – Shampoo Shuttle w/ 8700 Tilting Porcelain Bowl



Jeffco seating is made-to-order in Wallaby's Black, Charcoal, Grey, Scarlet, and Chocolate.



611.3.L – Lever-Control Shampoo Chair w/ Gas Lift



611.4.0 – Task Chair w/ Casters & Gas Lift

### 611 Bravo

Clean, square design with durable urethane arms. 22" between the arms, 15" high back.



Jeffco G Bases come with a 2 Year Warranty!



611.0.G Styling Chair



611.1.G All Purpose Chair



611.8700 – Shampoo Shuttle w/ 8700 Tilting Porcelain Bowl



611.2.0 – Dryer Chair Only

611.2.D – Dryer Chair w/ K500





604.1.G  
All Purpose Chair



604.3.L – Lever-Control  
Shampoo Chair w/ Gas Lift



604.2.0 – Dryer Chair Only

604.2.D – Dryer Chair w/ K500

*604 Contour*  
Appealing, conventional style. Loop  
armrests & rounded corners.  
21" between the arms, 15" high back.



604.8700 – Shampoo Shuttle  
w/ 8700 Tilting Porcelain Bowl



604.0.G  
Styling Chair

*All Made-to-Order  
Chairs are available on  
G, G-Lo, T, & T5 Bases.*



### *Add-On Shuttles*

**Every Jeffco Backwash shuttle is also available as an Add-On shuttle!** Jeffco Add-On Shuttles enable an easy upgrade to the shampoo area. Using existing plumbing, replace the old sidewash bowl with an Add-On Shuttle.

Each Add-On model comes with an 8200 round porcelain tilting bowl, pivoting back cushion for lumbar support, and a seat cushion with 6" front-to-back travel. Bowl available in black or white, chair top available in Black, Charcoal, Grey, Chocolate, or Scarlet, chassis in black only.

*Specify Add-On or Backwash Shuttle when ordering.*



8200 Porcelain Tilting Bowl,  
available in white or black



660.3.L – Lever-Control  
Shampoo Chair w/ Gas Lift



660.1.G – All Purpose Chair



660.2.0 – Dryer Chair Only

660.2.D – Dryer Chair w/ K500



660.8700 – Shampoo Shuttle  
w/ 8700 Tilting Porcelain Bowl

### *660 Grande*

Comfortable, durable and wide.  
22" between arms, 15" high back.



660.0.G  
Styling Chair

## 606 Aero

Classic styling, urethane-capped steel arms, and thick cushions lend to the supreme comfort and durability of the Aero. 22" between arms, 15" high back.



606.0.G – Styling Chair



606.8700 – Shampoo Shuttle  
w/ 8700 Tilting Porcelain Bowl



606.2.0 – Dryer Chair Only

606.2.D – Dryer Chair w/ K500



606.3.L – Lever-Control  
Shampoo Chair w/ Gas Lift



606.1.G  
All Purpose Chair

### Vinyl Color Options

Jeffco seating is made-to-order in Wallabys Black, Charcoal, Grey, Scarlet, and Chocolate.

Jeffco G Bases  
come with a  
2 Year Warranty!



## 616 Sterling<sup>II</sup>

A best seller in Jeffco's Made-to-Order lineup! The Sterling<sup>II</sup> features contemporary style, urethane arms, durable and thick cushions, and lasting quality. 21.5" between arms, 14.5" high back.



616.0.G  
Styling Chair



616.2.0 – Dryer Chair Only  
616.2.D – Dryer Chair w/ K500



616.8700 – Shampoo Shuttle  
w/ 8700 Tilting Porcelain Bowl



616.1.G – All Purpose Chair



616.3.L – Lever-Control  
Shampoo Chair w/ Gas Lift



## 618 Parker

Waterfall seat cushion design, open-ended urethane arms, timeless style. 22" between arms, 15" high back.



618.0.G  
Styling Chair



618.8700 – Shampoo Shuttle  
w/ 8700 Tilting Porcelain Bowl



618.2.0 – Dryer Chair Only

618.2.D – Dryer Chair w/ K500



618.3.L – Lever-Control  
Shampoo Chair w/ Gas Lift



618.1.G – All Purpose Chair

All Made-to-Order Chairs are  
available on G, G-Lo, T, & T5 Bases.

## 681 Regent

Classic design with urethane arms and expert stitch detailing in the back cushion. 22" between arms, 14" high back.



681.0.G  
Styling Chair



681.4.0 – Task Chair  
w/ Casters & Gas Lift



681.2.0 – Dryer Chair Only

681.2.D – Dryer Chair w/ K500

K500 Apollo Dryer  
See page 6 for more  
information.



apollo

## Seating Accessories



Chair Back Covers  
Select style when ordering



10130  
Reclining Mechanism



20221  
T-Bar Footrest



G  
Standard G Base



G-Lo  
LoDraulic G Base



T5  
T-Star Base



T  
Extended Warranty

## In-Stock Comfort Zone Mats



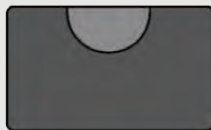
**HR3654**  
36" x 54" x 3/4"



**RT3654**  
36" x 54" x 3/4"



**HR3660**  
36" x 60" x 3/4"



**RT3660**  
36" x 60" x 3/4"



**XL4860**  
Over-Sized 48" x 60" x 3/4"

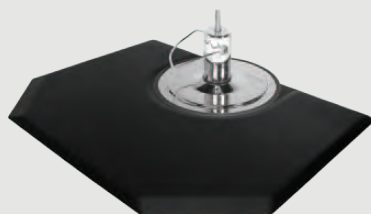


**SQ3654**  
For Square Base  
36" x 54" x 3/4"



**HR3660**

Comfort Zone Mats are warranted to the original purchaser for five (5) years from the original date of shipment from the factory. Mats are guaranteed against wear-through of the top-elastomer & separation of top-elastomer surface from the urethane core.



**XL4860**



**RT1830**  
Shampoo Salon Mat  
18" x 30" x 3/4"



**RT3660**



**SQ3654**

### Comfort Zone Benefits

- Reduces Stress & Strain on Back, Knees & Feet
- Reduces Fatigue & Fatigue-Related Errors
- Provides Preventive Anti-Pain Therapy
- Recommended by Professionals
- Time-tested design, Made in North America
  - Durable, Stable, Puncture-Resistant
  - Guaranteed Not to Delaminate
  - Guaranteed Not to Wear Through
  - Molded Design Prevents Edge Curl
  - High Heels Will Not Puncture



### 268 Tram Trolley

**268** – This economical yet durable Trolley features a tubular steel frame, oversized premium casters, five removeable trays, two side-mounted pockets, and one side-mounted cup. Black only. Measures 13.5"W x 14.5"D x 40"H



### Don't Forget...



**1109** – Booster Seat w/ Protective Skirt. Black only.



## Organizer & Trolley



### Organizer Collection

The Organizer Collection gives you all the flexibility you need to equip the dispensary or color area of your salon. Base cabinets with stainless steel bar sinks, base cabinets with drawers & storage, upper storage cabinets, and upper color cubbies.

Mix & Match them to meet your specific needs and fit your space:  
32" wide • 48" wide • 64" wide • 80" wide • 96" wide

*Pictured configuration is 112"W x 21"D x 84"H and shown in Fusion Maple and (custom color) Graphite Nebula.*

3373-32	Organizer 32" Sink Cabinet	32"W x 21"D x 36"H
3373-48	Organizer 48" Sink Cabinet	48"W x 21"D x 36"H
3374-32	Organizer 32" Base Cabinet	32"W x 21"D x 36"H
3374-48	Organizer 48" Base Cabinet	48"W x 21"D x 36"H
3375-32	Organizer 32" Upper Storage	32"W x 12"D x 30"H
3375-48	Organizer 48" Upper Storage	48"W x 12"D x 30"H
3376-32	Organizer 32" Color Cubbies	32"W x 10"D x 30"H
3376-48	Organizer 48" Color Cubbies	48"W x 8"D x 30"H
3377-32	Organizer 32" Backsplash	32"W x 18"H
3377-48	Organizer 48" Backsplash	48"W x 18"H
3370-20	Organizer Salon-Spa Cart	20"W x 15"D x 34"H
3371-18	Organizer Portable Cabinet	18"W x 18"D x 36"H



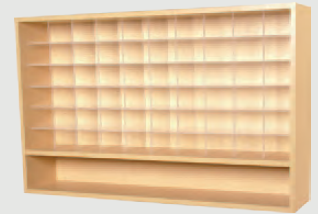
3370-20



3371-18



3376-32



3376-48



3375-32



3375-48



3374-48



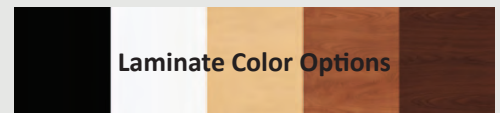
3374-32



3373-32



3373-48



**Laminate Color Options**

*Java & Elite cabinetry is made-to-order in Mattes Black, White, Fusion Maple, Wild Cherry, & Cocoa Maple.*



### 310 San Fran Trolley

**310** – This popular trolley-cart features a locking cabinet which secures 5 removable drawers (each 3.25"D x 13"L x 8.5"W). Side ledges can go up or down & accomodate two color bowl or hair dryer holders, two curling iron holders, as well as extra ledge space. Removable hot top hangs securely on back of cart when not in use. Bottom shelf under cabinet. Clear, easy-rolling rubber wheels. Black only. 34.75"H x 16"D x 12"W (21"W with side ledges extended).

## Java Cabinetry Made-to-Order



### Java Formula Station

**J10** – Fabulous formula for a styling station – finished with an oversized fascia, 24"W x 48"H mirror, and ledge with satin metal hardware. Right side features a drawer, an angled tool panel with holders for blow dryer, flat iron, and curling irons, plus a product area. Left side has six cubbies for storage. 30"W x 12"D x 76"H plus the 30" x 8" ledge.



### Java Space Saver Island

**J12** – The J12 Space-Saver B2B provides each Stylist with a full-extension drawer, an angled tool panel with holders for blow dryer, flat iron, and curling irons, two shelves, and below-the-tools storage. Chase for electrical is provided. Overall 30"W x 16.5"D x 76"H, plus the two 30" x 8" ledges.



### Java Island Station

**J11** – This back-to-back is two Formula stations joined together with a top-to-bottom wiring chase. Each side has a full-extension drawer, angled tool panel with holders for blow dryer, flat iron, and curling irons, plus loads of storage. Includes two 24"W x 48"H mirrors. 30"W x 24"D x 76"H plus the two 30" x 8" ledges.



### Java Tower Station

**J09** – Features a full-extension drawer, storage cabinet with adjustable shelf, plus a convenient angled tool panel. Includes work area above drawer and an upper storage cabinet with shelf. 15"W x 16"D x 78.5"H plus 5"W tool panel.

*Pictured J05 wall-mounted mirror ordered separately.*

### Java Retail Vanity

**J08** – Features a full-extension drawer, storage cabinet w/ adjustable shelf, convenient angled tool panel with holders for blow dryer and two curling irons. Upper retail display features adjustable glass shelves. 15"W x 15"D x 75"H plus 5" wide angled tool panel. *Pictured J05 wall-mounted mirror and ledge ordered separately.*



619.0.G – Cella Styling Chair, pg 16



616.0.G – Sterling Styling Chair, pg 18



### Java ADA Reception Desk

**J60** – Features 24" wide customer check writing ledge plus an ADA accessible customer surface, drawer, recess for keyboard, and chair well lower shelf for a computer. 42"W x 24"D x 42"H



*Java Wall Stations*



**J01 – Wall Station**

Two full-extension drawers & angled tool panel w/ holders for blow dryer & 2 curling irons. 29"W x 15"D x 7"H plus 5" tool panel.  
30" x 48" mirror ordered separately



**J02 – Wall Station**

36" wide work surface, full-extension drawer, and holders for blow dryer and two curling irons. 36"W x 16"D x 7"H  
36" x 36" mirror ordered separately



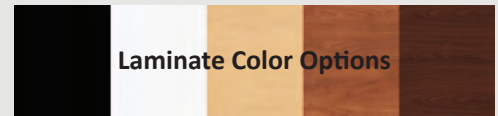
**J03 – Wall Station**

Two full-extension drawers and a 48" wide work surface with holders for blow dryer and two curling irons. 48"W x 16"D x 7"H  
36" x 48" mirror ordered separately



*Java Mirror & Ledge*

**J05 – 24" x 48" mirror with 2"W all-around reveal, plus 28"W x 8"D ledge with satin finished shelf hardware. Black unless specified otherwise.**



**Laminate Color Options**

*Java & Elite cabinetry is made-to-order in Mattes Black, White, Fusion Maple, Wild Cherry, & Cocoa Maple.*

*Java Styling Vanity*

**J07 – Full-extension drawer, storage cabinet with shelf, angled tool panel with holders for blow dryer and two curling irons. 15"W x 15"D x 36"H plus a 5" wide tool panel.**



*Java Portable*

**J06 – Same features as the J07 styling vanity, plus a finished back and premium locking casters. 15"W x 15"D x 36"H, plus a 5" wide tool panel.**



*Java Multi-Cultural Unit*

**J14 – Features holders for seven Marcel tools, one hot comb, blow dryer, & curling iron. Unit also has drawer, storage cabinet with shelf, oversized work-surface, and heat-resistant ceramic tile for hot irons. 21"W x 16"D x 36"H, + 5"W tool panel.**



**1050 Winston Waiting Chair**

Contemporary waiting chair w/ stylish, flared armrests, padded seat & back. Black frame only. 19.75"W between arms. 22.5"W x 32.5"H x 17.5"D

**1042 Classic Reception Sofa**  
Contemporary styling with expert upholstery & heavily padded cushions. 24"W x 27"D x 35"H



**Vinyl Color Options**

*Jeffco seating is made-to-order in Wallabys Black, Charcoal, Grey, Scarlet, and Chocolate.*



*All Jeffco hydraulic bases come with a 2 Year Warranty!*

## Java Cabinetry Made-to-Order



### Java Shampoo Bulkhead

**J30** – Strong bulkhead for any bowl, full-width ledge, tip-out door for clean towels, tip-out soiled towel bin, and an upper storage cabinet with three hinged doors. Measures 45"W x 10"D x 75"H. Pictured 8300 Bowl ordered separately.

### Java Wet Station

**J22** – Bottle well behind the bowl for shampoo & conditioners, lift-lid over the bowl, 2 full-extension drawers, 2 storage cabinets with adjustable shelves, and a convenient tool panel with holders for a blow dryer and 2 curling irons. 59"W x 16"D x 39"H including the angled tool panel. Pictured 8900 ABS bowl & wall-mounted 36" x 54" mirror ordered separately.



606.1.G – Aero AP Chair, pg 18



### Java DLX Shampoo

**J34** – Features right side cabinet with tilt-down top door for clean towel storage, tilt-down bottom door with bin for soiled-towels, & doors below the bowl for plumbing access and storage. Made to accommodate Jeffco 8900 shampoo bowl. 45"W x 16"D x 39"H. Vacuum Breaker ordered separately.

**J34** – Cabinet Only  
**J34.8900** – Java DLX Shampoo w/ 8900 ABS Bowl



### Java Add-On Tilting Bowl Shampoo

**J37** – Plumbed from the back, and with an access door on the front, the J37 can convert most bulkheads to a tilting bowl setup. Choice of 8200, 8600, or 8700 bowl in either black or white.

**J37** – Cabinet Only  
**J37.8200** – Cabinet with 8200 Bowl  
**J37.8600** – Cabinet with 8600 Bowl  
**J37.8700** – Cabinet with 8700 Bowl



### J39 Backwash Shampoo

**J39** – Backwash Pedestal with fully-equipped tilting porcelain bowl. This 16"W x 16"D x 24"H pedestal includes a protective molded plastic deck and plumbing access door.

**J39** – Cabinet Only  
**J39.8600** – Cabinet w/ 8600 Bowl  
**J39.8700** – Cabinet w/ 8700 Bowl



### Java Shampoo

**J33** – Smaller version of the J34, featuring doors below the bowl for plumbing access and storage. Made to accommodate Jeffco 8900 shampoo bowl. 30"W x 16"D x 39"H. Vacuum Breaker ordered separately.

**J33** – Cabinet Only  
**J33.8900** – Java Shampoo with 8900 ABS Bowl

### Java Econo Shampoo

**J32** – For limited budgets, this economical shampoo cabinet is the answer! Overall dimensions are 24"W x 15"D x 36"H, unit features two plumbing access doors below sink. Made to accommodate 8300-570 Bowl. Black Melamine construction. Vacuum Breaker ordered separately.

**J32** – Cabinet Only  
**J32.8300** – Cabinet w/ 8300 Bowl



### Java Petite Wet Station

**J20** – Concealed bottle well and lift-lid over bowl, full-extension drawer, storage cabinet with adj. shelf, angled tool panel with holders for a blow dryer and 2 curling irons. 39"W x 16"D x 39"H + 5"W angled tool panel. 8400 bowl and 36" x 36" mirror ordered separately.





*Manicure  
Table Lamp*

**10468** – Swing arm manicure lamp, attaches quickly and easily to any manicure table. Black only.



*Cameo Nail Table*

**3344-42** – 42" wide nail table with one drawer and storage cabinet with adjustable shelf on the right side. Black lamp, locking casters, and padded upholstered rest are included. 42"W x 18"D x 30"H



*Java 42 Nail Table*

**J42** – 42" wide table with a drawer & storage cabinet on the right side. Black lamp, locking casters, & padded upholstered rest are included. 42"W x 16"D x 30"H x 36"H



*Java Retail Display*

**J64** – Completely finished on all sides, this retail display features three adjustable, high-strength, tempered glass shelves. 30"W x 16"D x 75"H

*Made-to-Order Stools*



**611.6.O**

The Bravo Manicure Stool offers clean lines with a classic design. 15"H back.



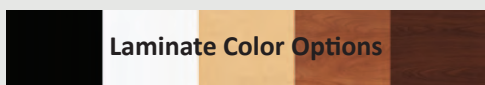
**604.6.O**

The Contour Manicure Stool has an appealing & lasting style. 14"H back.



**2501**

The Chable is a multi-purpose task chair. See page 29.



**Laminate Color Options**

Java & Elite cabinetry is made-to-order in Mattes Black, White, Fusion Maple, Wild Cherry, & Cocoa Maple.

*Add-On Shampoo Shuttles*

Jeffco Add-On Shuttles enable an easy upgrade to the shampoo area. Using existing plumbing, replace your old sidewash shampoo bowl with an Add-On Shuttle.

Each Add-On model comes with an 8200 round porcelain tilting bowl, pivoting back cushion for lumbar support, and a seat cushion with 6" front-to-back travel. Bowl available in black or white, chassis available in black only, chair top available in Black, Charcoal, Grey, Scarlet, or Chocolate.

Every Jeffco Backwash shuttle is also available as an Add-On shuttle. Specify when ordering.



8200 Porcelain Tilting Bowls



*Java Barber Station*

**J24** – Choose from the standard 8300 Bowl or (pictured) 8900 Oval Bowl as the built-in bowl. Includes 2 full-extension drawers, 2 storage cabinets with adjustable shelves, lower storage & side-mounted tool panel with holders for a blow dryer & 2 sets of clippers, or blow dryer & two curling irons. Includes 570 fixtures. 65"W x 16"D x 39"H. Wall-Mounted 36" x 60" Mirror & Vacuum Breaker ordered separately.

**J24.8900** – Java Barber with 8900 Bowl

**J24.8300** – Java Barber with 8300 Bowl



# Elite Cabinetry Made-to-Order



## Elite Mirror & Ledge

**E07** – Includes 30"W x 10"D wall-mounted ledge, over-mirror accent, and a large 30" x 48" x 1/4" mirror.



Elite Vanity  
Tip-out Tool Panel



## Elite Styling Vanity

**E04** – Features beautiful accent moldings, 2 drawers, breadboard pull-out, tip-out tool panel, six-outlet power strip, holders for blow dryer, clippers, and curling irons. 19" W x 16"D x 42"H



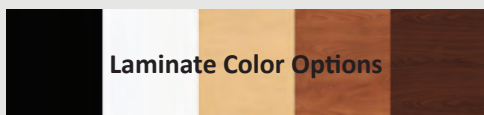
681.0.G – Regent  
Styling Chair, pg 19



604.0.G – Contour  
Styling Chair, pg 17

## Elite Tower Station

**E05** – Features a fully-equipped styling vanity with beautiful accent moldings, two drawers, breadboard pull-out, six-outlet power strip, & tip-out tool panel with holders for blow dryer, clippers, & curling irons. An attached full-height upper storage cabinet with two doors and two adjustable shelves sits atop the vanity. 19"W x 16"D x 82"H  
Pictured E07 wall-mounted mirror shown, ordered separately.



Laminate Color Options

Java & Elite cabinetry is made-to-order in Mattes Black, White, Fusion Maple, Wild Cherry, & Cocoa Maple.



## Elite Portable Vanity

**E06** – Same features as the E04 Elite styling vanity (above), plus a finished back & premium locking casters. 18"W x 16"D x 41"H



## Elite Island Station

**E10** – The Elite B2B Tower Island features two fully-equipped E05 Tall-Tower Styling Stations for TWO stylists, complete with tip-out tool panels and pull-out bread boards. Also includes companion center ledge, beautiful accent moldings, concealed mirror frame, & two 30"W x 48"H mirrors. 66"W x 16"D x 82"H



## Elite Reception Desk

**E01/E02** – Elite Reception Desk w/ beautiful accent moldings. Features include locking cash drawer, cash till, two storage cabinets, 10" deep pull-out ADA customer ledge. Your choice of pencil drawer (E01) or pull-out keyboard tray (E02), specify at time of order. 62"W x 24"D x 42"H



## Elite Retail Display

**E03** – Features beautiful accent moldings, 3 adjustable, high-strength, tempered glass shelves over a 24" high storage cabinet with two doors. 31.5"W x 16"D x 85.5"H





### *Elite Wet Station*

**E11** – Features beautiful accent moldings, four drawers, two breadboards, six-outlet power strip, tip-out tool panel with holders for blow dryer, clippers, and curling irons. Unit also includes concealed bottle well, lift-lid over bowl, and tip-out soiled towel bin with 13 quart molded plastic bin. Pictured 8300 bowl and 36" x 60" mirror are both ordered separately. 61.5"W x 16"D x 42"H

### *Elite SideWash Shampoo*

**E12** – Features beautiful accent moldings, overhead towel storage, fully-laminated 3/4" thick sliding doors in aluminum track, 16" high backsplash, tip-out soiled towel bin and 13 quart molded plastic bin. Pictured 8300-552 shampoo bowl ordered separately. 43.25"W x 12"D x 73"H



*Tip-Out  
Soiled  
Towel Bin*



606.1.G – Aero  
AP Chair, pg 18



618.1.G – Parker  
AP Chair, pg 19

### *Elite Color Center*

**E14** – Features beautiful accent moldings, a stainless steel sink with paddle-handle fixtures, overhead storage with sliding doors in aluminum door track, acrylic color storage cubbies, two utility drawers, two storage cabinets with adjustable shelves, and a spring-hinged access door to the soiled towel bin. 49.5"W x 22"D x 81"H



**611.6.O** – The Bravo manicure stool offers clean lines with a classic design. 15"H back.



### *Elite Manicure Table*

**E15** – Features drawer, storage cabinet with adjustable shelf, black lamp, padded rest, and locking casters. 48"W x 20"D x 30"H

### *Jeffco Accessories*



*3" Chrome  
Wire Pull*  
Standard on all Jeffco  
cabinetry, except Elite.

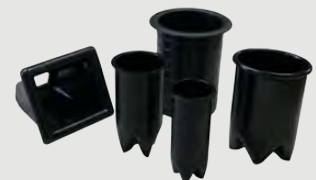


*Elite Rope Pull*  
Standard on Jeffco Elite  
Cabinetry.

### *Mirrors*

Jeffco keeps the following 1/4" mirrors in stock for shipment along with cabinetry orders:

24" x 48"	30" x 42"
30" x 48"	36" x 36"
36" x 42"	36" x 48"
36" x 54"	36" x 60"
36" x 66"	36" x 66"



### *Tool Holders*

- 10132 • 3" Blow Dryer Holder
- 11912 • 1.5" Curling Iron Holder
- 11913 • 2" Curling Iron Holder
- 10730 • Clipper Pocket
- 11510 • Flat Iron Holder

# Made-to-Order School Equipment



## Patty G Station

**86451.2** – This space-efficient back-to-back student station features a durable powder-coated steel frame. Each student has a 24" x 48" mirror, full-extension drawer, holders for Barbicide jar, blow dryer and 2 curling irons, quad-electric, and convenient hooks that can be used for customer purse, student kit, clippers, and more. 34"W x 27 1/2"D x 84"H.

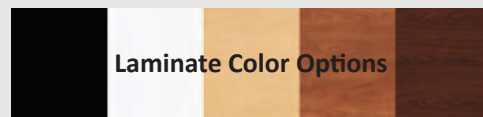


## Lehigh Island

**54511.4** – Back-to-Back School Station with tool holders for clippers, blow dryer & curling irons. Each student has a duplex electric outlet, storage shelf, and framed mirror that doubles as mannequin storage. Measures 48"W x 33"D x 36"H x 86"H.



New in-stock stools!  
See page 13



Laminate Color Options

Java & Elite cabinetry is made-to-order in Mattes Black, White, Fusion Maple, Wild Cherry, & Cocoa Maple.



## Quad Island Station

**319** – A FOUR-student styling island! Each side features a utility drawer, storage cabinet with shelf, tool panel with holders for blow dryer & two curling irons, & a quad electrical outlet. Includes four 18"W x 30"H mirrors. 48"W x 48"D x 36"H x 66"H



## Economical Quad Station

**73578.634** – This economical FOUR-student styling island features a storage cabinet, blow dryer and 2" curling iron holders, and an electrical outlet at each student station. Includes four 22"W x 36"H mirrors. 96"L x 32"D x 36"H x 72"H



## Hexagon Station

**32991.3** – Hexagon Six-Student School Station. Each station includes quad-electric, tool holders, & a cubby hole for books and tools. 48"W base, 72"W ledge; overall 72" diameter station footprint, 168" diameter footprint (including seating & student work areas).





### *Chable*

**2501** – Patented by Collins, the Chable is a multi-purpose task chair. The Chable doubles as a manicure stool & nail table, a receptionist chair, a portable chemical application chair, & portable desk.



611.0.G – Bravo Styling Chair, pg 16

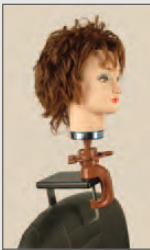


616.0.G – Sterling<sup>II</sup> Styling Chair, pg 18



606.0.G – Aero Styling Chair, pg 18

*For more made-to-order styling chair options see pages 16 – 19*



### *Simulator*

**502 Simulator** – Enables a student to work on mannequin heads in the exact same position and attitude as real customers, making it easier to learn how to shampoo, work out of a mirror, and use the chair in relation to the customer. Attaches to the chair like a headrest; can be added to existing hydraulic and shampoo chairs.

### **Vinyl Color Options**

*Jeffco seating is made-to-order in Wallaby's Black, Charcoal, Grey, Scarlet, and Chocolate.*



### *Wig Dryer*

**WD-1** – Jeffco-Collins Wig Dryer accommodates a full dozen mannequin heads on four tiers. 30"W x 15"D x 72"H, 110 volts, 15 amps. Durable construction, simple controls, engineered for even distribution of heat.



*Trimmers are made-to-order and can accommodate 8300, 8400, or 8900 ABS bowls or 8000 porcelain bowl. Bowl is ordered separately. If ordering cabinet only, specify bowl needs so Jeffco can accommodate when building your J31T or J31 Trimmer. Vacuum Breaker ordered separately.*



### *Trimmer*

**31** – Jeffco's Trimmer features an ABS shampoo bowl, behind-the-bowl laminated bottle well and convenient soiled-towel bin with right-side access door. 24"W x 19.25"D x 34.5"H *See insert above.*



### *Tall Trimmer*

**31T** – Jeffco's Tall Trimmer includes an upper towel storage cabinet with 2 doors and a full-width backplash. 24"W x 19.25"D x 73"H *See insert above.*

## Laminate Selections

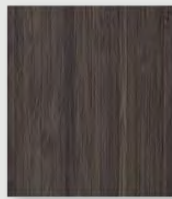
Jeffco's salon cabinetry is made in five popular matte colors, as shown on page 2. Jeffco cabinetry can be special ordered in any of the 49 laminate colors below for an additional cost. These printed selections are a good representation but printed colors are rarely 100% accurate. Contact your distributor for an actual sample when absolute color match is necessary.



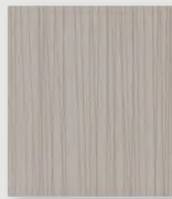
7966K-12  
5th Ave Elm



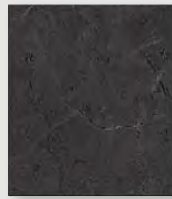
8839  
Ashen Ribbonwood



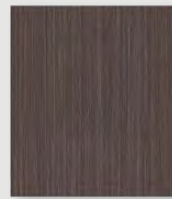
7949K-18  
Asian Night



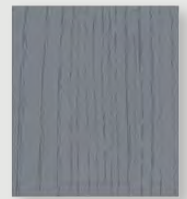
4940K-18  
Astro Strandz



4926K-07  
Black Alicante



6414-NG  
Black Riftwood



7978K-12  
Blue Barn



7983-38  
Boardwalk Oak



6307-58  
Burnt Strand



6449-58  
Charcoal Duotex



5884-58  
Chestnut Woodline



7739-58  
Cocoa Maple



7182-58  
Dune Wood



8828-58  
Earthen Twill



9012-NT  
Ebony



873-58  
Ebony Ribbonwood



4962-38  
Gesso Tracery



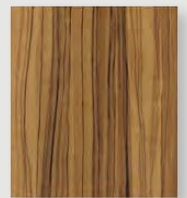
5887-NT  
Millennium Oak



863-58  
Myriad Ribbonwood



7500-58  
Noir Envision



5481-43  
Oiled Olivewood



902-58  
Platinum



858-58  
Pumice



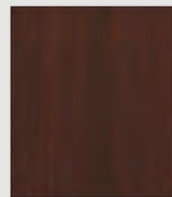
7979K-12  
Red Barn



4830-07  
Satin Stainless



909-SP  
Sculpted Black



QSE 7922-07  
Brighton Walnut



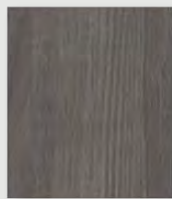
QSE 7054-60  
Wild Cherry



7759-43  
Select Cherry



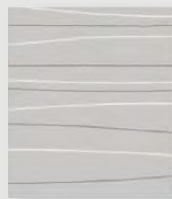
D91-60  
Slate Grey



7995-38  
Sterling Ash



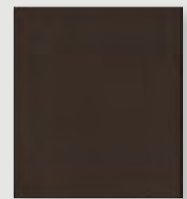
839-58  
Stop Red



927-SP  
Sculpted Folkstone



QSE 7909-60  
Fusion Maple



QSE 7933-07  
Cafelle



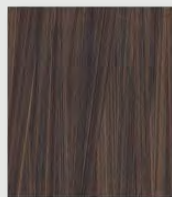
9283-NG  
Walnut Riftwood



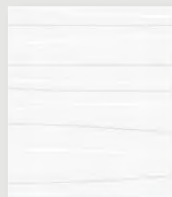
7969K-12  
Warehouse Oak



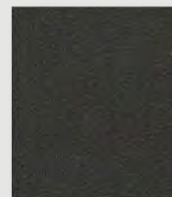
6410-NG  
Weathered Beamwood



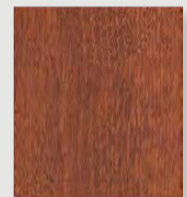
6306-58  
Wenge Strand



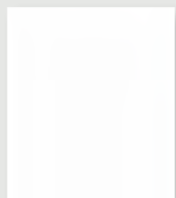
949-SP  
Sculpted White



QSE 4623-60  
Graphite Nebula



QSE WC521  
Shaker Cherry



949-58  
White



7976-K12  
White Cypress



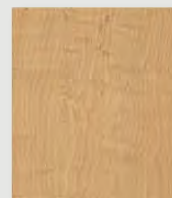
9285-58  
White Twill



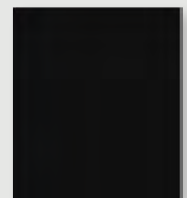
WX421-H  
Witchcraft



7957K-78  
Zanzibar



QSE 10734-60  
Limber Maple



QSE 909-58  
Matte Black



## Vinyl Selections

Jeffco's Quick Salon Seating is made in five popular colors, as shown on page 2. All Jeffco "Made-to-Order" seating can be ordered in any of the 130 vinyl colors below for an additional cost. These printed selections are a good representation but printed colors are rarely 100% accurate. Contact your distributor for an actual sample when absolute color match is necessary.

									
US 322 Sun Yellow	US 504 Rosealee	US 503 Pink	US 515 Bristol Blue	US 517 Fjord Blue	US 513 Surf	US 501 Froth	US 502 Coral Sand	US 500 Ivory	US 394 Adobe White
									
US 524 Golden Corn	US 358 Tomato	US 415 Mauve	US 518 Dutch Blue	US 526 Sage	US 417 Dusty Jade	US 401 Vicuna	US 402 Shell	US 385 Parchment	US 396 Alabaster
									
US 324 Goldenrod	US 372 Mandarin Orange	US 416 Tea Rose	US 414 Wedgewood	US 527 Artichoke	US 528 Northwoods	US 519 Doe	US 406 Peach	US 404 Bone	US 410 Taupe
									
US 434 China Green	US 343 Emerald	US 505 Rouge Red	US 353 Space Blue	US 529 Olive Green	US 508 Lilac	US 387 Camel	US 412 Rose	US 409 Bisque	US 403 Putty
									
US 522 Rustic Brown	US 512 Dark Purple	US 507 Dark Cherry	US 514 Capri Blue	US 530 Alpine	US 509 Grape	US 421 Oak	US 521 Sunset	US 424 Dewberry	US 525 Gray Moss
									
US 383 Espresso	US 393 Black	US 510 Concord	US 516 Sky Blue	US 344 Forest	US 506 Sangria	US 376 Terra Cotta	US 520 Cinnabar	US 423 Woodrose	US 425 Greystone
									
US 375 Chestnut	US 381 Mocha	US 523 Bronze	US 432 Imperial Blue	US 350 Yew Green	US 361 Plum	OLY380 Breeze	OLY150 Raspberry	OLY130 American Beauty	OLY350 Orange Blast
									
OLY265 Bittersweet	OLY115 Black	OLY235 Gunmetal	OLY185 Slate	OLY110 Cadet	OLY120 Dove	OLY385 Canvas	OLY330 Red Berry	OLY335 Chili Pepper	OLY195 New Burgundy
									
OLY325 Aubergine	OLY365 Purple Velvet	OLY285 Majestic	OLY160 Regimental Blue	OLY205 Graphite	OLY125 Blue Ridge	OLY170 White	OLY140 Cordovan	OLY105 Burgundy	OLY230 Claret
									
OLY310 Honeydew	OLY145 Deep Violet	OLY190 Royal	OLY290 Lake	OLY295 Ice Blue	OLY300 Tahiti	OLY180 Sand	OLY225 Paprika	OLY320 Pumpkin	OLY220 Gingersnap
									
OLY250 Basil	OLY305 Leaf	OLY200 Crocus	OLY345 Cornsilk	OLY340 Cork	OLY165 Lt. Gray	OLY275 Oat	OLY260 Java	OLY215 British Tan	OLY225 Earth
									
OLY155 Hunter	OLY175 Grotto	OLY375 Tropic	OLY315 Sundance	OLY245 Desert	OLY280 Suede	QSE Wallaby Camel	QSE Wallaby Black	QSE Wallaby Chocolate	QSE Wallaby Charcoal
									
OLY355 Pine Needle	OLY135 Turquoise	OLY370 Spa	OLY270 Desert Tan	OLY210 Cinnamon	OLY240 River Rock	QSE Wallaby Scarlet	QSE Wallaby Pearl	QSE Wallaby Blue	77552 Matrix White

*Quality, Value, Service*  
*Building Beauty That Lasts Since 1965*



*Jeffco Salon Equipment, LLC*  
*2000 Bowser Road / P.O. Box 2279*  
*Cookeville, TN 38502-2279*  
*800-951-8294*  
*JeffcoSalonEquipment.com*