



collins

Mosaic

of Salon Equipment

4th Edition

Contents

3	Salon Chairs
14	Quick Ship Equipment & Stools
16	Portables & Vanities
18	Styling Stations <i>Grouped by Families</i>
26	Bradford Collection
30	Salon & Barbershop Photos
34	Shampoo Shuttles
36	Shampoo Cabinetry
37	Spa Collection
38	Color Centers
40	Manicure Equipment
42	Pedicure Equipment
43	Reception Seating
44	Retail Displays
46	Reception Desks
48	B Series Barber Chairs
52	Barber Chairs & Equipment
56	Bowls & Accessories
58	Dryers, Steamer, & Processors
61	Comfort Zone Mats
62	Mosaic Color Selections



Collins Manufacturing Company
2000 Bowser Road • PO Box 2279
Cookeville, TN 38506/2

P 800-292-6450 • F 931-528-5472
www.CollinsMfgCo.com

About Collins

Collins believes product quality is the principal key to our success, and to yours. A good haircut makes for a satisfied and repeat customer, but a bad haircut... and so it is with salon equipment. You soon forget the price, but you're slow to forget sub-standard quality. The results speak volumes. Collins believes that 98% of everything the company has shipped over the last thirty years remains in service today... now that's QUALITY!

Service is KEY, and Collins is famous for customer service. Whether it's an inquiry, an order, a shipping damage claim, warranty claim, or just a simple question, the company's staff makes every effort to ensure your needs are met. Customer service is courteous and LIVE at Collins.

Collins Warranties are simply UNMATCHED in the beauty industry. Collins warrants to the original purchaser that all of our Made-in-the-USA hydraulic bases are Unconditionally Warranted for 7 1/2 Years from the date of purchase – 10 years on our B Series barber chairs!

Collins gives you CHOICES! Collins offers you 400+ products in our QSE catalog, plus another 500+ products in this made-to-order Mosaic catalog. In 2010, Collins acquired the assets of Jeffco Salon Equipment, which operates as a wholly owned subsidiary of Collins. Jeffco's catalog offers 200+ products.

Collins is located near the epicenter of the US population, which translates into less-than-average shipping costs, & quicker-than-average transit times from the factory to your salon. Collins people carefully pack your order for safe shipment directly to your salon – and the company has 99% on-time shipping performance.

Started in 1983, the company remains privately held by the original owners, Ron & Melinda Swann. Additionally, all three Swann sons have key managerial roles in the business, and all three look forward to serving the industry for the next 30 years. When you buy Collins, you have the backing of the Swann family, plus the backing of the company's associates, managers, designers, salesmen, & distributors.



In a rush? Chairs and cabinetry with this symbol ship in just 2-3 weeks! Accessories and mats can ship in just a few days! Inquire with your distributor and ask for our QSE catalog to see the entire Quick Ship offering.

Cover image of Thanks-Giving Square Chapel
located in Dallas, TX, by Bill J. Boyd
<http://billjboydphotography.smugmug.com>

Mosaic Edition 4 was printed Q4 2017

Warranty Information

Collins Beauty and Barber Equipment is carefully manufactured, inspected, and guaranteed against defects in material or workmanship from the date of purchase as follows:



10 YEARS: The B Series Barber Chairs are guaranteed for 100,000 Haircuts or ten years. The 10 Year warranty covers hydraulic base, gas cylinder, and mechanical components; upholstery and the remainder of chair is covered for 3 Years.



7 1/2 YEARS: All USA Made foot-operated hydraulic bases are guaranteed by Collins for seven and one-half years.



3 YEARS: BKB Electric Base, molded urethane arms, and cabinet drawer-slides are guaranteed for three years.

2 YEARS: Jeffco Apollo dryer motors and hoods and all Collins-Jeffco faucets are guaranteed for two years.

1 YEAR: All remaining components, unless noted otherwise, are guaranteed for a period of one year.



5 YEARS: Collins Comfort Zone anti-fatigue mats, Collins ABS Shampoo Bowls, K Hydraulic base, SolAir dryer motors and hoods, and chair back reclining mechanisms are guaranteed for five years.

This guarantee applies only to the original purchaser and begin at the date of purchase. These warranties cover replacement-repair parts, not labor, and they do not cover normal wear and tear or damage caused by water or fire, staining, fading, or discoloration of fabrics, laminates, or finishes, or where there is evidence of tampering, mishandling, abuse, or misuse of the equipment. Should you need replacement parts or to file a warranty claim, please contact the distributor from whom you purchased your Collins equipment.

6700 Quarta

Quarta styling chairs feature heavy duty, fabricated tubular steel arms that wrap around the back of the chair – construction that makes the Quarta all-but indestructible. The tubular steel Collins symbol footrest shown is unique to the Quarta. The Quarta is one of Collins' top 3 fan-favorite chairs. Quarta chairs look best on the optional 20-20 Square Hydraulic Base, but can be ordered on any base. Measures 21" between the arms.



Salon Loft • LOOK Style Society
Las Vegas, Nevada



692 • 6700X



703 • 67BWS



701 • 67ES



692 • 6700X



692 • 6700X



695 • 6710X



These metal finishes are available when ordering Quarta chairs & the 20-20 Square Hydraulic Base. See page 5 for details.

- | | | |
|-----|-------|---|
| 689 | 6700 | Quarta Hydraulic Styling Chair w/ Standard Base |
| 690 | 6700V | Quarta Hydraulic Styling Chair w/ Enviro Base |
| 691 | 6700S | Quarta Hydraulic Styling Chair w/ Slim-Star Base |
| 692 | 6700X | Quarta Hydraulic Styling Chair w/ 20-20 Square Base |
| 693 | 6710 | Quarta Hydraulic All Purpose Chair w/ Standard Base |
| 694 | 6710V | Quarta Hydraulic All Purpose Chair w/ Enviro Base |
| 695 | 6710X | Quarta Hydraulic All Purpose Chair w/ 20-20 Square Base |
| 697 | 6720D | Quarta Dryer Chair w/ Collins SolAir Dryer |
| 698 | 6730L | Quarta Lever-Control Shampoo Chair w/ gas lift |
| 700 | 6750L | Quarta Lever-Control Shampoo Chair w/ Kick Out Legrest |
| 701 | 67ES | Quarta Electric 59 Shampoo Chair w/ Kick Out Legrest |
| 703 | 67BWS | Quarta Backwash Shuttle w/ CB86 or CB87 Tilting Bowl |

7100 Ashton

When you combine class, comfort, and plush the result is this beautiful Ashton chair. This classic button-tuft look can be yours in any of 100+ colors and five different hydraulic bases options. This distinctive chair features a 1/2" gap all around the seat cushion to let hair escape and is most accommodating, measuring an extra-wide 22" between the arms.

Collins Equipment is Proudly
Made in the USA!



736 • 7100H



737 • 7100S



738 • 7100X



740 • 7120D



742 • 71BWS

- | | | |
|-----|-------|---|
| 734 | 7100 | Ashton Hydraulic Styling Chair w/ Standard Base |
| 735 | 7100V | Ashton Hydraulic Styling Chair w/ Enviro Base |
| 736 | 7100H | Ashton Hydraulic Styling Chair w/ Heavy-Duty Base |
| 737 | 7100S | Ashton Hydraulic Styling Chair w/ Slim-Star Base |
| 738 | 7100X | Ashton Hydraulic Styling Chair w/ 20-20 Square Base |
| 740 | 7120D | Ashton Dryer Chair w/ Collins SolAir Dryer |
| 741 | 7125 | Ashton Premium Reception Area Chair w/ cast-aluminum legs |
| 742 | 71BWS | Ashton Backwash Shuttle w/ CB86 or CB87 Tilting Bowl |

6800 Nouveau

The Nouveau styling chair has distinctive European styling. Features premium quilted upholstery, deluxe footrest, and a reliable American-Made hydraulic system. Pictured here on the optional Slim-Star base and the 20-20 Square base. Although it looks like it would trap hair clippings, the chair features a half-inch gap all around the seat cushion to let hair escape.



706 • 6800S



712 • 68BWS



711 • 68ES



707 • 6800X

20-20 Base plate shown
w/ Copper Vein finish

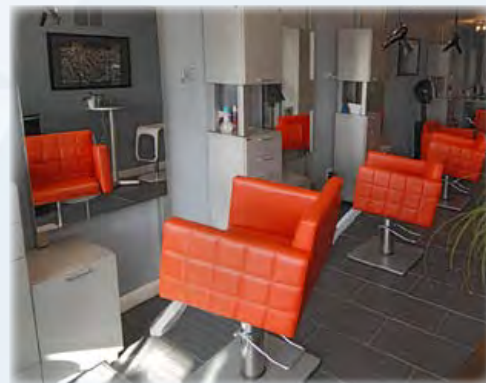
- | | | |
|-----|-------|---|
| 705 | 6800 | Nouveau Hydraulic Styling Chair w/ Standard Base |
| 706 | 6800S | Nouveau Hydraulic Styling Chair w/ Slim-Star Base |
| 707 | 6800X | Nouveau Hydraulic Styling Chair w/ 20-20 Square Base |
| 709 | 6820D | Nouveau Dryer Chair w/ Steel Legs & SolAir Dryer |
| 710 | 6825 | Nouveau Reception Area Chair w/ Steel Legs |
| 711 | 68ES | Nouveau Electric 59 Shampoo Chair w/ Kick Out Legrest |
| 712 | 68BWS | Nouveau Backwash Shuttle w/ CB86 or CB87 Tilting Bowl |



784 • 8282 Magnum XL Electric Shampoo Chair, 22" between arms, for use w/ backwash bowls - neckrest at 35" from floor.



709 • 6820D



Randy Rix Hair Studio
Baltimore, Maryland

7800 Aluma



767 • 7800S



765 • 7800



767 • 7800S



769 • 7820D



772 • 78BWS

Clean modern lines give the Aluma chair a look that sets it apart from the rest. It features a comfortably contoured seat and back, premium quilted stitching, solid cast-aluminum arms, and our laser-steel footrest.

- | | | |
|-----|-------|---|
| 765 | 7800 | Aluma Hydraulic Styling Chair w/ Standard Base |
| 766 | 7800V | Aluma Hydraulic Styling Chair w/ Enviro Base |
| 767 | 7800S | Aluma Hydraulic Styling Chair w/ Slim-Star Base |
| 769 | 7820D | Aluma Dryer Chair w/ Collins SolAir Dryer |
| 770 | 7830L | Aluma Lever-Control Shampoo Chair w/ gas lift |
| 771 | 7840 | Aluma Task Chair w/ casters & gas lift |
| 772 | 78BWS | Aluma Backwash Shuttle w/ CB86 or CB87 Tilting Bowl |

5100 Fusion

Spectacular upholstery, tasteful steel arms, and impressive comfort are fused together into this striking chair. Many stylists have remarked on the comfort of this chair, with its contoured back supporting the curve of the spine, and how it encourages the client to sit up straighter.



651 • 5100



652 • 5100S



656 • 5120D



654 • 5100X

- | | | |
|-----|-------|---|
| 651 | 5100 | Fusion Hydraulic Styling Chair w/ Standard Base |
| 652 | 5100S | Fusion Hydraulic Styling Chair w/ Slim-Star Base |
| 653 | 5100V | Fusion Hydraulic Styling Chair w/ Enviro Base |
| 654 | 5100X | Fusion Hydraulic Styling Chair w/ 20-20 Square Base |
| 656 | 5120D | Fusion Dryer Chair w/ Collins SolAir Dryer |
| 657 | 5140 | Fusion Task Chair w/ Pneumatic lift & casters |

Comfort Zone Mats p61

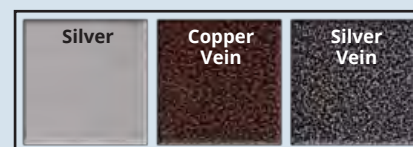


Booster Seat



873 • 150

These metal finishes are available when ordering Quarta chairs, Amati & Enova pieces, and the optional 20-20 Square Hydraulic Base.



These metal components are stocked at Collins in the Silver finish. The Silver Vein & Copper Vein finishes can be specified at no additional cost, however, they take two weeks longer than the inventoried Silver finish.

- | | | |
|-----|-------|---|
| 728 | 7000 | Bella Hydraulic Styling Chair w/ Standard Base |
| 730 | 7000S | Bella Hydraulic Styling Chair w/ Slim-Star Base |
| 729 | 7000V | Bella Hydraulic Styling Chair w/ Enviro Base |
| 732 | 7020D | Bella Dryer Chair w/ Collins SolAir Dryer |
| 733 | 7040 | Bella Task Chair w/ casters & gas lift |

7000 Bella



728 • 7000



730 • 7000S



732 • 7020D



728 • 7000

The distinctive curvature of Bella's metal arms and graceful lines of its cushions give it a feminine feel, and it looks great in any color! While the Bella has delicate, feminine styling, it is deceptively comfortable and very accommodating. With 22" inches between the arms, your clients will thank you for selecting the Bella!

9100 Silhouette



807 • 9100S



805 • 9100



812 • 9130L



814 • 91BWS



811 • 9120D

Shown with optional 10810 armpads & Silver Vein arms.

The beautifully tailored Silhouette chair has cast aluminum alloy arms with real wood armpads that can be ordered in maple, cherry, cafelle, or mahogany. Another standard feature on Silhouette hydraulic chairs is the "Easy Step" t-bar footrest with cast aluminum tread plate.

- | | | |
|-----|-------|--|
| 805 | 9100 | Silhouette Hydraulic Styling Chair w/ Standard Base |
| 806 | 9100V | Silhouette Hydraulic Styling Chair w/ Enviro Base |
| 807 | 9100S | Silhouette Hydraulic Styling Chair w/ Slim-Star Base |
| 808 | 9110 | Silhouette Hydraulic All Purpose Chair w/ Standard Base |
| 809 | 9110V | Silhouette Hydraulic All Purpose Chair w/ Enviro Base |
| 811 | 9120D | Silhouette Dryer Chair w/ Collins SolAir Dryer |
| 812 | 9130L | Silhouette Lever Control Shampoo Chair |
| 813 | 9140 | Silhouette Task Chair w/ Gas Lift & Casters |
| 814 | 91BWS | Silhouette Backwash Shuttle w/ CB86 or CB87 Tilting Bowl |

7700 & 7710 Access



Design by Studio Six5 • Georgian Lakeside
Assisted Living & Memory Care
Roswell, Georgia



763 • 7710



When ordering Chelsea, Belize, Silhouette, or Vanelle chairs, please select one of the following wooden armpad colors: (L to R) Mahogany, Cherry, Maple, or Cafelle.

Option #10810
Black urethane armpads
in lieu of wood



The Patent-Pending Access Chair has a unique footrest that is split into two halves & joined in such a manner that both halves easily rotate to the sides of the chair & out of the way. This footrest makes for a safer entry and exit for people who need this advantage. As an additional Access feature, the arm of the chair is removable to permit a person to gain entry to the chair from the side; the arm can be firmly reattached to the chair for safety. Measures 21" between arms.

The Access footrest can also be specified on most any chair, see photo center left.



- | | | |
|-----|-------|---|
| 761 | 7700 | Access Styling Chair w/ Standard Base |
| 762 | 7700V | Access Styling Chair w/ Enviro Base |
| 763 | 7710 | Access All-Purpose Chair w/ Standard Base |
| 764 | 7710V | Access All-Purpose Chair w/ Enviro Base |

8101 Chelsea

The Chelsea BA is stylish, plush, and comfortable. This chair style is specified for new salon projects by some of the top salon designers! Features include Powder Coated cast-aluminum arms with real wood armpads, expert quilted upholstery, and a premium T-Bar footrest. When ordering, specify armpad wood: Cherry, Cafelle, Mahogany, or Maple.



780 • 8121D



774 • 8101



774 • 8101



775 • 8101V



Design by Studio Six5 • Cottonwood Place
Assisted Living & Memory Care
Holladay, Utah



Specify armpad wood: Cherry,
Cafelle, Mahogany, or Maple.



871 • 8131L



782 • 81BWS

- | | | |
|-----|-------|--|
| 774 | 8101 | Chelsea BA Hydraulic Styling Chair w/ T-Bar Footrest & Standard Base |
| 775 | 8101V | Chelsea BA Hydraulic Styling Chair w/ T-Bar Footrest & Enviro Base |
| 776 | 8101S | Chelsea BA Hydraulic Styling Chair w/ T-Bar Footrest & Slim-Star Base |
| 777 | 8111 | Chelsea BA Hydraulic All-Purpose Chair w/ T-Bar Footrest & Standard Base |
| 778 | 8111V | Chelsea BA Hydraulic All-Purpose Chair w/ T-Bar Footrest & Enviro Base |
| 780 | 8121D | Chelsea BA Dryer Chair w/ Collins SolAir Dryer |
| 781 | 8131L | Chelsea BA Lever-Control Shampoo Chair w/ gas lift |
| 782 | 81BWS | Chelsea Backwash Shuttle w/ CB86 or CB87 Tilting Porcelain Bowl |

9400 & 9410 Maxi



816 • 9400



817 • 9410



817 • 9410

The Maxi is a heavily padded, oversized heavy-duty chair with telescoping arms. Between the arms measures 23" and 26" when extended. This unique feature permits this family of chairs to comfortably accommodate customers that most chairs cannot handle. The Maxi comes with the Collins Heavy Duty hydraulic pump and oversized 26" diameter baseplate.



- | | | |
|-----|-------|---|
| 816 | 9400 | Maxi Hydraulic Styling Chair w/ HD Base |
| 817 | 9410 | Maxi Hydraulic All Purpose Chair w/ HD Base |
| 819 | 9420D | Maxi Dryer Chair w/ Collins SolAir dryer |

4900 Callie

The square cushions, angled arms, complimentary upholstery pattern, and logo t-bar footrest makes the new Callie chair a stand-out chair... and it looks great on any base! The contemporary design only gets better when you pair it with an exciting vinyl color (see page 63). Between the arms measures 20".



644 • 4900

646 • 4900S

- | | | |
|------|-------|---|
| 644 | 4900 | Callie Hydraulic Styling Chair w/ Standard Base |
| 645 | 4900V | Callie Hydraulic Styling Chair w/ Enviro Base |
| 646 | 4900S | Callie Hydraulic Styling Chair w/ Slim-Star Base |
| 647 | 4900X | Callie Hydraulic Styling Chair w/ 20-20 Square Base |
| 649 | 4920D | Callie Dryer Chair w/ Collins SolAir Dryer |
| 650 | 4940 | Callie Task Chair w/ pneumatic lift & casters (not shown) |
| 650a | 4960 | Callie Manicure Stool w/ pneumatic lift & casters |



649 • 4920D



647 • 4900X



650a • 4960



*Collins features the Industry's
Best Warranty. See page 2 for details.*

5200 Phenix



660 • 5200S



Proudly made in the USA!



660 • 5200S



658 • 5200



659 • 5200V



661 • 5200X

- | | | |
|-----|-------|---|
| 658 | 5200 | Phenix Hydraulic Styling Chair w/ Standard Base |
| 659 | 5200V | Phenix Hydraulic Styling Chair w/ Enviro Round Base |
| 660 | 5200S | Phenix Hydraulic Styling Chair w/ Slim-Star Base |
| 661 | 5200X | Phenix Hydraulic Styling Chair w/ 20-20 Square Base |
| 663 | 5220D | Phenix Dryer Chair w/ Black SolAir Dryer |
| 664 | 5240 | Phenix Task Chair w/ pneumatic lift & casters (not shown) |

The Phenix is a combination of interesting design lines, custom upholstery, and beautifully polished aluminum arms with padded upholstered armrests. The Phenix accommodates a wide range of customers with 22" between the arms.

9800 Taress

To create this stylish look, the Taress chair grouping combines fashioned angles, fashioned accents, and fashioned comfort. Standard on the Taress is the laser-steel footrest w/ Collins symbol. While any two colors can be used for the Taress, pictured are our favorite combinations. Measures 20" between arms.



841 • 9820D



846 • 98BWS



835 • 9800S



837 • 9810



836 • 9800X

- 833 9800 Taress Hydraulic Styling Chair w/ Laser-Steel Footrest & Standard Base
- 834 9800V Taress Hydraulic Styling Chair w/ Laser-Steel Footrest & Enviro Base
- 835 9800S Taress Hydraulic Styling Chair w/ Laser-Steel Footrest & Slim-Star Base
- 836 9800X Taress Hydraulic Styling Chair w/ Laser-Steel Footrest & 20-20 Square Base
- 837 9810 Taress Hydraulic All-Purpose Chair w/ Laser-Steel Footrest & Standard Base
- 838 9810V Taress Hydraulic All-Purpose Chair w/ Laser-Steel Footrest & Enviro Base
- 841 9820D Taress Dryer Chair w/ Collins SolAir Dryer
- 842 9830L Taress Lever-Control Shampoo Chair
- 843 9840 Taress Task Chair w/ gas lift & casters
- 844 9850L Taress Lever-Control Shampoo Chair w/ Kick Out Legrest
- 845 98ES Taress Electric Up/Down Shampoo Chair w/ kick Out Legrest
- 846 98BWS Taress SA Backwash Shuttle w/ CB86 or CB87 Tilting Porcelain Bowl

Booster Seat



874 • 150

7600 Vittoria



755 • 7600S

Shown w/ optional 11402 footrest



754 • 7600V



755 • 7600S



757 • 7620D



Mint Salon
Green Bay, Wisconsin



Shown w/ optional
BWSC connecting chases

759 • 76BWS

The Vittoria chair combines comfort, style, and durability with European styling to create this beautiful salon chair. Fabricated steel arms, thick foam, and expert tailoring are standard features. Measures 22" between the arms.

- 753 7600 Vittoria Hydraulic Styling Chair w/ Standard Base
- 754 7600V Vittoria Hydraulic Styling Chair w/ Enviro Base
- 755 7600S Vittoria Hydraulic Styling Chair w/ Slim-Star Base
- 757 7620D Vittoria Dryer Chair w/ Collins SolAir Dryer
- 758 7640 Vittoria Task Chair w/ casters & gas lift
- 759 76BWS Vittoria Backwash Shuttle w/ CB86 or CB87 Tilting Bowl

5500 Belize



665 • 5500

The Belize family of chairs is an upscale chair for upscale salons, featuring a compound curved seat & back, custom tailored upholstery, cast-aluminum powder coated arms, real wood arm pads in your choice of color, and the deluxe t-bar footrest. The Belize dryer chair base comes standard in your choice of laminate, not vinyl.



666 • 5500V



667 • 5500S



673 • 5540



672 • 5530L



671 • 5520D

Base is laminated



When ordering Chelsea, Belize, Silhouette, or Vanelle chairs, please select one of the following wooden arm pad colors: (L to R) Mahogany, Cherry, Maple, or Cafelle.

665	5500	Belize Hydraulic Styling Chair w/ Standard Base
666	5500V	Belize Hydraulic Styling Chair w/ Enviro Base
667	5500S	Belize Hydraulic Styling Chair w/ Slim-Star Base
668	5510	Belize Hydraulic All Purpose Chair w/ Standard base
669	5510V	Belize Hydraulic All Purpose Chair w/ Enviro Base
671	5520D	Belize Dryer Chair w/ SolAir Dryer
672	5530L	Belize Lever Control Shampoo Chair
673	5540	Belize Task Chair w/ Gas Lift & Casters

674	5900	Cirrus Hydraulic Styling Chair w/ Standard Base
675	5900V	Cirrus Hydraulic Styling Chair w/ Enviro Base
676	5900S	Cirrus Hydraulic Styling Chair w/ Slim-Star Base
678	5920D	Cirrus Dryer Chair w/ Collins SolAir Dryer
679	5940	Cirrus Task Chair w/ pneumatic lift & casters

Check out our
Reception
Seating!
Page 43



000 • 2570



741 • 7125

5900 Cirrus



676 • 5900S



674 • 5900



676 • 5900S



679 • 5940



678 • 5920D

Shown w/ optional 10802 footrest

The Cirrus has it all! Beautiful curves, good proportions, and style, plus it has comfort and durability. The comfortably-padded Cirrus sports highly polished cast-aluminum arms that are capped with soft but durable urethane arm pads.



674 • 5900



675 • 5900V

4700 Mallory



643g • 4740



643a • 4700



643c • 4700S



643c • 4700S



643d • 4700X



643c • 4700S

Introducing the newest Mosaic seating style, the Mallory! If clean lines is your style, this is the chair for you! Elegant metal arms, a mild concave shaped back, squared corners, and a vertical double stitch seam along the center – both front and back – give this chair a fresh, modern look. 20" between arms with a 19.5" seat depth.

- | | | |
|------|-------|--|
| 643a | 4700 | Mallory Hydraulic Styling Chair w/ Standard Base |
| 643b | 4700S | Mallory Hydraulic Styling Chair w/ Enviro Base |
| 643c | 4700V | Mallory Hydraulic Styling Chair w/ Slim-Star Base |
| 643d | 4700X | Mallory Hydraulic Styling Chair w/ 20-20 Square Base |
| 643f | 4720D | Mallory Dryer Chair w/ Collins SolAir Dryer |
| 643g | 4740 | Mallory Task Chair w/ casters & pneumatic lift |

- | | | |
|-----|-------|--|
| 632 | 3700 | Cody Hydraulic Styling Chair w/ Standard Base |
| 633 | 3700V | Cody Hydraulic Styling Chair w/ Enviro Base |
| 634 | 3700S | Cody Hydraulic Styling Chair w/ Slim-Star Base |
| 635 | 3710 | Cody Hydraulic All Purpose Chair w/ Standard Base |
| 636 | 3710V | Cody Hydraulic All Purpose Chair w/ Enviro Base |
| 638 | 3720D | Cody Dryer Chair w/ Collins SolAir Dryer |
| 639 | 3730L | Cody Lever-Control Shampoo Chair w/ gas lift |
| 640 | 3740 | Cody Task Chair w/ Casters & gas lift |
| 641 | 3750L | Cody Shampoo Chair w/ Lock-in-Place Kick Out Legrest |
| 642 | 37BWS | Cody Backwash Shuttle w/ CB86 or CB87 Tilting Porcelain Bowl |



Roots Salon
Brookfield, Wisconsin

3700 Cody



632 • 3700



634 • 3700S



635 • 3710



639 • 3730L



638 • 3720D



641 • 3750L



642 • 37BWS

Every chair in the Cody grouping measures 22" between the arms and has heavily padded, oversized cushions. The Cody combines size, expert tailoring and durable molded urethane arms to yield a chair that meets the needs of modern day salons.

6500 Le Fleur



682 • 6500S



683 • 6510



687 • 6530L



688 • 6540



686 • 6520D



680 • 6500

The Le Fleur style of chairs features premium quilted upholstery in an open flower stitched pattern and sleek, durable urethane arms. The Le Fleur is offered in every type of chair, from styling to All Purpose, and shampoo to task. This chair is sure to meet your salon's needs!

680	6500	Le Fleur Hydraulic Styling Chair w/ Standard Base
681	6500V	Le Fleur Hydraulic Styling Chair w/ Enviro Base
682	6500S	Le Fleur Hydraulic Styling Chair w/ Slim-Star Base
683	6510	Le Fleur Hydraulic All Purpose Chair w/ Standard Base
684	6510V	Le Fleur Hydraulic All Purpose Chair w/ Enviro Base
686	6520D	Le Fleur Dryer Chair w/ Collins SolAir Dryer
687	6530L	Le Fleur Lever-Control Shampoo Chair w/ gas lift
688	6540	Le Fleur Task Chair w/ casters & gas lift



All The Buzz Salon
Germantown, Illinois



Savvy Salon & Day Spa • Cornelius, NC

8282 ESC

Collins' 8282 Electric Shampoo Chair features a safe UL listed, low-voltage, DC electric drive motor, 110 volt 9.7 amp digital transformer-power supply, water-proof hand-held control wand, lock-in-place kick-out legrest, and a rear water-shedding apron. The Magnum XL Shampoo Chair has oversized cushions and measures 22 3/4" between the arms; it will lift 300+ pounds.

784 8282 Magnum XL Electric Shampoo Chair with kick-out legrest and low voltage electric motor drive.



7900 Hackney

The Hackney features a heavy duty base, custom quilted upholstery, and a concealed reclining mechanism that releases from either side of the chair. Fabricated steel arms have a silver vein powder coat finish. Rubber tread footrest (shown) is standard. 21" between the arms.

848 7900 Hackney Unisex Hydraulic Styling Chair
849 7910 Hackney Unisex Hydraulic All Purpose Chair
878 10729 Optional Barber footrest w/ Large Cast-Aluminum Man-Sized Logo Footrest



7900



7910

8600 Corivas



801 • 8630L



803 • 86BWS



799 • 8620D

*Optional 10802 T-Bar footrest



793 • 8600*



793 • 8600*



793 • 8600

793	8600	Corivas Hydraulic Styling Chair w/ Standard Base
794	8600V	Corivas Hydraulic Styling Chair w/ Enviro Base
795	8600S	Corivas Hydraulic Styling Chair w/ Slim-Star Base
796	8610	Corivas Hydraulic All Purpose Chair w/ Standard Base
799	8620D	Corivas Dryer Chair w/ Collins SolAir Dryer
801	8630L	Corivas Lever-Control Shampoo Chair w/ gas lift
802	8640	Corivas Task Chair w/ Casters & gas lift
803	86BWS	Corivas Backwash Shuttle w/ CB86 or CB87 Tilting Bowl

Shown with chair back cover, sold separately

The Corivas family of chairs features generously padded cushions, premium upholstery and stylish, durable urethane arms with internal steel support. Corivas is a popular design that will provide years of trouble-free service ...with style.

Chair Accessories

885	10120	Standard 4.5" Hydraulic Base Assembly w/ 24" Diameter Baseplate, Chrome Finish
888	11136	Slim-Star 3.5" Hydraulic Base Assembly w/ Cast Aluminum Five-Leg Base
890	11607	Enviro 4.5" Hydraulic Base Assy. w/ 24" Diameter Baseplate, Powder Coated Silver
892	20-20	20-20 Square Base w/ 4.5" Pump, Powder Coated Silver, Silver Vein, or Copper Vein
887	10652	Heavy Duty 5 1/2" Hydraulic Base Assy. w/ 27" Diameter Baseplate, Chrome Finish
892a	12330	3.5" K Hydraulic Base Assembly w/ 23" Diameter Baseplate, Chrome Finish. Imported.
893	BKB-4100	Electric Base, 7.5" Vertical Lift, Rated for 325 lbs Lift, 359 Degree Rotation
877	10268	Standard QSE Tubular Steel Footrest
878	10729	Cast Aluminum Barber Logo Footrest
881	11402	T-Bar Footrest w/ Collins Symbol
880	10802	T-Bar Footrest w/ Curved Tread
874	150	Booster Seat w/ Protective Skirt
875	250	Optional Matching Headrest
876	400	Tailored Plastic Chair-Back Cover
894	S02	Simulator for Mannequin Heads
1104	CZ1	Comfort-Zone for Nails



874 • 150



875 • 250



877 • 10268



878 • 10729



874 • 150



875 • 250



881 • 11402



880 • 10802



885 • 10120



887 • 10652



888 • 11136



890 • 11607



892 • 20-20



892a • 12330

These metal finishes are available for the 20-20 Square Hydraulic Base.



These metal components are stocked at Collins in the Silver finish. The Silver Vein & Copper Vein finishes can be specified at no additional cost, however, they take two weeks longer than the inventoried silver finish.

Collins Beauty & Barber Equipment is carefully manufactured, thoroughly inspected, and guaranteed against defects in material or workmanship as follows:

- 10 YEARS: The B Series Barber Chairs are guaranteed for 100,000 Haircuts or 10 years from the date of purchase.
- 7.5 YEARS: All Foot-Operated Hydraulic bases are guaranteed for seven and one-half years from the date of purchase.
- 5 YEARS: Collins Comfort Zone anti-fatigue mats, Collins ABS Shampoo Bowls, SolAir dryer motors & hoods, and chair-back reclining mechanisms are guaranteed for five years from the date of purchase.
- 3 YEARS: BKB Electric Base, molded urethane arms, and cabinet drawer-slides are guaranteed for three years from the date of purchase.
- 2 YEARS: Jeffco Apollo dryers and all Collins-Jeffco faucets are guaranteed for two years from the date of purchase.
- 1 YEAR: All remaining components, unless noted otherwise, are guaranteed for a period of one year from the date of purchase.

This guarantee applies only to the original purchaser and all claims must be made through the authorized Collins distributor from whom the equipment was purchased. These warranties cover replacement-repair parts, not labor, and they do not cover normal wear and tear or damage caused by water or fire, staining, fading, or discoloration of fabrics, laminates, or finishes, or where there is evidence of tampering, mishandling, abuse, or misuse of the equipment.



893 • BKB 4100

3 Year Warranty!

6900 Cigno



717 • 6900X



714 • 6900



716 • 6900S



721 • 6920D



723 • 6950L



725 • 69ES



722 • 6925



726 • 69BWS

Ross Salon & Blow Dry Bar
Palatine, Illinois

- 714 6900 Cigno Hydraulic Styling Chair w/ Standard Base
 715 6900V Cigno Hydraulic Styling Chair w/ Enviro Base
 716 6900S Cigno Hydraulic Styling Chair w/ Slim-Star Base
 717 6900X Cigno Hydraulic Styling Chair w/ 20-20 Square Base
 718 6910 Cigno Hydraulic All-Purpose Chair w/ Standard Base
 721 6920D Cigno Dryer Chair w/ Collins SolAir Dryer
 722 6925 Cigno Reception Area Chair w/ tapered cast-aluminum legs
 723 6950L Cigno Shampoo Chair w/ Kick Out Legrest
 725 69ES Cigno Electric 59 Shampoo Chair w/ Kick Out Legrest
 726 69BWS Cigno Backwash Shuttle w/ CB86 or CB87 Tilting Bowl
 For more Cigno items, please refer to Collins QSE catalog.
 784 8282 Magnum XL Electric Shampoo Chair features kick-out legrest & low voltage electric motor drive to raise & lower the chair. See your distributor for details.



784 • 8282



To view our complete
lineup of quick-ship
equipment, check out
our QSE catalog.

9701 Vanelle SA



820 • 9701



823 • 9711



829 • 9751L

831 • 97BWS
x2 + BWSC

826 • 9721D



When ordering Chelsea, Belize, Silhouette, or Vanelle chairs, please select one of the following wooden armpad colors: Mahogany, Cherry, Maple, or Cafelle.

- 820 9701 Vanelle SA Hydraulic Styling Chair w/ Standard Base
 823 9711 Vanelle SA Hydraulic All Purpose Chair w/ Standard Base
 826 9721D Vanelle SA Dryer Chair w/ Collins SolAir Dryer
 827 9731L Vanelle SA Lever Control Shampoo Chair
 829 9751L Vanelle SA Lever Control Shampoo Chair w/ Kick Out Legrest, Black Chassis
 831 97BWS Vanelle Backwash Shuttle w/ Tilting CB86 or CB87 Porcelain Bowl
 For more Vanelle items, please refer to Collins QSE catalog or contact your distributor.

Quick Salon Equipment (pgs 14-15) ships in 2-3 weeks

Club Pedis

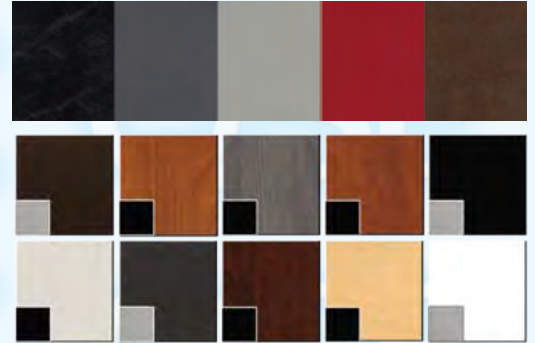


QSE



625 • 2555
623 • 2513

*Hygienic & Comes Fully Assembled!
No Plumber Needed!
Doubles as a Dryer Chair!*



QUICK SALON EQUIPMENT UPHOLSTERY (TOP ROW)

All QSE seating is manufactured in Wallaby's Black, Charcoal, Grey, Scarlet, and Chocolate.

QUICK SALON EQUIPMENT LAMINATES (MIDDLE & BOTTOM)

All QSE cabinetry is manufactured in Cafelle, Wild Cherry, Sterling Ash, Shaker Cherry, Matte Black, White Twill, Graphite Nebula, Brighton Walnut, Fusion Maple, and Matte White laminates.

If you order QSE equipment in other colors than those listed above they take 2 weeks longer and cost 10% more.



624 • 2550



626 • 2560
623 • 2513



See page 41 for the Ashton Club Pedi

623	2513	Club Pedicure Ottoman w/ drawer & casters, 16" x 16"
624	2550	Club Pedicure Cigno Chair w/ Free Footsie Bath
625	2555	Club Pedicure Blush Chair w/ Free Footsie Bath
626	2560	Club Pedicure Nouveau Chair w/ Free Footsie Bath
	10824	Optional Three-Zone Massage & Lumbar Heat
628	120TC	Footsie Bath Foot Spa w/ heat, vibration, & 10 liners
629	R001	Footsie Bath Disposable Liners, package of 100 liners

Manicure & Task Stools

601	1660	Kiva Stool w/ Casters & Gas Lift
602	1760	Berra Stool w/ Casters & Gas Lift
603	1860	Original QSE Stool w/ Casters & Gas Lift
604	1860M	QSE Tall Stool w/ Footring, Casters & Gas Lift
605	1870	Bicycle Cutting Stool w/ Casters & Gas Lift
611	2023.1	Ergo Tall Stool w/ Footring, Casters & Gas Lift
617	2425	Utility Stool w/ Round Seat, Casters & Gas Lift
618	2501	Chable w/ Casters & Gas Lift
619	2505	Pedi-Chable w/ Casters & Gas Lift
830	9760	Vanelle Manicure Stool w/ Casters & Gas Lift



602 • 1760



603 • 1860



601 • 1660



830 • 9760



601 • 1860M



611 • 2023.1



605 • 1870



617 • 2425



618 • 2501



619 • 2505

QSE items ship in 2-3 weeks only in colors listed above.

Portables



1003 • 953-15



1004 • 959-15



996 • 935-15



955 • 624-20



1017 • 6605-20



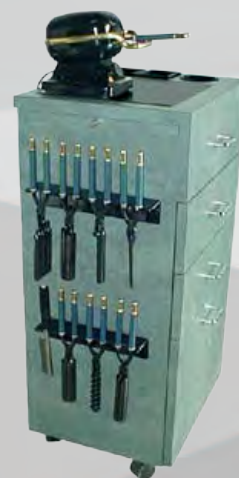
1018 • 6606-20



Tambour cabinet doors have a clean European style. The individual slats of the tambour cabinet doors are connected by a soft hinge, allowing for smooth, whisper-quiet operation.



Marcel Tool Holders can be added to most any Portable or Station



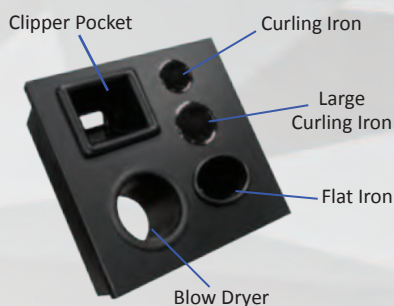
946 • 513-18-3

- | | | |
|------|----------|---|
| 1003 | 953-15 | Enova Premium Portable Station w/ deluxe locking casters, pull-out breadboard, two drawers, and tilt-out tool panel. 15.5"W x 15"D x 35"H |
| 1004 | 959-15 | Enova CE Portable Station w/ locking industrial casters, recessed top for product retention, breadboard, two drawers, and tilt-out tool panel. 15.5"W x 15"D x 38"H |
| 996 | 935-15 | Amati BC Portable Station w/ locking industrial casters, breadboard, recessed bottle well, & tool holders; lower storage has tip-out door. 15"W x 15"D x 37"H |
| 955 | 624-20 | Alta Portable Station w/ locking industrial casters, drawer, and storage cabinet w/ adjustable shelf. 20"W x 16"D x 39"H |
| 1017 | 6605-20 | Kurve Portable Station w/ Tambour Door, locking industrial casters, shear drawer, pull-out tool panel w/ bottle well, & lower storage drawer. 20"W x 21.5"D x 41"H |
| 1018 | 6606-20 | Kurve Portable Station w/ Tambour Door, locking industrial casters, shear drawer, pull-out tool panel w/ bottle well & fabricated steel chassis. 20"W x 21.5"D x 41"H |
| 946 | 513-18-3 | MC Portable Styling Station w/ ceramic tile inset, drawers & cabinet, breadboard, tool holders, plus holders for 14 Marcel tools & 2 hot combs. 18"W x 16"D x 36"H |
| 977 | 880-20 | Tano Portable Work Station w/ breadboard, shear drawer, two deep drawers, tilt-out tool panel w/ power strip. 20.5"W x 20.5"D x 36"H |
| 1009 | 970-30 | Keri Kustom Portable Station w/ locking industrial casters, large work surface, two drawers, storage cabinet, & tip-out tool panel. 32"W x 16.5"D x 37"H |



977 • 880-20

*Fully Equipped
Tilt-Out Tool Panel*



1009 • 970-30



Vanities



947 • 580-15



Salon Couture
Elgin, Illinois



969 • 864-24



Moda
Windsor Heights, Iowa

- | | | |
|-----|--------|--|
| 947 | 580-15 | Caruso Styling Island, free-standing, finished on all sides, w/ pull-out breadboard, shear drawer, two drawers, tip-out tool panel. 15"W x 15"D x 39"H |
| 969 | 864-24 | Raggio Styling Island, free-standing, with pull-out breadboard, two utility drawers, & tilt-out tool panel. Unit has stainless steel work surface and cast aluminum legs. 25"W x 19"D x 42"H |
| 957 | 626-20 | Alta Free-Standing Vanity w/ drawer & storage cabinet w/ adjustable shelf. 20"W x 16"D x 39"H |
| 988 | 902-15 | Cambridge Custom Styling Vanity w/ three upper drawers, lower tool drawer, cast aluminum legs, & elevated frosted glass work surface. 15"W x 18"D x 39"H |
| 967 | 860-24 | Vanelle Styling Station w/ durable stainless steel work surface, two drawers, tilt-out tool panel, black accent. 25"W x 19"D x 42"H |
| 997 | 936-15 | Amati FS Styling Vanity, free-standing, Amati-Steel legs, three drawers & tip-out tool panel. Not available as a portable. 15"W x 15"D x 42"H |



957 • 626-20



988 • 902-15



967 • 860-24



997 • 936-15

Mirrors

All mirrors are 1/4" & come with polished edges & mounting hardware

Item # • Mirror Size

- 1160 • 24X36
- 1161 • 24X48
- 1162 • 30X42
- 1163 • 30X48
- 1164 • 36X36
- 1165 • 36X42
- 1166 • 36X48
- 1167 • 36X54
- 1168 • 36X60
- 1169 • 36X66
- 1170 • 36X72



1010 • 4516-BB Neo Deluxe Portable Station
40"H w/ pull-out breadboard, two drawers, cabinet w/ adj shelf, blow dryer holder, flat iron holder, two curling iron holders, clipper pocket, power strip, casters, finished back, & bar pulls. 24"W x 16"D x 40"H



Kurve

1014 • 6602-33



1014 • 6602-33



*gray celsius
accent mirror*

*azure colour
accent glass*

1013 • 6601-33



1018 • 6606-20



1017 • 6605-20



1019 • 6611-33



*All Kurve Stations come
Standard with LED lights.*

- 1013 6601-33 Kurve Wall-Mounted Mirror, ledge, and lower glass accent. 33"W x 8"D x 76"H
- 1019 6611-33 Kurve Wall-Mounted Full-Length Mirror. Install at 6" above floor. 33"W x 8"D x 76"H
- 1014 6602-33 Kurve Back-to-Back Mirror Island with etched glass or mirror bottom panel accent. 33"W x 20"D x 82"H
- 1015 6603-33 Kurve Formula Styling Station with etched glass or mirror bottom panel accent. Includes drawer, pull-out tool panel, cord drop, upper storage shelves, top-to-bottom wire chase, duplex outlet, & six-outlet power switch. 33"W X 20"D X 82"H
- 1016 6604-33 Kurve Back-to-Back Formula Styling Station with etched glass or mirror bottom panel accent. Includes two drawer, easy-access pull-out tool panel, cord drop, and upper storage shelves. Includes top-to-bottom wire chase, duplex outlet, six-outlet power switch 33"W X 39"D X 82"H
- 1017 6605-20 Kurve Portable Station with Tambour Door. 20"W x 21.5"D x 41"H See page 16 for more details.
- 1018 6606-20 Kurve Portable Station with Tambour Door & steel post. 20"W x 21.5"D x 41"H See page 16 for more details.

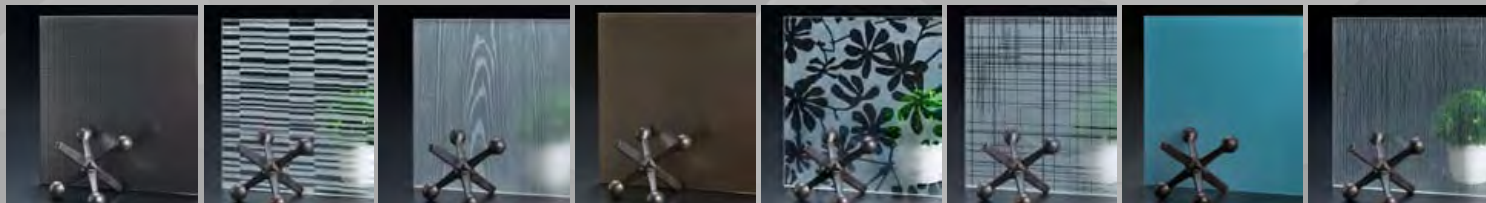
*Patterned surfaces create unique focal points that
captivate the eye and leave a lasting impression.*

Collins Kurve series is available (and shown) with an eco-friendly, smudge-resistant accent glass below the ledge. Choose from several different finishes: solid color, see-through pattern, colored mirror, standard mirror, or mirror pattern; ask your distributor for details or to see all patterns.

1016 • 6604-33



1015 • 6603-33



Leena

1042a • 6680-36 – Leena Styling Station

Right side features shear drawer, 4 utility drawers, tip-out tool panel w/ power strip, 3 storage shelves. Left side features mega-storage cabinet w/ two 36" tall doors, one 20" tall door, and four adjustable shelves. Includes 36" x 54" mirror and 30" x 4" tempered glass ledge. Measures 36"W x 14"D x 90"H + ledge.

1042b • 6681-36 – Leena Back-to-Back Styling Station

Each stylist has shear drawer, 4 utility drawers, tip-out tool panel w/ power strip, 3 storage shelves, 36" x 54" mirror and 30" x 4" tempered glass ledge. Measures 36"W x 18"D x 90"H + ledges.



961 • 632-70

1042a • 6680-36



767 • 7800S

736 • 7100H

Alta

The Leena features contemporary flair with supreme height



954 • 623-32

958 • 627-20



962 • 636-32



692 • 6700X



960 • 630-32



954 • 623-32

959 • 628-20

- 961 632-70 Alta B2B Vanity Styling Station for two stylists. 69.5"W x 16.25"D x 81"H
- 954 623-32 Alta Wall-Mounted Mirror & Ledge. 32"W x 75.5"H, installs 5.5" above the floor w/ french cleat. Includes 24x48 mirror, 24x28 Plexiglas panel, 6x32 ledge.
- 956 625-20 Alta Styling Vanity w/ drawer, quad electric, tip-out tool panel, storage cabinet.
- 958 627-20 Alta A-Tall Styling Station w/ Framed Full-Door. 15"W x 16.25"D x 78.5"H 623-32 Mirror panel ordered separately.
- 959 628-20 Alta B-Tall Styling Station w/ Framed Half-Door. 15"W x 16.25"D x 78.5"H 623-32 Mirror panel ordered separately.
- 960 630-32 Alta Formula Styling Station with two drawers, tip-out tool panel, & cabinet. Includes 24x48 mirror, Plexiglas accent, and ledge. 32"W x 16.5"D x 81"H
- 962 636-32 Alta B2B Formula Styling Station for two stylists. 30"W x 21"D x 81"H

Edge

*The Edge collection features
push-to-open & push-to-close hardware.*



1023 • 6621-32

1024 • 6622-18



1025 • 6623-62



1023 • 6621-32

1031 • 6630-18

836 • 9800X

- 1023 6621-32 Edge Full-Length Framed Mirror w/ T5 Lights. 32\"W x 5\"D x 82\"H
- 1024 6622-18 Edge Styling Vanity w/ tip-out tool panel, power strip, & two drawers. 18\"W x 15\"D x 40\"H
Pictured 6621-32 Edge Mirror is ordered separately.
- 1025 6623-62 Edge Back-to-Back Styling Vanity w/ Back-Lit Mirrors & 15\"W vanities. Each stylist has two
drawers, tip-out tool panel, & left-side storage w/ adj shelves. 62\"W x 21\"D x 40\"H x 82\"H
- 1026 6623-68 Edge Back-to-Back Styling Station, same as above but w/ 18\"W vanities - not pictured.
- 1027 6624-32 Edge Formula Styling Station w/ full-length back-lit mirror, two drawers, tip-out tool panel,
and both right & left side storage w/ adj shelves. Also includes top-to-bottom wire chase,
duplex outlet, light switch, and six-outlet power strips. 32\"W x 18\"D x 82\"H
- 1028 6625-32 Edge Formula Back-to-Back Styling Station. Two identical, fully equipped Edge styling
stations in a back-to-back configuration. 32\"W x 25\"D x 82\"H
- 1031 6630-18 Edge Styling Tower with tip-out tool panel, two drawers, and upper storage cabinet with
shelves. 18\"W x 16\"D x 80\"H Pictured 6621-32 Edge Mirror is ordered separately.



1027 • 6624-32



1028 • 6625-32

707 • 6800X

*Edge Formula Station: left side storage cabinets,
right side upper storage, tool holders & drawers.*

*Specify two contrasting laminates, as pictured,
at no additional charge for any Edge station.*

Zada



1035 • 6644-32



3" wide fascia



1036 • 6645-32



1036a • 6644-36

5" wide fascia



1032a • 6644-36



1035a • 6644-36

1032 • 6641-32

► (Left) Shown in custom color Sequin Satin Brushed Palladium, available for an upcharge. ►
► Backlit mirror is turned off in 5" wide fascia photos. ►



767 • 7800S



1033 • 6642-21

- 1032 6641-32 Zada Wall-Mounted frosted-border, LED-lighted framed mirror. Designed for installation 8" above finished floor. 32"W x 3"D x 72"H. Light switch by salon.
- 1032a 6641-36 Zada Wall-Mounted frosted-border, LED-lighted framed mirror. Same as 6641-32 above except 2" wider fascia of frame. Measures 36"W x 3"D x 76"H.
- 1033 6642-21 Zada Stainless Styling Vanity w/ oversized stainless steel work surface and powder-coated steel legs. Includes two drawers, storage cabinet w/ shelf, four-plex Electrical outlet wired by salon, fully-equipped tip-out tool panel. 21"W x 16"D x 36"H
- 1035 6644-32 Zada Formula Styling Station w/ frosted-border, LED-lighted framed mirror. Right side includes drawer, pull-out tool panel, light switch, duplex outlet, six-outlet power strip & upper storage. Left side features storage w/ 2 doors & adj shelves. 32"W x 16"D x 80"H
- 1035a 6644-36 Zada Formula Styling Station w/ frosted-border, LED-lighted framed mirror. Same as 6644-32 except 2" wider fascia of frame. 36"W x 16"D x 84"H
- 1036 6645-32 Zada Back-to-Back Formula Styling Station w/ frosted-border, LED-lighted framed mirror. Each stylist has brush drawer, pull-out tool panel, light switch, duplex outlet, six-outlet power strip & upper storage w/ adj shelf. Top-to-bottom wire-chase. 32"W x 21"D x 80"H
- 1036a 6645-36 Zada Back-to-Back Formula Styling Station w/ frosted-border, LED-lighted framed mirror. Same as 6645-32 except 2" wider fascia on frame. 36"W x 21"D x 84"H

Lox

Add additional lighting with a
Lox lighted station or mirror

1041 • 6675-36



1037 • 6671-36



1038 • 6672-36

- 1037 6671-36 Lox Wall-Mounted Mirror, 24"W ledge, installs 12" above floor. 36"W x 4"D x 66"H
- 1038 6672-36 Lox Wall-Mounted Mirror, no ledge, installs 12" above floor. 36"W x 4"D x 66"H
- 1039 6673-36 Lox Formula Styling Station, 24"W ledge, fully equipped. 36"W x 16"D x 78"H
- 1040 6674-36 Lox Formula Styling Station, no ledge, fully equipped. 36"W x 16"D x 78"H
- 1041 6675-36 Lox Back-to-Back Formula Styling Station, 24"W ledge, fully equipped for 2 stylists. 36"W x 24"D x 78"H
- 1042 6676-36 Lox Back-to-Back Formula Styling Station, no ledge, fully equipped for two stylists. 36"W x 24"D x 78"H



1039 • 6673-36

848 • 7900

Enova

The Enova collection features industrial-style rectangular steel accents and the Enova bar pull.



1007 • 964-66

716 • 69005



692 • 6700X

1006 • 963-18



1003 • 953-15

1055 • 951-48

1057 • 955-50

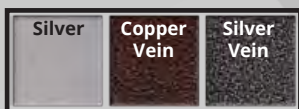


1005 • 962-30

1008 • 965-18



Custom Enova-Style Retail Units
Hair Zoo
Victor, New York



These metal finishes are available at no additional cost when ordering Enova & Amati equipment.

- | | | |
|------|--------|--|
| 1003 | 953-15 | Enova Premium Portable Station w/ deluxe locking casters, pull-out breadboard, two drawers, and tilt-out tool panel. 15.5"W x 15"D x 35"H |
| 1005 | 962-30 | Enova AR Mirror Assembly includes two tubular steel L-shaped supports, 30" x 48" mirror, and 30" x 8" x 3/8" tempered glass ledge. Installs on wall w/ screw cleat. |
| 1006 | 963-18 | Enova AR Styling Vanity w/ two rectangular steel sides, breadboard, two drawers, & fully-equipped tilt-out tool panel w/ power strip. 962-30 Mirror Assy ordered separately. 18"W x 15"D x 42"H |
| 1007 | 964-66 | Enova AR Styling Island, for two stylists, features two fully equipped 963-18 vanities & two back-to-back 962-30 mirror assemblies as pictured. 66"W x 28"D x 84"H |
| 1008 | 965-18 | Enova AR Tall Vanity w/ 4 rectangular-steel sides, 963-18 AR styling vanity, plus two glass retail shelves, and upper soffit with light. 18"W x 15"D x 84"H 962-30 Mirror Assy ordered separately. |
| 1055 | 951-48 | Enova Due Standing Reception Desk w/ Glass Customer Ledge, 48"W x 24"D x 42"H |
| 1057 | 955-50 | Enova Waiting Bench with Lumbar Back Support. 50"W x 20"D x 18"H x 28"H |

Amati



Randy Rix Hair Studio
Baltimore, Maryland

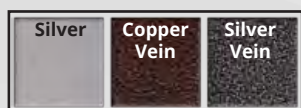
1001 • 941-66



755 •
7600S



1000 • 940-48



These metal finishes are available
at no additional cost when ordering
Enova & Amati equipment.

- 994 933-30 Amati Mirror Assembly, wall mounted, w/ twin 2" x 2" x 96" steel supports, ledge w/ modesty panel, & 30" x 48" mirror.
- 995 934-30 Amati Mirror Island w/ steel columns, ledges w/ modesty panels, & 30" x 48" mirrors. 30"W x 14"D x 96"H Wiring chase between mirrors, steel columns must be bolted to the floor.
- 996 935-15 Amati BC Portable Station w/ breadboard, tool holders on top, drawers, storage w/ tip-out door. 15"W x 15"D x 37"H
- 997 936-15 Amati FS Styling Vanity 15"W x 15"D x 42"H, finished on all sides, four Amati-steel legs, drawers & tip-out tool panel.
- 998 937-48 Amati Bi-Level Styling Vanity, 48"W, drawers, cabinet, & tilt-out tool panel. Includes Mirror. 30"W x 15"D x 24"H x 42"H
- 999 938-48 Amati Bi-Level Styling Vanity w/ retail, 48"W, drawers, cabinet, tilt-out tool panel, & mirror. 30"W x 15"D x 24"H x 80"H
- 1000 940-48 Amati Bi-Level Tall Styling Vanity w/ upper cabinet supported by 3 Amati-steel legs. 48"W x 15"D x 80"H.
- 1001 941-66 Amati Tall Styling Island includes two 940-48 vanities, & two 30" x 48" mirrors. Overall 66"W x 15"D x 80"H.
- 1002 942-36 Amati 360 Styling Station w/ rotating mirror assembly w/ three storage shelves. Measures 36"W x 15"D x 84"H

997 • 936-15



994 • 933-30



1002 • 942-36



995 • 934-30

996 • 935-15



999 • 938-48



998 • 937-48

Rio



951 • 607-32



952 • 608-30



948 • 604-32

Comfort Zone Mats p67



- 951 607-32 Rio Back-to-Back Styling Station for two stylists. Each stylist has mirror, 3/8" tempered glass ledge, pull-out tool cabinet w/ electric & cord storage, utility drawer, pull-out upper storage cabinet. Center wiring chase for electrical supply. 32"W x 18"D x 84"H
- 952 608-30 Rio Artistry Styling Station w/ 24" x 60" mirror & 3/8" tempered glass ledge. Right: shear drawer, tool panel, elec., & shelves. Left: 2 storage cabinets w/ shelves. 30"W x 15"D x 78"H
- 953 609-30 Rio Artistry Back-to-Back Styling Station for two stylists. Two identical 608-30 stations in a back-to-back configuration. 30"W x 30"D x 78"H *Not pictured.*
- 948 604-32 Rio Formula Styling Station w/ 24" x 48" mirror & 3/8" tempered glass ledge. Right: pull-out tool cabinet w/ electric & cord storage, shear drawer, pull-out upper storage cabinet. Left: two storage cabinets w/ adj shelves. 32"W x 16"D x 84"H. Installs on wall.
- 949 605-36 Rio Wall-Mounted Styling Station w/ 28" x 58" lighted mirror. Includes storage cabinet, quad electrical, holders for blow dryer, flat iron, and curling iron. 36"W x 8"D x 84"H & installs on wall, 6" above finished floor.
- 950 607-15 Rio Portable Styling Assistant w/ two drawers, storage cabinet, and heavy-duty locking casters. 15"W x 15"D x 36.5"H

Solista Salon Suites
Mount Sinai, New York

5200X Phenix

20-20 Square
Hydraulic Bases

6700X Quarta



5100X Fusion



9800X Taress



949 • 605-36



767 • 7800S



950 • 607-15

Vanelle

*Collins Equipment is Proudly
Made in the USA!*



968 • 861-40



967 • 860-24

- 967 860-24 Vanelle Styling Station w/ stainless steel work surface, 2 drawers, tilt-out tool panel, black accent. Specify toe-kick base or cast-aluminum legs at the time of order. 25"W x 19"D x 42"H
- 968 861-40 Vanelle Framed Mirror with brushed stainless metallic laminate & ledge. 40"W x 8"D x 53"H

Soho



965 • 801-48



966 • 802-66

Mid-Town



963 • 795-51



964 • 796-60

- 963 795-51 Mid-town Styling Station features a tapered cabinet, custom wall-mounted framed mirror, & angled ledge. Cabinet has 2 drawers, tool panel, power strip, elevated work surface. 51"W x 20"D x 93"H
- 964 796-60 Mid-town Two-Stylist Island. Two identical 795-51 stations in a back-to-back configuration. 60"W x 37"D x 93"H



- 965 801-48 Soho Styling Station w/ arched mirror, arched mirror panel, custom Soho-shaped ledge, cabinet w/ two drawers, fully-equipped tip-out tool panel. 48"W x 15"D x 93"H
- 966 802-66 Soho Two-Stylist Island. Two identical 801-48 Soho styling stations in back-to-back configuration. 66"W x 29"D x 93"H
- 987 901-15 Cambridge Single Stylist Station w/ two utility drawers, large tool drawer, power strip, aluminum legs. 15"W x 20"D x 39"H. Order wall-mounted mirror & glass ledge separately.
- 989 902-64 Cambridge Two-Stylists Island, complete w/ stainless steel columns, mirror frame, mirror, & ledge. 64"W x 36"D x 39"H
- 990 903-24 Cambridge radius frosted glass ledge w/ hardware. 24"W x 6"D
- 991 903-26 Cambridge Mirror Panel w/ custom mirror & stainless steel accent panel. 26"W x 80"H wall mounted w/ French cleat.
- 992 904-114 Cambridge Four-Stylist Island, complete w/ stainless steel columns, two back-to-back mirror frames, and four shaped mirrors. Each side has one extra vanity. 114"W x 36"D x 39"H

Cambridge

Islands feature dual cabinets & interchangeable tool panels, permitting each stylist to work either right or left handed.



992 • 904-114



989 • 902-64



991 • 903-26
990 • 903-24

987 • 901-15



8111 Chelsea Styler

Bradford Collection



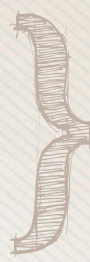
Sweeney Todd's Barbershop
Havertown, Pennsylvania



971 • 878-33



Available w/ open shelving
or cabinet doors.



985 • 895-36
984 • 894-34x44

Mirror can be
positioned to
the left or right
of tower.

993 • 910-20



714 • 6900

*10 Year Warranty
Barber Chairs, pages 48-51*



970 • 877-64



736 • 7100H



983 • 883-36



000 • B80



975 • 879-62

*More than a styling chair,
Not quite a barber chair...*

Collins Crossover Chairs



8070S
Metro Styler



8060S
Charger Styler

See Collins' QSE catalog for details
on the Metro and Charger Styling
and All-Purpose chairs



848 • 7900 Hackney Styler
see page 13 for details



*Bradford Reception
& Retail
on pages 43 & 45*

- | | | |
|-----|-----------|--|
| 971 | 878-33 | Bradford Tri-Station – Each stylist has breadboard, 2 drawers, tip-out tool panel, upper storage w/ adj shelves, ledge, & framed mirror. Each side is 33"W, overall 90"H. |
| 970 | 877-64 | Bradford Deluxe Tower Styling Station features single Queen Anne leg, crown/base/ accent molding, mirror, wall panel, ledge, canopy with lights, 270° door hinges, pull-out breadboard, shear drawer, utility drawer, & tip-out tool panel. 64"W x 20"D x 90"H |
| 983 | 883-36 | Shaker Bradford 2 Stylist Island – Each side has 2 drawers, tip-out tool panel, mirror, ledge, glass shelves, & light. Wiring chase should be hard-wired on site. 36"W x 18"D x 90"H |
| 993 | 910-20 | Bradford Tower-Only Station w/ crown & accent molding, breadboard, shear drawer, utility drawer, & tip-out tool panel. Upper half can be open retail w/ glass shelves or closed cabinet w/ shelves. 20"W x 18"D x 90"H Ledge & mirror ordered separately. |
| 984 | 894-34x44 | Bradford Tower Framed Mirror, antique gold. |
| 985 | 895-36 | Bradford Wall-Mounted ledge w/ matching crown molding |
| 975 | 879-62 | Bradford Barber Styling Station w/ accent molding & framed mirror. Can be ordered with a shampoo bowl set in the cabinet in lieu of center drawers. 61.5"W x 18" D x 42"H |



982 • 881-46



*Rejuvenations on the Reef
Key Largo, Florida*

*Looking for Timeless
& Elegant Styling?
Turn to the Bradford Collection.*



986 • 896-66



980 • 881-36

984 • 894-34x44



*Salon Avalon
Shakopee, Minnesota*



667 • 55005



979 • 881-34

Proudly Made in the USA!



978 • 881-30

674 • 5900



981 • 881-42

774 • 8101



737 • 71005



Comfort Zone Mats for

*Mirror rotates 360°
to reveal a Lazy Susan
storage compartment!*



- 986 896-66 Bradford Twin Vanity w/ Queen Anne legs, mirror, and moulded ledge. 66"W x 18"D x 36"H (ledge) x 42"H (vanities)
- 981 881-42 Bradford II Styling Vanity w/ breadboard & two drawers. Right of mirror is tool cabinet w/ power strip, left of mirror is storage cabinet. 42"W x 12"D x 76"H
- 982 881-46 Bradford II Two Stylist Vanity. Two 881-42 back-to-back vanities w/ four legs. 46"W x 26"D x 78"H
- 980 881-36 Bradford Console Styling Station, wall mounted station w/ breadboard, two drawers, tip-out tool panel w/ power strip. 36"W x 15"D x 37"H *Mirror ordered separately.*
- 984 894-34x44 Bradford Framed Mirror mounts to wall w/ french cleat. Specify Gold or Pewter. 34"W x 44"H
- 978 881-30 Bradford Styling Vanity w/ breadboard & two drawers. Right of mirror is tool cabinet w/ six-outlet power strip. 30"W x 16"D x 72"H
- 979 881-34 Bradford Two Stylist Vanity. Two 881-30 back-to-back vanities w/ four legs. 34"W x 26"D x 72"H

Bradford Collection

Does your location have traditional or classic architectural elements on which you want to build?

Consider the Bradford Collection, with details like dentil and crown molding, Queen Anne legs, and classic styling.



973 • 879-54

808 • 9110



976 • 879-72



864 • B20



974 • 879-54-4
(T100 Option)



778 • 8111V

- 976 879-72 Classically-styled Bradford Deluxe Dentil barber station includes CB80 porcelain bowl, fixtures, vacuum breaker, & diverter spout. Includes Bradford framed mirror and crown/dentil/accent/base molding.
- 973 879-54 Bradford Wet Booth Vanity with Queen Ann legs, crown molding, mirror, & light (wired on site), lift-lid, concealed bottle well, tool panel & 3 drawers on right, generous storage w/ shelves on left side. Opens to front. Bowl ordered separately. 52"W x 15"D x 72"H
- 974 879-54-4 Same as above but with the T100 tilting porcelain bowl that tilts to accommodate a wider range of clients. 54"W x 27"D x 75"H
- 1087 897-28 Bradford Backwash Cabinet w/ waterfall front & cultured marble bowl, fixtures, vacuum breaker, rear access doors. Each unit measures 28"W x 15"D x 35"H, & there are 3 in the pictured unit.
- 1086 897-16 Bradford Tower Shampoo Storage Cabinet w/ crown molding. Both open and closed storage on the back. Each tower measures 16"W x 16"D x 90"H, and there are two in the pictured unit.



1087 • 897-28 (x3) +
1086 • 897-16 (x2)



Collins Equipment is Proudly
Made in the USA!



All the Buzz Salon
Germantown, Illinois



Truefitt & Hill
Baku, Azerbaijan



860 • 9040BX2



1049 • 908-60



1050 • 911-30

Coordinating Task Chairs



688 • 6540



758 • 7640



813 • 9140



1048 • 887-60



1051 • 913-66



1047 • 885-42



1108 • 886-48-4



1111 • 916-48



1046 • 807-212

- 860 9040BX2 Twin Bradford Shoe Shine Stand features two padded seats, four locking drawers, & polished cast-aluminum foot supports. Foot supports can be removed for storage & safer/easier entry/exit. 78"W x 47"D x 54"H
- 858 9040 Same as above but for one client. 46"W x 48"D x 54"H
- 1049 908-60 Bradford Retail Display w/ locking storage in base, Queen Anne legs, adj glass shelves, 2 eyeball lights, crown molding. 60"W x 15"D x 78"H
- 1050 911-30 Bradford Free Standing Retail Display w/ three adj glass shelves, light, crown & accent molding, four Queen Anne legs. 30"W x 24"D x 84"H
- 1048 887-60 Bradford Reception Desk has crown/accnt molding& six Queen Anne legs, locking cash drawer, utility drawer, & two storage cabinets. Pictured desk measures 60"W x 25"D x 43"H & is also available in a 72" width.
- 1051 913-66 Bradford L-shaped Reception Desk w/ Queen Ann legs, crown/accnt molding, 3 drawers & 3 storage cabinets. 66"W x 60"W x 25"D x 43"H
- 1046 807-212 Bradford Double Reception Desk w/ Queen Anne legs, raised panels, moldings, & real wood carvings. 72"W x 68"W x 72"W x 30"D x 46"H
- 1047 885-42 Bradford Concierge Desk w/ raised panels on front & sides, locking cash drawer, and cabinet storage. 42"W x 24"D x 36"H x 42"H
- 1108 886-48-4 Bradford Manicure Table w/ optional claw & ball legs and dentil molding, plus three drawers, black lamp, & padded rest. 48"W x 20"D x 30"H
- 1111 916-48 Bradford Private Room Vanity w/ round stainless steel sink, paddle fixtures, drawers, cabinet. Includes 3" backsplash. 48"W x 24"D x 36"H



Urban Barber • Pleasanton, CA



Studio Six5 • Solana Preserve Vintage Park • Houston, TX



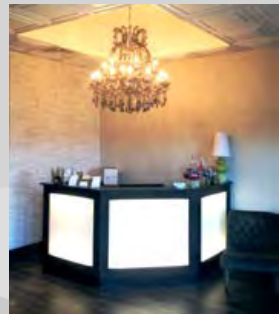
Salon Loft, Look Style Society
Las Vegas, NV



The Spa & Salon at River Valley Club
Lebanon, NH



Solista Salon Suites • Mount Sinai, NY



Studio J Salon
Richmond, KY



Scissors & Scotch • Des Moines, IA



Centre Salon & Spa • Westminster, CO



Essie Nail Lounge, Look Style Society • Las Vegas, NV



Studio Six5 • Tribute at the Glen • Woodbridge, VA



The Barbers • Spokane, WA



Moda • Windsor Heights, IA



The Spa & Salon at River Valley Club • Lebanon, NH



Salons by JC • Mt. Juliet, TN



Conley Designs • Bickford of Spotsylvania • Fredericksburg VA



Studio Six5 • Beach House, Asst. Living & Memory Care • Jacksonville Beach, FL



Studio One Salon • Rochester, MI



Gould's Salon Spa • Downtown Memphis, TN



Ro's Corner Barber Shop • Fayetteville, NC



Darren & Co. • Cincinnati, OH



The Spa & Salon at River Valley Club
Lebanon, NH



www.CollinsMfgCo.com



Razors and Blades • Danvers, MA



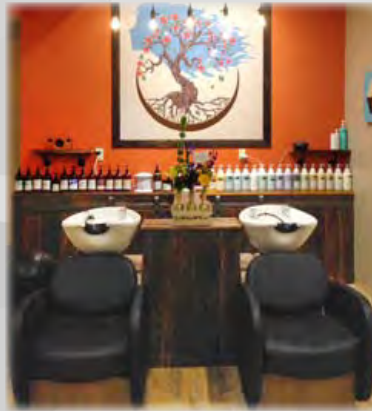
Solista Suites, Hairology • Mount Sinai, NY



Studio Six5 • Village at Stonebridge • McKinney, TX



Blowout Bar, Look Style Society • Las Vegas, NV



Root Down Hair Studio • Banner Elk, NC



Warner Designs • Sacramento, CA



Roots Salon • Brookfield, WI



Savvy Salon & Day Spa • Cornelius, NC



Studio Six5 • Village at Stonebridge • McKinney, TX



*Salon Jaylee Southern Trace
The Villages, FL*



Blow Dry at the Beach • Old Saybrook, CT



Truefitt & Hill • Seoul, Korea



Studio Six5 • Cottonwood Place Assisted Living • Holladay, UT



Arz Salon • North Ridgeville, OH



Solista Salon Suites • Mount Sinai, NY



Solista Suites, Hairology • Mount Sinai, NY



Hair n There • Great Falls, MT



Studio J Salon • Richmond, KY



Mosaic Hair Studio & Blowout Bar • Orlando, FL



PB Cosmetology School • Gloucester, NJ



The Hair Loft Salon & Suites • Cape Girardeau, MO



The Spa & Salon at River Valley Club
Lebanon, NH



Studio Six5 • The Solana Deer Park
Deer Park, IL

Shampoo Shuttles



612 • 22BWS



751 • 72BWS



751 • 72BWS



923 • A100

Premium Shampoo Shuttles

In addition to the premium designer arms, the ATL & NYC shuttles feature our premium CB86 porcelain bowl with comfortable neck-line and a 6" tilt-range, seat assembly with 6" front-to-back adjustment, and a pivoting back-cushion for lumbar support. Both Premium Shuttles can be ordered as a backwash, a sidewash, or an Add-On.

All Collins Tilting Porcelain Bowls include 570 faucet, 388 vacuum breaker, spray hose, strainer assembly, 18" flexible tail-stock, and durable tilt-mechanism.



Heat Blowdry Bar & Wax Studio • Mankato, MN



614 • 24BWS



ADA Friendly Shuttle



Leslie Lounge Shuttle

The Leslie Lounge Shuttle Shampoo combines the comfort of a lounge chair with the benefits of a tilting shampoo bowl. Like all Collins Shuttles, the Leslie Lounge has a pivoting back-cushion for lumbar support, & adjusts 6" front-to-back and locks in place. To provide adequate room for comfortable entry-exit, Collins recommends installation on 42" centers.

751	72BWS	ATL Backwash Shuttle w/ CB86 or CB87 Tilting Porcelain Bowl
752	72AOS	ATL Add-On-Shuttle w/ CB86 or CB87 Tilting Porcelain Bowl
612	22BWS	NYC Backwash Shuttle w/ CB86 or CB87 Tilting Porcelain Bowl
613	22AOS	NYC Add-On-Shuttle w/ CB86 or CB87 Tilting Porcelain Bowl
614	24BWS	Leslie Lounge Backwash Shuttle w/ CB86 or CB87 Tilting Porcelain Bowl
615	24AOS	Leslie Lounge Add-On-Shuttle w/ CB86 or CB87 Tilting Porcelain Bowl

Add-On Shuttle



727 • 69AOS

Plumbing Chase



922 • BWSC

Collins Add-On Shuttles (AOS) enable an easy upgrade to any shampoo area. Use your existing plumbing & simply replace your old sidewash bowl w/ an AOS. **Every BWS model is available as an AOS & comes w/ a pivoting back cushion for lumbar support, premium CB82 porcelain tilting bowl, & seat with 6" front-to-back travel.**

Order a plumbing chase (item BWSC) to link 2 or 3 shuttles together. Plumbing chase can also be used to connect a backwash shuttle to plumbing that comes out from the wall at the unit's side.



782 • 81BWS



703 • 67BWS



742 • 71BWS



831 • 97BWS



772 • 78BWS



759 • 76BWS



712 • 68BWS



726 • 69BWS



642 • 37BWS



791 • 83BWS



846 • 98BWS



814 • 91BWS



616 • 2415

Ottoman sold separately.

Just 22" Deep – Perfect for stylists with a shorter reach!



920 • CB86

Collins Tilting Backwash Porcelain Bowl

Available in Black & White. 20"W x 22"D x 11"H



921 • CB87

Collins Large Tilting Backwash Porcelain Bowl

Available in Black & White. 21"W x 24.5"D x 10"H

Mosaic Backwash Shuttles

782	81BWS	Chelsea Backwash Shuttle w/ CB86 Tilting Porcelain Bowl
703	67BWS	Quarta Backwash Shuttle w/ CB86 Tilting Porcelain Bowl
742	71BWS	Ashton Backwash Shuttle w/ CB86 Tilting Porcelain Bowl
831	97BWS	Vanelle SA Backwash Shuttle w/ CB86 Tilting Porcelain Bowl
772	78BWS	Aluma Backwash Shuttle w/ CB86 Tilting Porcelain Bowl
759	76BWS	Vittoria Backwash Shuttle w/ CB86 Tilting Porcelain Bowl
712	68BWS	Nouveau Backwash Shuttle w/ CB86 Tilting Porcelain Bowl

726	69BWS	Cigno Backwash Shuttle w/ CB86 Tilting Porcelain Bowl
642	37BWS	Cody Backwash Shuttle w/ CB86 Tilting Porcelain Bowl
791	83BWS	Milano Backwash Shuttle w/ CB86 Tilting Porcelain Bowl
846	98BWS	Taress Backwash Shuttle w/ CB86 Tilting Porcelain Bowl
814	91BWS	Silhouette SA Backwash Shuttle w/ CB86 Tilting Porcelain Bowl
616	2415	Ottoman w/ casters, 24L x 24W x 16H

Shampoo Cabinetry



1096b • 4452-45

12AOS Shown
Accommodates
any Collins AOS

The *Neo Shampoo Back-Bar* is available two ways:
(1) 4450-45 to accept the traditional wall-mounted shampoo bowl of your choice, or
(2) 4452-45 to accommodate any model of Collins Add-On Shuttle w/ CB82 Tilting Porcelain Bowl



1096a • 4450-45



Both versions of the Neo Shampoo Back Bar feature large overhead storage with adjustable shelves, large molded bottle well that holds 3 one-gallon containers, and a large soiled towel-bin with efficient and safe swinging door.



Reference 131090.3815

Custom Shampoo Banquette

Tonic Hair Salon
Belmont, California

Contact your distributor
to discuss custom equipment
made by Collins!

- | | | |
|-------|---------|--|
| 1096a | 4450-45 | NEO Shampoo Back-Bar to accommodate Face-Mounted Bowl |
| 1096b | 4452-45 | NEO Shampoo Back-Bar to accommodate Add-On Shuttle (any AOS) |
| 1077 | 638-42 | TSB 42" Side-Wash Shampoo w/ tilting porcelain bowl. 42"W x 18"D x 782"H |
| 630 | 3303 | Luxe Stationary Shampoo Lounge w/ Reclining Back |
| 1081 | 645-48 | Classic Shampoo Bulkhead. 48"W x 12"D x 72"H Bowl ordered separately. |
| 1096 | 4429-18 | NEO 78hi Tower Shampoo Assistant. 18"W x 16"D x 81"H |
| 1100 | 5944-32 | QSE Deluxe Backwash Shampoo w/ Tilting Porcelain Bowl. 32" W x 15"D x 27"H |
| 1097 | 5711-32 | European Two-Bowl Backwash w/ Cultured Marble Bowls. 60"W x 17"D x 35"H |
| 1098 | 5711-60 | European Backwash Shampoo w/ Cultured Marble Bowl. 32"W x 17"D x 35"H |

1077 • 638-42



630 • 3303



1081 • 645-48



1096 • 4429-18



1100 • 5944-32



1098 • 5711-60



1097 • 5711-32

1850L Shampoo Chair

Spa Collection

*Featured is a sampling of our spa designs.
Call your distributor about custom spa equipment!*



1115 • 927-48



Salon Jaylee
The Villages, Florida



1116 • 927-60



1113 • 927-30



1124 • 4434-18



1114 • 927-32



1111 • 916-48



631 • 3306



1112 • 917-30

1121 • 4360V – The Redman Makeup Station by Veeco features all stainless steel construction, two Hollywood light bars & is accented w/ your choice of Mosaic laminate.

This makeup station features tool holders plus a bottle well under the center mirror. Each side of the unit comes with tissue dispenser slot & four glass jars; the left deck includes a trash container. A six outlet 15 amp power strip is included. Bulbs not included.

The Redman makeup station may have a longer-than-average lead time. Inquire with your distributor.



- | | | |
|------|---------|--|
| 631 | 3306 | Luxe Hydraulic Facial Lounge w/ Lever-Control Reclining Back, Headrest & HD Hydraulic Base |
| 1113 | 927-30 | Corner Private Room Vanity w/ stainless steel sink. Base cabinet measures 42"W x 36"H. Upper cabinet w/ adjustable shelves measures 34"W x 30"H. |
| 1111 | 916-48 | Bradford Private Room Vanity with round stainless steel sink, paddle fixtures, two drawers, storage cabinet & 3" backsplash. 48"W x 24"D x 36"H |
| 1114 | 927-32 | Small Private Room Vanity with stainless steel sink, paddle fixtures, two drawers, cabinet storage with adjustable shelf. 32"W x 21"D x 36"H |
| 1112 | 917-30 | Shaker Bradford Lockers feature 2 individual locking doors w/ 5 adjustable shelves behind each door. 30"W x 15"D x 80"H |
| 1115 | 927-48 | Grande Private Room Vanity w/ lockers, stainless steel sink, upper & lower storage cabinets, open shelves, 2 lockers on right w/ locks. 48"W x 21"D x 90"H |
| 1116 | 927-60 | Deluxe Spa Storage Cabinet w/ brushed-stainless laminate finish, custom pulls, adjustable shelves. 60"W x 15"D x 72"H |
| 1124 | 4434-18 | Neo Portable Make-Up Station with pull-out breadboard, eight full-extension drawers, and premium locking casters. 18"W x 16"D x 37"H |

Color Centers



1102 • 6612-96

QSE 1800V Styling Chair



1101 • 6611-96



904 • 1433H

1433H TempTura dryers can optionally be ordered to make this a Drying Island.

Galaxy Color Application Island w/ Lights – Free-standing, finished on all sides, includes Amati steel up-rights. Unit has four LED puck lights in soffit, four T5 under-counter lights, light switch, and top-to-bottom wire paths. Overhead soffit engineered to support one or two Collins #1464H Galaxy Color Processors (or equivalent) on each side of island. 96"L x 24"D x 84"H

Galaxy Color Application Bar is available for installation against the wall, #6611-96. Both units can be ordered without the under-counter lights. Color processors or dryers ordered separately.

*Mosaic cabinetry
is available in 49
laminate colors!
See pages 62-63.*

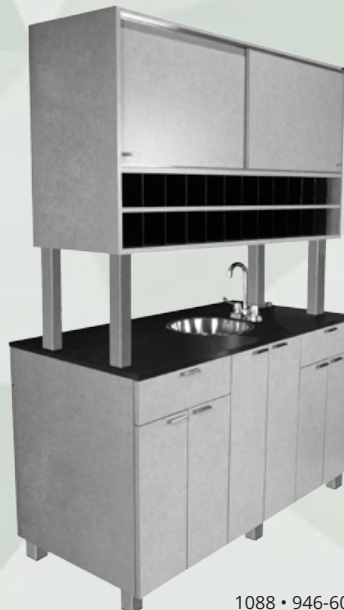


1078 • 639-54

- 1102 6612-96 Galaxy Color Application Island w/ Lights. 96"L x 24"D x 84"H Color processors or dryers ordered separately.
- 1101 6611-96 Galaxy Colour Application Bar to be installed against wall. 96"L x 16"D x 84"
- 1078 639-54 Alta Color Center w/ stainless steel sink, fixtures, two upper cabinets with 64 color cubbies (4"W x 3.25"H each), one upper cabinet w/ shelves, framed upper doors. Base cabinet has two drawers & three storage cabinets. 54"W X 21"D X 85"H
- 1091 3388-48 Cameo Color Bar w/ stainless steel sink, goose-neck faucet, color cubbies, overhead storage w/ sliding doors, two drawers, & storage cabinets. 48"W x 21"D x 79"H
- 1088 946-60 Amati Color Island, free-standing, accessible from all sides. Both sides have identical features: color cubbies, upper storage cabinet accessible from both sides via sliding doors, plus a lower cabinet w/ drawers, storage cabinets. 60"W x 30"D x 36"H x 80"H
- 1089 972-60 Enova Colorist Center Features four rectangular steel side supports & round stainless steel sink w/ goose-neck fixtures and color storage cubbies. 60"W x 21"D x 84"H

Neo Deluxe
Portable Station
1010 • 4516-BB900 • RT1830
Rectangular Salon Mat,
18" x 30" x 3/4"

**Tight Deadline? Look for
the Quick Ship Icon!**

Cameo Color Bar
1091 • 3388-48

1088 • 946-60



1089 • 972-60



1083 • 851-101 +
1084 • 852-101

*Professional Color Centers
are typically designed & built
to meet the specific needs &
preferences of the ordering salon.*



1083 • 851-101



Hair Illusions Salon
Tracy, California

*Custom sizes, colors, & styles
quoted upon request.*

*Contact your distributor to
discuss your custom color center!*

- | | | |
|------|---------|--|
| 1083 | 851-101 | Colour Pro Color Center features acrylic cubbies for color organization and easy-access, stainless steel work surface & backsplash, four large drawers w/ ball-bearing drawer slides & oversized pulls, stainless steel sink w/ goose-neck fixture, and ample storage cabinets w/ adj shelves. 101"W x 24"D x 90"H |
| 1084 | 852-101 | Colour Pro Upper Signage Section, w/ back-lit translucent Plexiglas (must be wired on-site by licensed electrician). Installs above 851-101 Colour-Pro Center. Salon applies their own logos, templates, & decals on site. 101"W x 7"D x 23"H |
| 1085 | 853-95 | Colour Pro Client Consultation Bar w/ angled display on customer side & under-cabinet storage on the back. Color samples and accessories beyond the millwork are selected & supplied by the distributor and/or salon. 95"W x 21"D x 46"H |
| 1103 | 110649 | Colour Pro Color Center w/ light rail & LED lights (specify color or white lights). Features acrylic cubbies, stainless steel work surface, laminated backsplash, 12 large HD drawers w/ ball-bearing drawer slides, and two trash-dispensers w/ flip doors. 96"W x 24"D x 90"H |



1103 • 110649

▲ This color bar includes
color-changing LED lights.



*Proudly Made
in the USA!*



1085 • 853-95



Salon Jaylee
The Villages, Florida

Manicure



1117 • 947-45



1108 • 886-48

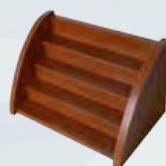


1120 • 974-54

*All nail tables include
padded wrist rest
& black lamp.*



*Design by Studio Six5
American House Coconut Point • Estero, Florida*



1122 • 4420-14
Neo Nail Polish Display



1118 • 948-57



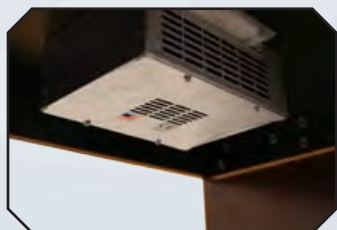
1119 • 973-48

- | | | |
|------|----------|--|
| 1108 | 886-48 | Bradford Nail Table w/ Queen Anne legs and molding, three drawers, black lamp, padded wrist rest. 48"W x 20"D x 30"H |
| 1109 | 886-48-4 | Bradford Dentil Nail Table - same table as 886-48, but w/ Claw & Ball legs & Dentil molding. |
| 1117 | 947-45 | Amati 45 Nail Table w/ two drawers, storage cabinet and Amati steel legs. Space-saving design measuring 45"W x 20"D x 30"H x 32"H. Can be ordered w/ locking twin-wheel casters. |
| 1118 | 948-57 | Amati 57 Nail Table w/ two drawers and two storage cabinets. 57"W x 20"D x 30"H x 32"H. Can be ordered w/ locking twin-wheel casters. |
| 1119 | 973-48 | Enova 48 Nail Table w/ steel-supported 3/8" tempered glass top, tubular steel legs, two drawers & storage cabinets. 48"W x 20"D x 30"H. <i>Optional vent not available.</i> |
| 1120 | 974-54 | Enova 54 Nail Table w/ recessed work surface, tall tubular-steel legs, three drawers, and storage cabinet. 54"W x 20"D x 30"H |
| 1123 | 4420-48 | NEO Manicure Table w/ three drawers, strong 4"W leg, 26"W chair well, 5 1/2" toe-kick base. 48"W x 20"D x 30"H |
| 1180 | 10633 | Optional Valentino powered vent system w/ charcoal filter ... available on most nail tables. |

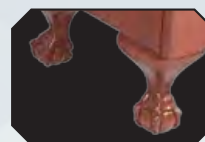
*Optional #10633
Valentino Powered Vent
w/ charcoal filter is available
on most nail tables.*

*Powered Vent System
by Valentino*

Proudly Made in the USA!



1123 • 4420-48 +
1180 • 10633



1109 • 886-48-4



Design by Studio Six5



1110 • 905-48



618 • 2501



1125 • 5728-48



1105 • 700-46



1107 • 804-48



1106 • 804-60

Ask About Custom
Collins Manicure Tables!



Essie Nail Lounge @ LOOK Style Society
Las Vegas, Nevada



6760

9760

More stools on pg 15



1760

1660

Ashton Club Pedi



- 618 2501 Chable, patented, chair & nail table combination w/ fold-away tabletop, padded rest, gas cylinder w/ 5" height adj., & casters.
- 1110 905-48 Cambridge Manicure Table with three drawers and cast aluminum legs. The gentle radius on front and back makes the Cambridge unique. 48"W x 24"D x 33"H
- 1105 700-46 Capri Manicure Table with four drawers & casters. Very popular style. 46"W x 17"D x 30"H
- 1125 5728-48 Fifth Ave Nail Table w/ three drawers, lamp, padded rest. 48"W x 21"D x 30"H x 33"H
- 1107 804-48 Soho "Studio" Nail Table has three drawers and casters. Designed for salons with limited space. 48"W x 19"D x 30"H
- 1106 804-60 Soho "Loft" Nail Table has three drawers, storage cabinet with adjustable shelf, and casters. 60"W x 19"D x 30"H

- 623 2513 Club Pedicure Ottoman w/ drawer & casters. 16" cubed.
- 627 2565 Club Pedicure Ashton Chair w/ Free Footsie Bath.
- 10824 Optional Three-Zone Massage & Lumbar Heat
- 628 120TC Footsie Bath Foot Spa w/ heat, vibration, & 10 liners.
- 629 R001 Footsie Bath Disposable Liners, package of 100 liners

Overall 28"W x 28"D x 22"H x 37"H, measures 22" from floor to seat cushion, & 22" between the arms. Pull-out for foot spa extends an additional 20" from front of chair.

Pedicure

Items with this symbol can ship in just 2-3 weeks if selected in a QSE laminate or vinyl color.



622 • 2510



1127 • 4438P



*Chez Ann Salon & Day Spa
Designer: Carmina Wood Morris
Williamsville, New York*



1128 • 4440P



1126 • 4436P

- 1127 4438P Kelsey Pipeless Pedicure Unit w/ black radius-front 12" deep acrylic whirlpool tub. 48"W x 52"D x 42"H
- 622 2510 QSE Pedi-Stool with seat and back cushion, two drawers, casters.
- 1128 4440P Ashton Pipeless Pedicure Unit w/ black radius-front 12" deep acrylic whirlpool tub. 43"W x 52"D
- 1126 4436P Cigno Pipeless Pedicure Unit w/ black radius-front 12" deep acrylic whirlpool tub. 43"W x 52"D
- 1129 4913P Bradford Bench Pipeless Pedicure Center with black radius-front 12" deep acrylic whirlpool tub. Measures 48"W x 50"D x 48"H

Collins Pipeless Pedicure Units

Five different styles of Pipeless Pedicure, each w/ deep radius-front basin of durable Dupont Acrylic. Includes whirlpool action via removable & replaceable magnet-driven impeller, creating the desired effect without external pipes or pumps. Sanitary, easy to clean, & easy to maintain.



000 • 4913P



*Custom Commander Pedicure Units
Truefitt & Hill
Baku, Azerbaijan*



*Spa at Stein Eriksen Lodge
Park City, Utah*



1131 • PPA-6



621 • 2508



620 • 2507



1130 • 62478

- 620 2507 Low Profile Pedi Stool w/ gas cylinder, casters.
- 621 2508 Pedi Stool w/ seat cushion only, drawer, casters.
- 622 2510 QSE Pedi-Stool with seat & back cushion, two drawers, casters
- 1131 PPA-6 Portable Pedicure Asst w/ breadboard pull-out, 2 drawers, locking casters & product retention rails on 3 sides. 18"W x 24"D x 20"H
- 1130 62478 Cielo Triple-Basin pipeless Pedicure Bench w/ white radius-front 12" deep acrylic whirlpool tub



The Hair Loft Salon & Suites
Cape Girardeau, Missouri

Reception Seating



710 • 6825
Shown in COM



724 • 6960



629a • 2570



1058 • 956-50



1057 • 955-50

1056 • 955-18



722 • 6925



741 • 7125



600 • 1051

- 1058 956-50 Enova Reception Bench w/o lumbar back support. Shown w/ custom-ordered wall-mounted back cushions.
- 1057 955-50 Enova Waiting Bench w/ Lumbar Back Support
- 1056 955-18 Enova Casual Table w/ Legs
- 710 6825 Nouveau Reception Area Chair w/ 2x2 Legs
- 724 6960 Bradford Cigno Reception Chair w/ Queen Anne legs
- 629a 2570 Lisbon Reception Chair
- 722 6925 Cigno Reception Area Chair
- 741 7125 Ashton Premium Reception Area Chair
- 600 1051 Ashe Waiting Chair, Imported
- 606 1975 Lanai Reception Chair w/ toe-kick base
- 607 1980 Lanai Reception Chair w/ four chrome legs
- 609 1985 Lanai Reception Chair w/ extended back
- 610 1986 Lanai Reception Love Seat 54"W w/ extended back



Michael's Unique Styles
Charleston, West Virginia



See pages 15 & 41

Club Pedis Double as
Reception Seating!



607 • 1980



606 • 1975



609 • 1985



610 • 1986

Proudly Made in the USA!

Retail w/ Lights



1068 • 6650-32

Hair Illusions Salon
Tracy, California

Zada Backlit x2 Side-by-Side

*What does your
retail display say
about the quality
of your products?*

The Spa & Salon at
River Valley Club
Lebanon, New Hampshire

1069 • 6677-48



1064 • 6646-16

- 1064 6646-16 Zada retail light box pedestals beautifully highlight your retail products. Set of three units are 30", 36", & 42" tall x 16"W x 16"D.
- 1068 6650-32 The Zada Backlit Retail Display has strong, 3/8" tempered glass shelves. Two cabinets in the base provide storage for additional inventory. 32"W x 18"D x 84"H
- 1065 6647-32 Zada Stacked Retail Display w/ lights & lower storage. Shelf heights are 18", 31", & 44". Top of display has a 12"x12" light box to highlight product. Light switch inside bottom cabinet. 32"W x 32"D x 54"H
- 1069 6677-48 Lox retail unit w/ Back-Lit Logo Header, T5 down-lighting over each shelf, & two lower storage cabinets. 48"W x 18"D x 84"H.
- 1067 6649-32 Zada retail unit with T5 lights & lower storage cabinet. Each unit is 32"W x 18"D x 80"H. Also shown are two units back-to-back & side-by-side.



1065 • 6647-32

12"x12" light box
on top of 6647-32.

Zada Retail x2 Back-to-Back



Zada Retail x2 Side-by-Side



1067 • 6649-32

- 1066 • 6648-48
Set of 3 Zada Nesting Tables measures:
• 48"W x 36"H x 15"D
• 42"W x 30"H x 15"D
• 36"W x 24"H x 15"D



The Rio Retail Display pairs perfectly with the 605-36 Rio Styling Station.



Solista Salon Suites
Mt. Sinai, New York



Adjustable Glass Shelf Detail



1044 • 603-32

Retail Shelving



1058a • 4419-48



1054 • 932-24 x2

- 1066 6648-48 Zada Nesting Tables, set of 3, highlights specials in your retail area. Set of three tables measures: 48"W x 36"H x 15"D, 42"W x 30"H x 15"D, and 36"W x 24"H x 15"D
- 1058a 4419-48 Neo Retail Display, as pictured, w/ base cabinet & upper display. Unit has four 10" deep adjustable glass shelves, wiring chase. Free standing, finished on all sides. 48"W x 16"D x 78"H
- 1054 932-24 Amati Retail Display w/ eight adjustable 21"x12" glass shelves, soffit, & base storage cabinet w/ two doors. Pictured are two 24" wide units measuring 48"W. Installs against the wall.
- 1044 603-32 Rio Retail Display Shelf w/ four 3/8" tempered glass shelves & product spotlight pedestal. Installs on or against the wall. 32"W x 8"D x 74"H plus a 6" toekick.
- 1063 6629-24 Edge Retail Unit w/ four adjustable 21"x12" glass shelves & a lower push-to-open storage drawer. Specify two contrasting laminates at no additional cost. 24"W x 15"D x 84"H

Edge push-to-open equipment can be found on page 22.



1063 • 6629-24



1049 • 908-60



1052 • 911-60



1050 • 911-30



1049a • 909-60

Additional
Bradford pieces
on pages 26 - 29

- 1049 908-60 Bradford Retail Display w/ locking storage in base. Includes Queen Anne legs, adj. glass shelves, two eyeball lights, and crown molding. 60"W x 15"D x 78"H
- 1052 911-60 Bradford Free-Standing Retail Display w/ six adj. glass shelves, two lights, crown & accent molding, four Queen Anne legs. 60"W x 24"D x 84"H
- 1050 911-30 Bradford Free-Standing Retail Display w/ three adj. glass shelves, light, crown & accent molding, four Queen Anne legs. 30"W x 24"D x 84"H
- 1049a 909-60 Bradford Free-Standing Retail Display w/ base cabinets, adj. shelves, lights, crown & accent molding, four Queen Anne legs. 60"W x 15"D x 84"H

Proudly Made
in the USA!

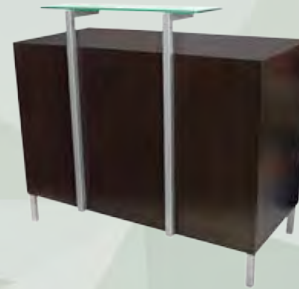
Standing Reception Desks



1075 • 115183 Special-Order Amati Standing Reception Desk w/ elevated customer ledge, steel legs, & left-side return. Four drawers, two storage cabinets, plus bag-storage shelves. 87"W x 24"D x 34"D x 36"H x 42"H



Darren & Co. Salon
Cincinnati, Ohio



1074 • 111203 Special-Order Standing Reception Desk w/ elevated customer ledge, custom provisions for computers, printers, computer screens, and keyboards. Locking drawers & retail bag storage. 72"W x 36"D x 36"H x 45"H

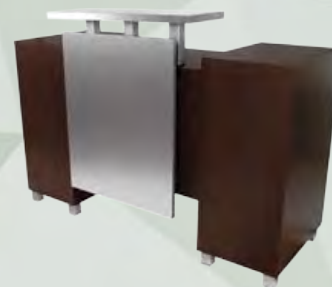
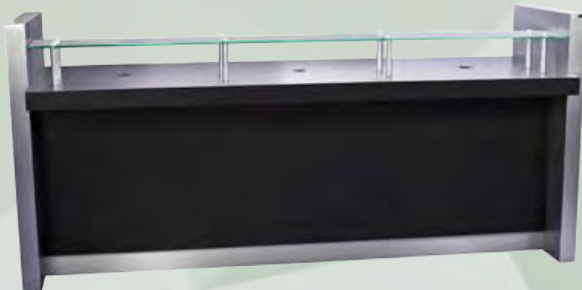
*What does your Reception Area
Say about your Salon?*

1055 • 951-48 Enova Due Standing Desk, tubular-steel legs, and 30"W x 8"D x 3/8" tempered glass customer ledge supported by matching tubular-steel. Locking drawer w/ cash till, two drawers, three cabinets. 48"W x 24"D x 42"H



1073 • 110660 Special-Order Standing Reception Desk w/ dramatic T5 back-lit front. Four drawers, four locking file drawers, adjustable shelves. 93"W x 35"D x 37"H x 47"H

1059 • 6607-33 Kurve Concierge Desk with etched glass accent panel & tapered aluminum legs. Includes pull-out keyboard & lower computer cabinet. 33"W x 31"D x 42"H



1070 • 6679-96 Lox 8' Standing Reception Desk w/ ADA customer ledge, brushed steel stand-offs support the tempered-glass customer ledge, & T5 down-lights dramatize the desk-front. Wire grommets, wire paths, & storage cabinets w/ adj shelves. 96"W x 33"D x 34"H x 44"H

1052 • 930-60 Amati Amico Desk with steel-supported customer ledge and floating front accent panel. Features locking drawer w/ cash till, utility drawer, storage cabinets w/ adj shelves, recess for electronic cash drawer or pull-out keyboard tray. 60"W x 26"D x 44"H

Seated Reception Desks



1072 • 103061 Special-Order Three-Sided Reception Desk w/ Dramatic T5 Back-Lit Front. Keyboard tray, utility drawer, two hanging-file drawers, & retail bag storage. Front is 40"W x 45"W x 40"W, back is 25" D X 30"H x 44"H. Desk has 6' x 6' footprint.



Studio J Salon Spa & Boutique
Richmond, Kentucky



1061 • 6627-36 Edge Standing Reception Desk with two push-to-open drawers, locking cash till, wire grommets, and lower shelf for computer or purse. 36"W x 24"D x 44"H

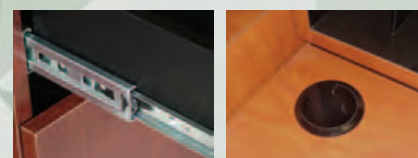
*Collins Desks are
Made in the USA!*



1043 • 578-48 Mid-town Reception Desk w/ cast aluminum legs and tapered geometric overlay, drawer, cabinet, keyboard tray. 48"W x 24"D x 42"H. Formerly model 862-48.



1053 • 931-74 Amati Galileo Desk featuring Amati-Steel legs, suspended modesty panel, & sharp geometric styling. Includes locking drawer w/ cash till, utility drawer, two storage cabinets, pull-out keyboard tray, & ample work surface. 74"W x 24"D x 42"H.



Reception Desk Details
Drawer slides, grommet for wires



1045 • 620-60 Alta Reception Desk w/ geometric front, wrapped customer ledge, keyboard tray, computer shelf, two drawers, two storage cabinets. 60"W x 25"D x 44"H. Can be ordered with one, two, or three standard laminates at added cost.



Empire Beauty School

Talk with your Distributor today about a Custom Desk!



The Barbers Barbershop • Eugene, OR

B10 Commander *Premium*



Free headrest storage bracket; installs on back of cabinet or closet door.



B Series Features

- Gas Cylinder Controlled Reclining Back Cushion
- Right and Left Handed Controls for Back Recline
- Adjustable/Removable Push Button Headrest
- Cast Aluminum Footrest Works In-Sync with Back Recline
- Cast Aluminum Footrest and Roll-Over Calf Pad
- Foot-Operated Heavy Duty Hydraulic Base
- 27" diameter, 10 Gauge Steel Baseplate
- Durable Powder Coated, Fabricated Steel Frame
- 8 Sets of Ball-Bearings for Long Life & Smooth Operation
- Steel Reinforced Red Oak, Hard Maple, or Powder Coated Cast Aluminum Arms with Padded Upholstered Rests
- Quilted Upholstery with Premium 36 oz. Expanded Vinyl
- Choose ANY Spirit, Burkshire, or Olympus Upholstery



Collins has taken their 10 year, best-selling Commander barber chair to a whole new level. The B10 Commander Premium has the same world-class styling as the original Commander but was re-engineered to carry a ten year/100,000 haircut warranty.

The B10 Commander Premium barber chair (pictured above) is equipped with the original Collins logo footrest. Alternatively, the B60 Commander Supreme barber chair (pictured left) is equipped with the B series cast aluminum footrest and roll-over calf pad.

B60 Commander



Supreme

- | | | |
|------|-----|--|
| 863 | B10 | Commander Premium w/ Maple arms, black logo footrest, Chrome HD Base |
| 864 | B20 | Cavalier w/ Red Oak Arms & Chrome Heavy Duty Base |
| 865 | B30 | Bristol w/ Silver Arms & Silver Heavy Duty Base |
| 866 | B40 | Cobalt w/ Silver Arms & Silver Heavy Duty Base |
| 867 | B50 | Caliber w/ Silver-Vein Arms & Heavy Duty Silver Vein Base |
| 868 | B60 | Commander Supreme w/ Maple arms, Roll-over Calf Pad, Chrome HD Base |
| 869 | B70 | Cobalt Omega w/ Silver Arms, Polished Arm Endcaps, Silver HD Base |
| 869a | B80 | Ambassador w/ Red Oak Arms, Premium Button-tufting, & Chrome HD Base |

B80 Ambassador



B Series Specs

- 21.5" Between the Arms
- Overall 27" Wide
- Springed, 20"D Seat Cushion
- 16.5" Tall Back Cushion
- 48" Front-to-Back Chair Upright
- 70" Front-to-Back Reclined
- 34" Turning Radius (Max. Footprint)

The World-class Ambassador Barber Chair, with premium tufted upholstery and solid oak carved arms, is guaranteed to provide years of comfort and service for about three cents a haircut. The oak lasts (nearly) forever, the durable metal-to-metal construction includes 8 sets of ball-bearings for smooth operation and long-life, and the sealed hydraulic base includes an oversized ultra-thick steel baseplate.



10 Year or 100,000 Haircuts Warranty covers hydraulic base, gas cylinder, and mechanical components; upholstery and the remainder of chair is covered for Three Years. Warranty covers repair-replacement parts, not labor, and does not cover normal wear and tear, nor does it cover damage caused by water or fire, staining, fading, or discoloration of fabrics or finishes, or where there is evidence of tampering, mishandling, abuse, or misuse of the equipment.

B70 Cobalt Omega

The B70 Cobalt Omega chair is a classically-styled barber chair with polished, cast aluminum end caps on the arms, a towel bar on the right side, and a heavy-duty polished steel baseplate. The B70 has a slightly tapered upper back and is one of the two B Series chairs that comes standard *without* the roll-over calf support, but can optionally be equipped with one.



BKB-4100 Electric Base is available as an option on any Collins barber or styling chair!



B20 Cavalier



*The Classic Barbershop
Mixco, Guatemala*

*B Series Barber Chairs
feature an impressive
10 Year Warranty!*



Collins B Series barber chairs all have the same world-class features, listed below left, but each one has its own unique style. The B20, shown above, features solid oak arms with expert detailing, and handsome diamond quilting. The B20 Cavalier comes standard with a chrome heavy-duty baseplate.

B Series Features

- Gas Cylinder Controlled Reclining Back Cushion
- Right and Left Handed Controls for Back Recline
- Adjustable/Removable Push Button Headrest
- Cast Aluminum Footrest Works In-Sync with Back Recline
- Cast Aluminum Footrest and Roll-Over Calf Pad
- Foot-Operated Heavy Duty Hydraulic Base
- 27" diameter, 10 Gauge Steel Baseplate
- Durable Powder Coated, Fabricated Steel Frame
- 8 Sets of Ball-Bearings for Long Life & Smooth Operation
- Steel Reinforced Red Oak, Hard Maple, or Powder Coated Cast Aluminum Arms with Padded Upholstered Rests
- Quilted Upholstery with Premium 36 oz. Expanded Vinyl
- Choose ANY Spirit, Burkshire, or Olympus Upholstery



*Free headrest storage
bracket; installs on
back of cabinet or
closet door.*

B Series Specs

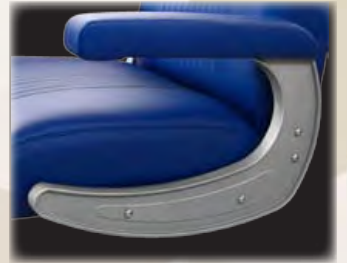
- 21.5" Between the Arms
- Overall 27" Wide
- Springed, 20"D Seat Cushion
- 16.5" Tall Back Cushion
- 48" Front-to-Back Chair Upright
- 70" Front-to-Back Reclined
- 34" Turning Radius (Max. Footprint)

B50 Caliber



The B50 Caliber features masculine geometric arms of cast aluminum and clean vertically stitched upholstery. The B50 arms and heavy-duty baseplate both feature a beautiful powder coated silver vein finish. The Caliber is a great choice for modern styled barber shops.

B40 Cobalt



Collins B40 Cobalt barber chairs feature heavy C-shaped cast aluminum arms with a silver powder-coated finish, padded upholstered armrests, and traditional vertical stitching. The B40 comes standard with a silver, powder coated heavy duty baseplate that matches the arms.

- 863 B10 Commander Premium w/ Maple arms, black logo footrest, and Chrome HD Base
- 864 B20 Cavalier w/ Red Oak Arms & Chrome Heavy Duty Base
- 865 B30 Bristol w/ Silver Arms & Silver Heavy Duty Base
- 866 B40 Cobalt w/ Silver Arms & Silver Heavy Duty Base
- 867 B50 Caliber w/ Silver-Vein Arms & Heavy Duty Silver Vein Base
- 868 B60 Commander Supreme w/ Maple arms, Roll-over Calf Pad, and Chrome HD Base
- 869 B70 Cobalt Omega w/ Silver Arms, Polished Arm Endcaps, Silver HD Base
- 869a B80 Ambassador w/ Red Oak Arms, Premium Button-tufting, and Chrome HD Base



Razors & Blades • Danvers, MA



B30 Bristol



Collins B Series barber chairs all have the same world-class features, listed left, but each one has its own unique style. The B30, shown in both Slate & Chili Pepper, features circular cast-aluminum arms with a stylish horizontal stitched inset in the seat. The B30 comes standard with a powder coated silver heavy-duty baseplate.

US Military Academy at West Point

LaCarte

Mix & Match Solutions



Index #1145



LACARTE CONFIGURATION 68A

6813 barber cabinet, 6811 anchor cabinet with white solid-surface counter and CB80 Bowl, and 6815 towel cabinet. 72\"W x 22\"D x 39\"H. Pictured with 36\" x 72\" mirror, ordered separately.



Index #1146

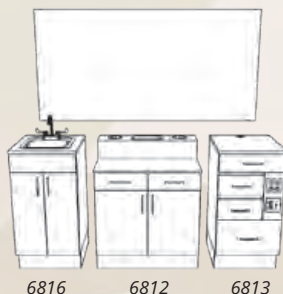
LACARTE CONFIGURATION 68B

6814 Styling Cabinet, 6812 Anchor cabinet with white solid-surface counter, and 6817 Utility cabinet. 72\"W x 22\"D x 39\"H. Pictured with 36\" x 72\" mirror, ordered separately.

Visit our website for additional detail images!
www.CollinsMfgCo.com



Index #1147



LACARTE CONFIGURATION 68C

6813 Barber Cabinet, 6812 Anchor Cabinet w/ white solid-surface counter, & 6816 handwash cabinet. Measures 72\"W x 22\"D x 39\"H. Pictured with 36\" x 72\" mirror, ordered separately.

LaCarte Barber Stations are made to your specifications to meet the needs & demands of your barbershop. Made in the USA, LaCarte Barber Stations promise years of efficient service.

- Anchor Cabinets -



1148 • 6811-32 LACARTE ANCHOR CABINET w/ CB80 Porcelain Shampoo Bowl, white solid-surface counter, stainless bottle well, 2 stainless barbicide holders, & 2 plumbing access doors. Includes CB80 porcelain shampoo bowl w/ all fixtures, choose from black or white. 32\"W x 22\"D x 33\"H x 39\"H

1149 • 6812-32 LACARTE ANCHOR CABINET with two drawers, two doors, white solid-surface counter, stainless bottle well, two stainless barbicide holders. 32\"W x 22\"D x 33\"H x 39\"H

- Add-On Cabinets -

Cabinets listed left to right



1153 • 6816-20 LACARTE HANDWASH CABINET with stainless steel bar sink, gooseneck faucet, paddle handles, and side-by-side doors. 20\"W x 22\"D x 39\"H

1150 • 6813-20 LACARTE BARBER CABINET with two utility drawers, two clipper drawers with UV germicidal lights, three duplex electrical outlets, light switch, and wire grommet. 20\"W x 22\"D x 39\"H

1151 • 6814-20 LACARTE STYLING CABINET with two drawers, fully-equipped tilt-out tool panel, six-outlet power strip, and wire grommet. 20\"W x 22\"D x 39\"H

1155 • 6818-20 LACARTE VACUUM CABINET with full-width drawer, side-by-side cabinet doors concealing a customer-supplied shop vac, vacuum hose grommet on front, duplex electrical, on-off switch for vacuum, wire grommet on work surface. 20\"W x 22\"D x 39\"H



1152 • 6815-20 LACARTE TOWEL CABINET with tilt-out door for clean towels, tilt-out door with bin for soiled towels, and wire grommet. 20\"W x 22\"D x 39\"H

1154 • 6817-20 LACARTE BASIC CABINET with drawer, side-by-side doors, adjustable shelves, and wire grommet. 20\"W x 22\"D x 39\"H

1156 • 6819-20 LACARTE WALL-MOUNTED STORAGE CABINET with side-by-side doors and two adjustable shelves. Measures 20\"W x 10\"D x 22\"H & includes 14\" tall under-cabinet backsplash.

1157 • 6820-20 LACARTE WALL-MOUNTED RETAIL DISPLAY with two glass shelves. Measures 20\"W x 10\"D x 22\"H & includes 14\" tall backsplash.

Quinton

6801-72 + 6802-72



1135 • 6801-72 QUINTON BARBER STATION with white solid-surface counter, two drawers, premium pulls, and fluted molding accented by rosettes. Both sides feature a quad-electrical outlet, two clipper hooks, clipper pocket, barbicide holder, and blow dryer holder. 36" x 72" wall mounted mirror included. 72"W x 21"D x 36"H x 39"H x 75"H

1136 • 6802-72 QUINTON SOFFIT WITH LIGHT Includes continuation of fluted molding, additional rosettes, full-width soffit with T5 lights, wire-chase. Includes 36" x 60" mirror. Overall height with the optional soffit is 81".

1137 • 6803-72 QUINTON BACK-TO-BACK BARBER STATION Two Quinton stations, two Quinton soffits, and two 36" x 60" mirrors. 72"W x 46"D x 81"H

Barber Poles



872 • 2L77

871 • 2L55

870 • 2L405

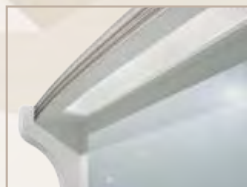


872a • CC14 CLIPPER CORRAL
Tray with four notches for cord management & a removable/washable mat with a grip texture that keeps clippers organized & prevents shifting or sliding. 13"W x 14"D x 2"H

- 870 2L405
- 871 2L55
- 872 2L77
- 878 10729
- 605 1870
- 893 BKB-4100

Small Barber Pole – 6" W x 8"D x 29"H. Glass cylinder 16" tall x 4" dia.
Medium Barber Pole – 9" W x 11"D x 35"H. Glass cylinder 16" tall x 6" dia.
Large Barber Pole – 9" W x 11"D x 39"H. Glass cylinder 20" tall x 6" dia.
Optional Cast Aluminum Logo Footrest
Utility Stool w/ round seat cushion, gas cylinder, casters.
Electric Base w/ 7 1/2" lift, 359° rotation, up-down pedal control, locking brake, chrome baseplate, 400 lb. capacity. Made in Korea. 3 Yr Warranty.

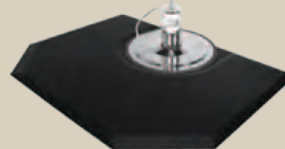
Quincy



B30

6805-72 + 6806-72

902 • XL4860



*Electric Base w/
3 Year Warranty*

Booster Seat



874 • 150



893 • BKB-4100

1139 • 6805-72 QUINCY BARBER STATION with white solid-surface counter, two drawers, premium pulls, and contemporary shaped legs. Both sides feature a quad-electrical outlet, two clipper hooks, clipper pocket, barbicide holder, and blow dryer holder. 36" x 72" wall-mounted mirror is included. 72"W x 21"D x 36"H x 39"H x 75"H

1141 • 6806-72 QUINCY SOFFIT W/ LIGHT Includes continuation of shaped legs, full-width soffit with T5 lights, and wire chase. 36" x 60" mirror included. Overall height with optional soffit is 81".

Barbering



1029 • 6626-66



Frank's Barbershop
University of Tennessee
Knoxville, Tennessee

Comfort Zone Mats p67



869a • B80

B Series Barber Chairs — 10 Year Warranty —



863 • B10



976 • 879-72



975 • 879-62



972 • 878-72

- 1029 6626-66 Edge 66 Barber Station w/ CB19 bowl & framed mirror. 30"W center cabinet w/ bowl, 2 molded bottle wells, & plumbing access doors. Right & left cabinets, both 18"W, each w/ drawers, pull-out tool drawer, lower storage, barbicide holder, blow dryer holder. Left-to-right wire chase provided. Measures 66"W x 21"D x 39". Included framed wall-mounted mirror is 66"W x 42"H.
- 972 878-72 The Classic Barber Station features 2 drawers, 2 storage cabinets, soiled towel drop, quadplex electric, soiled towel drop, & plumbing access doors. Includes CB80 porcelain bowl & pictured 36" x 72" mirror. 72"W x 18"D x 36"H
- 976 879-72 The Bradford Dential Barber Station is a traditionally styled station accented w/ real wood custom crown & dential molding. The Bradford measures 72"W x 18"D x 90"H & comes w/ a CB80 porcelain bowl w/ fixtures and a framed mirror.
- 975 879-62 Bradford Barber Styling Station w/ full width framed mirror & real wood crown, base, & accent moldings. This traditionally styled styling station features a breadboard pull-out, a shear drawer plus 5 additional drawers, 3 storage cabinets, & tip-out tool panel. 61.5"W x 18"D x 42"H.

Collins Equipment is Proudly Made in the USA!



1011 • 5501-66



1142 • 6807-60 +
1143 • 6808-60



1012 • 5575-72

- | | | |
|------|---------|---|
| 1011 | 5501-66 | QSE Traditional Barber Station features two full extension drawers, two storage cabinets with shelves, two clipper pockets, blow dryer holder, plumbing access doors. Unit measures 66"W x 16"D x 39"H and includes CB19 Bowl, fixtures, vacuum breaker, and pictured 36" x 66" mirror. |
| 1012 | 5575-72 | Brentwood Barber Station w/ CB80 Porcelain Shampoo Bowl includes center cabinet w/ bottle well & plumbing access, right and left cabinets, cast-aluminum legs, full-extension drawer, storage, right & left retail displays, overhead storage w/ sliding doors, and tool panel w/ quad electric on your choice of side. 72"W x 23"D x 88"H. |
| 1142 | 6807-60 | Briggs Barber Station with two drawers, quad-electrical outlet, blow dryer holder, barbicide holder, clipper pocket, and two clipper hooks. 60"W x 21"D x 36"H x 39"H. 36" x 60" wall-mounted mirror included. |
| 1143 | 6808-60 | Briggs Wall-Mounted Soffit with T5 Light. Installs on the wall above mirror with wiring and in-the-wall light switch by customer. Soffit measures 60"W x 13"D x 5.25"H. |
| 1144 | 6809-60 | Briggs Back-to-Back Barber Station - Two Briggs stations, two soffits, two mirrors, and interior upper-support wall. 60"W x 46"D x 81"H 5"H Not pictured. |
| 860 | 9040BX2 | Twin Bradford Shoe shine stand is perfect for larger sized, upscale men's salons. 78"W x 47"D x 54"H |
| 859 | 9040B | Single Bradford Shoe shine stand. 48"W x 47"D x 54"H |
| 858 | 9040 | Continental shoe shine stand features a comfortable 24"W Continental chair, two locking drawers, and cast aluminum foot supports. Shown with customer-requested diamond quilting in photo; standard upholstery stitching shown on 9040BX2. 42"W x 45"D x 60"H |



*Uncle Classic
Nashville, Tennessee*

*Contact Collins about
Custom Shoeshine Stands!*



*Turefitt & Hill
Baku, Azerbaijan*



858 • 9040



860 • 9040BX2

Foot supports can be removed for safer and easier entry/exit, and also for safe storage.

Shoe shine stands can be ordered w/ optional lumbar heat & three-zone massage feature.

Porcelain Bowls

2 Year Warranty on all Collins Porcelain Shampoo Bowls



Collins Shampoo Bowls
are UPC Certified



Just 22"
Front-to-Back!
Perfect for
stylists with a
shorter reach!



921 • CB87

Collins Large Tilting Backwash Porcelain Bowl
Includes 570 single-handle faucet, spray hose, vacuum breaker, drain assembly, hair strainer, and flexible tail-stock. Reliable tilt mechanism that lets bowl tilt a full 6". Available in Black and White. UPC certified. Complies w/ ASME A112.19.12 & CSA B45.1. 21"W x 24.5"D x 10"H

920 • CB86

Collins Tilting Backwash Porcelain Bowl
Includes 570 single-handle faucet, spray hose, vacuum breaker, drain assembly, hair strainer, and flexible tail-stock. Reliable tilt mechanism that lets bowl tilt a full 6". Available in Black & White. UPC certified. Complies w/ ASME A112.19.12 & CSA B45.1. 20"W x 22"D x 11"H

917 • CB80

Collins Square Wall-Mount Porcelain Bowl
Includes 570 single-handle faucet, spray hose, vacuum breaker, drain assembly, hair strainer, and flexible tail-stock. Available in Black and White. UPC certified. Complies with ASME A112.19.12 & CSA B45.1. 21"W x 24"D x 11"H



919 • CB82

Collins Round Tilting Porcelain Shampoo Bowl
Includes 570 single handle faucet, spray hose, vacuum breaker, drain assembly, hair strainer, and flexible tail-stock. Good for backwash or sidewash. Reliable tilt mechanism lets bowl tilt. The CB82 can also be non-tilting if preferred. UPC certified. Complies w/ ASME A112.19.12 & CSA B45.1. 23 1/2" W x 21 1/2"D x 9"H



918 • CB81

Collins Heart-Shaped Porcelain Shampoo Bowl
Includes bowl w/ 570 single handle faucet, spray hose, vacuum breaker, drain assembly, hair strainer, & mounting bracket. Traditional side-wash bowl. Available in Black and White. UPC certified. Complies w/ ASME A112.19.12 & CSA B45.1. 23"W x 20"D x 10"H

Options



925 • T100 Tilting-Sink Addition with CB87
Tilting Porcelain Bowl, faucet, vacuum breaker, & all needed accessories. Ordered as an option on any Collins wet station.



Shown:
5515-48 + T100



Shown:
4420-60 + K100



924 • K100 Adjust-A-Sink Shampoo System
w/cultured marble 3000W shampoo bowl & accessories. Bowl height can be adjusted from 34" to 46"; works with any Collins wet station.

ABS Bowls

Collins Shampoo
Bowls are
UPC Certified



914 • CB19

Collins Traditional ABS Plastic Shampoo Bowl
Includes 532 metal single-handle faucet, spray hose, vacuum breaker, drain assembly, hair strainer, mounting bracket. Traditional sidewash bowl. Black Only. UPC certified, compliant w/ CSA B45.5 & IAPMO Z124. 19"W x 19 1/2"D x 10"H



915 • CB20

Collins Heart-Shaped ABS Plastic Shampoo Bowl
Includes 532 metal single-handle faucet, spray hose, vacuum breaker, drain assembly, hair strainer, mounting bracket. Traditional sidewash bowl. Black Only. UPC certified, compliant w/ CSA B45.5 & IAPMO Z124. 20"W x 19 1/2"D x 10"H



916 • CB23

Collins Oversized ABS Plastic Shampoo Bowl
Includes 532 metal single-handle faucet, spray hose, vacuum breaker, drain assembly, hair strainer, mounting bracket. Traditional sidewash bowl. Black Only. UPC certified, compliant w/ CSA B45.5 & IAPMO Z124. 23"W x 20"D x 11"H

**Collins ABS Shampoo
Bowls are guaranteed an
INDUSTRY-BEST 5 YEARS
from date of purchase!**



Faucets & Accessories



932 • 570

Meets ASME A112.18.1
& CSA B125.1. UPC &
UPC Canada approved.



940 • 400



941 • 800



Meets ASME A112.18.1
& CSA B125.1. UPC &
UPC Canada approved.



929 • 552

Meets ASME A112.18.1
& CSA B125.1. UPC &
UPC Canada approved.



927 • 532

Meets ASME A112.18.1
& CSA B125.1. UPC &
UPC Canada approved.



**2 Year Warranty
on all Collins &
Jeffco Faucets**



933 • 388-ASC

Meets* ASSE 1001 & CSA
B64.1.1; IAPMO listed.



934 • 388-VB

Meets* ASSE 1001 & CSA
B64.1.1; IAPMO listed.



926 • CB99



938 • HT-1



942 • 1701

Meets IGC 167-2011ae2,
ASME A112.18.2 and
CSA B125.2.



936 • 572



939 • SB-1



931 • 563

- 926 CB99
- 927 532
- 928 532-BVD
- 929 552
- 930 561
- 931 563
- 932 570
- 933 388-ASC
- 934 388-VB

- 935 6600NR
- 936 572
- 937 662S

- 938 HT-1
- 939 SB-1
- 940 400
- 941 800
- 942 1701
- 943 20101
- 944 20129

Collins Easy-Clean Premium Hair Trap, use in lieu of ordinary P trap.
Collins Low-Profile Single-Handle Faucet w/ metal handle, fits most bowls
Order Collins 532-BVD for perfect-fit on Belvedere cast iron bowls.
Jeffco Single Handle Faucet w/ Acrylic Knob, fits most bowls.
Jeffco 48" Shampoo Spray Hose w/ donut keeper, fits most bowls.
Jeffco Universal Hose Receiver Plate w/ plate retainer & gasket, fits most bowls.
Jeffco Single-Handle Faucet w/ metal handle, fits most bowls.
Jeffco Vacuum Breaker w/ brass nipples & connecting hose. Fits most bowls.
Jeffco Complete Vacuum Breaker Kit, includes breaker, nipples, hose, receiver plate, and gaskets. Fits most bowls.
Jeffco Universal Gel Neckrest, fits most bowls
Jeffco 3 1/2" Premium Strainer Basket Assembly, fits most bowls
Heavy-Duty 3 1/2" Strainer Basket Assembly w/ center tightening bolt, recommended for tilting bowls, standard with Jeffco-Collins tilting bowls
Jeffco Quick Clean Hair Trap, clear plastic, use in lieu of ordinary P trap.
Jeffco Hair Strainer, resilient molded plastic, fits most strainer baskets
Diverter Spout, fits most bowl
Premium Faucet w/ Built-In Spray Hose & Vacuum Breaker, fits most bowls
Large Hair Trap, gray plastic
Shampoo Bowl Tilt-Mechanism, 8" diameter. Fits CB82, CB86, CB87 bowls & others.
Flexible Drain Line for Tilting Bowls, 18" long, fits most bowl

TempTura Ultra Dryers Portable & Wall-Mount



Hair Net Not Needed!

904 • 1433H

Collins Wall-Mounted TempTura Ultra Dryer
Wall-Mounted version has a well engineered articulating arm. Arm measures 35" from wall to elbow, plus 29" from elbow to dryer. Provides 5' 4" diameter semi-circle shaped working range from mounting bracket. Unit installs 78" above finished floor. In-wall backing or overlay panel required.



903 • 1433S

Collins Portable TempTura Ultra Dryer
Premium down-draft dryer w/ smoked hood, variable time & temperature settings, and cool-down cycle. Oversized spherical smoked hood measures 12 1/2" inside diameter, 17 1/2" diameter at largest point.



Micro-Mist Steamer

909 • 1496S

Collins' Micro-Mist Premium Steamer features anion negative ion function, 5 temperature levels, digital timer, Push Button control panel, easily programmable or use the pre-programmed treatment cycles. Oversized tilting hood measures 12" diameter, 10" deep. 8.5' power cord. 110 volts, 1300 watts. Carries European mark of compliance.



The portable stand features an easily adjustable height & an oversized non-tipping base w/ premium large casters.



Spa & Salon at River Valley Club
Lebanon, NH

Custom Dryer Banquettes



Reference 102054.2



Reference 121349.2983



Reference 129760

Contact your distributor to discuss custom equipment made by Collins!

Galaxy Processors



905 • 1464S **906 • 1464H**
Features infrared heating technology to help color and chemical treatments penetrate deeper & faster with enhanced results. Automatic heat sensor w/ continuous adj., temperature level indicator light, automatic 2 minute cool-down cycle, easy-to-use push button control panel, easily programmable plus 5 preset programs for color processing, perms, & drying. 110 volts, 1300 watts. Carries European mark of compliance. **CE**

The 1464S portable model features an oversized non-tipping base with premium large casters, easily adjustable height, & 8' power cord.

The 1464H wall-mounted model features a well-engineered articulating arm & 7' power cord. Arm measures 35" from wall to elbow & 29" from elbow to dryer. The wall-mount provides a 5' diameter semi-circular shaped working range from the mounting bracket. Mount is designed to be 78" from the floor.

Nova Processor



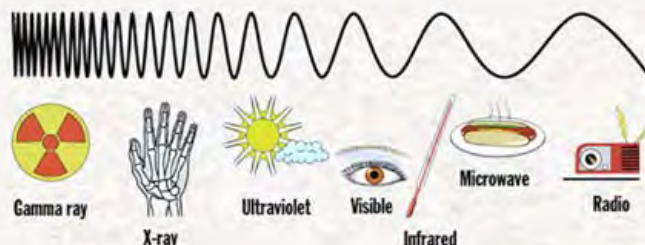
1472S • 1472S
Multi-Function Processor-Dryer with pre-programmed modes: Perm, Color, SemiColor, Meche, & Dry, plus manually selected settings. Easy-to-use digital control panel, optional fan, & automatic cool-down cycle. Portable stand features an oversized non-tipping base on premium large casters, easily adjustable height, & 8' power cord. 110 volts, 1000 watts. Carries European mark of compliance. **CE**



Quantum Processor

908 • 1487S
Features infrared heating technology to help color & chemical treatments penetrate deeper & faster with enhanced results. Automatic heat sensor & continuous adjustment, temperature level indicator light, automatic 2 minute cool-down cycle, easy-to-use push button control panel, easily programmable plus 5 preset programs for color processing, perms, & drying. 110 volts, 1300 watts. Carries European mark of compliance. **CE**

Far Infrared Technology



Far Infrared Technology means the processor uses the longer light wavelengths to penetrate directly into the cortex of hair cuticles, heating from the inside out. Water droplets on the surface of the hair are fragmented into smaller droplets, allowing the hair to better absorb the moisture. Far Infrared Technology results in treatments that process deeper, faster, and with better results.



910 • 2200 SolAir Ionic Dryer by Collins
Premium down-draft dryer w/ smoked hood, ionic option, digital time & temperature settings. Oversized spherical smoked hood measures 15" diameter at widest width. 110 volts, 1000 watts.



**5 Year Warranty
on Collins
SolAir Dryers!**



**2 Year Warranty
on Apollo Dryers!**

911 • K500 Jeffco Apollo Dryer
Down-draft dryer w/ smoked hood, digital time & temperature settings. Oversized spherical smoked hood measures 15" diameter at widest width. 110 volts, 1000 watts.



SolAir & Apollo dryers feature touch-pad, digital controls! SolAir also features ion generator.



Both dryers have a removable filter w/ built-in frame.

Nearly all Collins chairs are available as dryer chairs with a SolAir or Apollo dryer. See chair family listing for more information on the dryer chair.



663 • 5220D



740 • 7120D



**912 • WA-300
Wheel & Handle Kit**
Kit includes large rubber wheels and handle. Fits both Collins SolAir & Jeffco Apollo dryers.

The wheel kit raises the dryer 7 3/8" from the floor.



Collins' SolAir dryer with ionic technology generates millions of negative ions, which neutralize positive ions & break down the water molecule. In turn, this process reduces the amount of time to dry hair, seals the hair cuticle, reduces frizziness, & leaves hair shinier.

Simulator



894 • S02

A Collins Exclusive! The Simulator enables a student to work on mannequin heads in the exact same position and attitude as real customers, making it easier to learn how to shampoo, work out of a mirror, and use the chair in relation to the customer. The Simulator attaches to the chair like a headrest and can be added to existing hydraulic & shampoo chairs.

*Improved
Design!*



310 Trolley

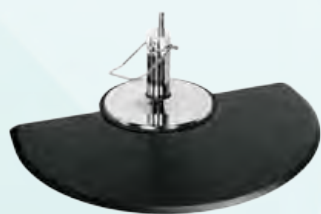


913 • 310

This portable Trolley has it all! Locking metal door secures five removable drawers, each of which is 8.5" x 13" x 3.25", plus easy-rolling, soft acrylic casters. The top accommodates blow dryer, curling irons, color bowl, plus hot tools won't damage the removable hot top. Now with an exterior wire basket for additional storage! 35"H x 12"W x 16"D 21" wide with both side-ledges fully extended.

Comfort Zone Mats

Exclusively from Collins



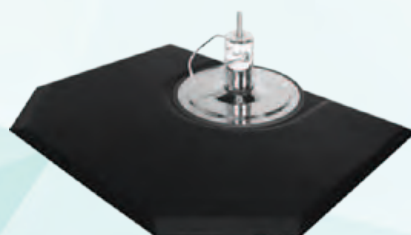
897 • HR3660



899 • RT3660



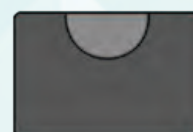
901 • SQ3654



902 • XL4860



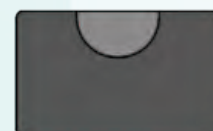
896 • HR3654
36" x 54" x 3/4"



898 • RT3654
36" x 54" x 3/4"



899 • HR3660
36" x 60" x 3/4"



899 • RT3660
36" x 60" x 3/4"



902 • XL4860
Oversized 48" x 60" x 3/4"



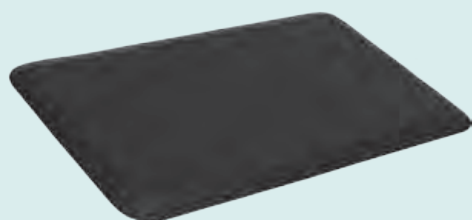
901 • SQ3654
For Square Base
36" x 54" x 3/4"

Comfort Zone Benefits

- Reduces Stress/Strain on Back, Knees, Feet
- Reduces Fatigue & Fatigue-Related Errors
- Provides Preventive Anti-Pain Therapy
- Recommended by Professionals
- Time-tested design, Made in America
- Durable, Stable, Puncture-Resistant
- Guaranteed Not to Delaminate
- Guaranteed Not to Wear Through
- Molded Design Prevents Edge Curl
- High Heels Will Not Puncture

Comfort Zone Mats are warranted to the original purchaser for five (5) years from the original date of shipment from the factory. Mats are guaranteed against wear-through of the top-elastomer and separation of top-elastomer surface from the urethane core.

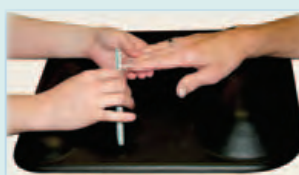
Shampoo Mat



900 • RT1830
Rectangular Salon Mat, 18" x 30" x 3/4"
Sized for shampoo station or receptionist

Comfort Zone

for Nails



1104 • CZ1 Comfort Zone for Nails
14" x 15" x 7/8" x 1 7/8"
Molded urethane mat, Black only



Laminate Selections

Collins Mosaic and Made-to-Order equipment can be ordered in any of 50+ laminate colors at no additional cost. These printed selections are a good representation of the variety of choices available from Collins but printed colors are rarely 100% accurate. Contact your distributor for an actual sample when absolute color match is necessary.



7966K-12
5th Ave Elm



8839
Ashen Ribbonwood



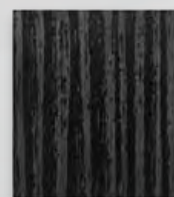
7949K-18
Asian Night



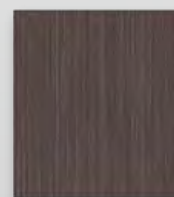
4940K-18
Astro Strandz



4926K-07
Black Alicante



1595-28
Black Gloss Line



6414-NG
Black Riftwood



7983-38
Boardwalk Oak



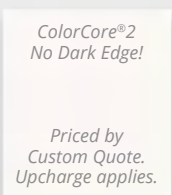
8207K-16
Branded Oak



6307-58
Burnt Strand



4925K-07
Calcutta Marble



ColorCore®2
No Dark Edge!

Priced by
Custom Quote.
Upcharge applies.

949CC-58
White ColorCore®2



6449-58
Charcoal Duotex



5884-58
Chestnut Woodline



7739-58
Cocoa Maple



8828-58
Earthen Twill



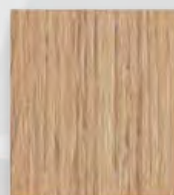
9012-NT
Ebony



873-58
Ebony Ribbonwood



4962-38
Gesso Tracery



5887-NT
Millennium Oak



863-58
Myriad Ribbonwood



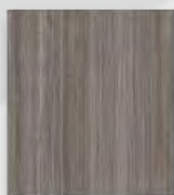
7500-58
Noir Envision



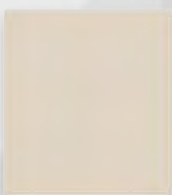
5481-43
Oiled Olivewood



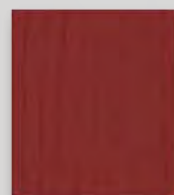
902-58
Platinum



8210K-28
Portico Teak



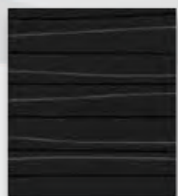
858-58
Pumice



7979K-12
Red Barn



4830-07
Satin Stainless



909-SP
Sculpted Black



927-SP
Sculpted Folkstone



949-SP
Sculpted White



7759-43
Select Cherry



D91-60
Slate Grey



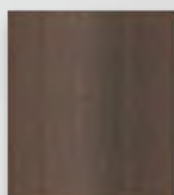
5488-NT
Smoky Brown Pear



839-58
Stop Red



9283-NG
Walnut Riftwood



7969K-12
Warehouse Oak



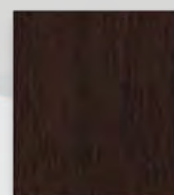
6410-NG
Weathered Beamwood



6306-58
Wenge Strand



7976-K12
White Cypress



WX421-H
Witchcraft



7957K-78
Zanzibar



QSE 7922-07
Brighton Walnut



QSE 7933-07
Cafelle



QSE 7909-60
Fusion Maple



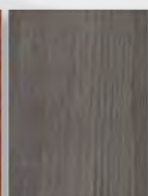
QSE 4623-60
Graphite Nebula



QSE 909-58
Matte Black



QSE WC521
Shaker Cherry



QSE 7995-38
Sterling Ash



QSE 949-58
White



QSE 9285-58
White Twill



QSE 7054-60
Wild Cherry

Vinyl Selections

Collins Mosaic and Made-to-Order equipment can be ordered in any of the 100+ vinyl colors below at no additional cost. These printed selections are a good representation of the variety of choices available from Collins but printed colors are rarely 100% accurate. Contact your distributor for an actual sample when absolute color match is necessary.

									
US 322 Sun Yellow	US 504 Rosealee	US 503 Pink	US 515 Bristol Blue	US 517 Fjord Blue	US 513 Surf	US 501 <i>Discontinued</i>	US 502 Coral Sand	US 500 Ivory	US 394 Adobe White
									
US 524 Golden Corn	US 358 Tomato	US 415 Mauve	US 518 Dutch Blue	US 526 Sage	US 417 Dusty Jade	US 401 Vicuna	US 402 Shell	US 385 Parchment	US 396 Alabaster
									
US 324 Goldenrod	US 372 Mandarin Orange	US 416 Tea Rose	US 414 Wedgewood	US 527 Artichoke	US 528 Northwoods	US 519 Doe	US 406 Peach	US 404 Bone	US 410 Taupe
									
US 434 China Green	US 343 Emerald	US 505 Rouge Red	US 353 Space Blue	US 529 Olive Green	US 508 Lilac	US 387 Camel	US 412 Rose	US 409 Bisque	US 403 Putty
									
US 522 Rustic Brown	US 512 Dark Purple	US 507 Dark Cherry	US 514 Capri Blue	US 530 Alpine	US 509 Grape	US 421 Oak	US 521 Sunset	US 424 Dewberry	US 525 Gray Moss
									
US 383 Espresso	US 393 Black	US 510 Concord	US 516 Sky Blue	US 344 Forest	US 506 Sangria	US 376 Terra Cotta	US 520 Cinnabar	US 423 Woodrose	US 425 Greystone
									
US 375 Chestnut	US 381 Mocha	US 523 Bronze	US 432 Imperial Blue	US 350 Yew Green	US 361 Plum	OLY380 Breeze	OLY150 Raspberry	OLY130 American Beauty	OLY350 Orange Blast
									
OLY265 Bittersweet	OLY115 Black	OLY235 Gunmetal	OLY185 Slate	OLY110 Cadet	OLY120 Dove	OLY385 Canvas	OLY330 Red Berry	OLY335 Chili Pepper	OLY195 New Burgundy
									
OLY325 Aubergine	OLY365 Purple Velvet	OLY285 Majestic	OLY160 Regimental Blue	OLY205 Graphite	OLY125 Blue Ridge	OLY170 White	OLY140 Cordovan	OLY105 Burgundy	OLY230 Claret
									
OLY310 Honeydew	OLY145 Deep Violet	OLY190 Royal	OLY290 Lake	OLY295 Ice Blue	OLY300 Tahiti	OLY180 Sand	OLY225 Paprika	OLY320 Pumpkin	OLY220 Gingersnap
									
OLY250 Basil	OLY305 Leaf	OLY200 Crocus	OLY345 Cornsilk	OLY340 Cork	OLY165 Lt. Gray	OLY275 Oat	OLY260 Java	OLY215 British Tan	OLY255 Earth
									
OLY155 Hunter	OLY175 Grotto	OLY375 Tropic	OLY315 Sundance	OLY245 Desert	OLY280 Suede	Wallaby Camel	QSE Wallaby Black	QSE Wallaby Chocolate	QSE Wallaby Charcoal
									
OLY355 Pine Needle	OLY135 Turquoise	OLY370 Spa	OLY270 Desert Tan	OLY210 Cinnamon	OLY240 River Rock	Wallaby Pearl	77552 Matrix White	QSE Wallaby Grey	QSE Wallaby Scarlet



collins

Collins Manufacturing Co.
PO Box 2279 • Cookeville, TN 38502
CollinsMfgCo.com • 800-292-6450